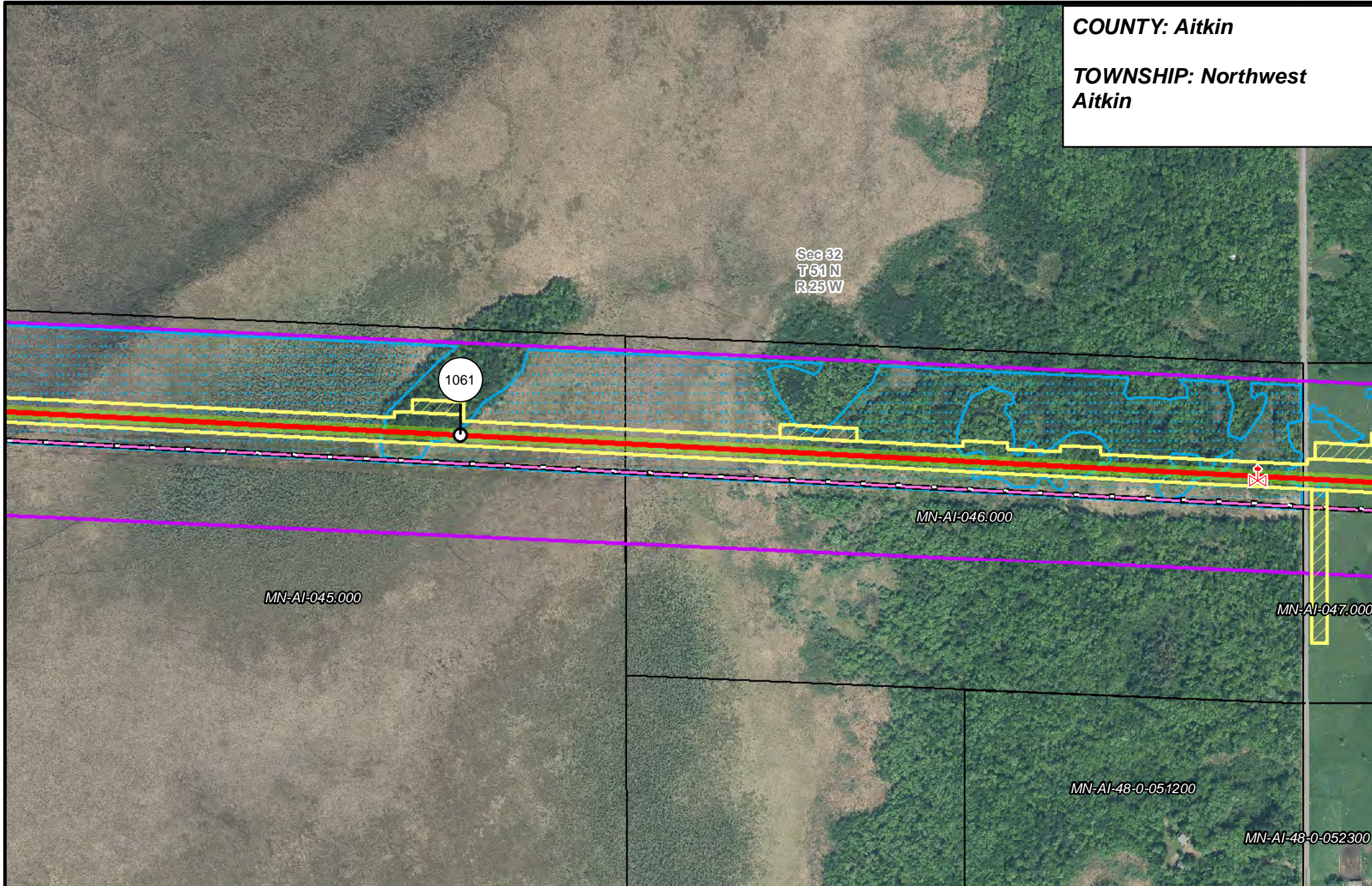
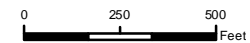


COUNTY: Aitkin
TOWNSHIP: Northwest Aitkin

Sec 32
 T51 N
 R25 W



- | | | | |
|-----------------------|--------------------------------|----------------------|------------------------|
| PUC Designated Route | Mile Post | Surveyed Waterbodies | Tract Boundary |
| ROW | Temporary Workspace | ESA | MN Section Boundary |
| Line 3R Pipeline | Additional Temporary Workspace | Surveyed Wetlands | Township/City Boundary |
| Valve Location | Existing Enbridge Pipelines | NWI Wetlands | County Boundary |
| Enbridge Pump Station | Existing Electric Transmission | | |
| | Existing Third Party Pipelines | | |



LINE 3 REPLACEMENT PIPELINE ROUTE

DRAWN: MLB CHECKED: ...
 DATE: August 31, 2018 SCALE: 1:5,000
 Map 309 of 378

COUNTY: Aitkin
TOWNSHIP: Northwest Aitkin

Sec 33
 T51 N
 R25 W

1062

MN-AI-051.000

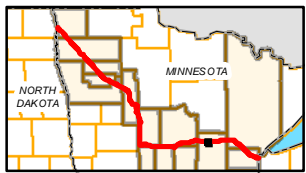
MN-AI-047.000

MN-AI-049.000

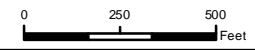
MN-AI-048.000

MN-AI-050.000

MN-AI-48-0-052300



- PUC Designated Route
- ROW
- Line 3R Pipeline
- Valve Location
- Enbridge Pump Station
- Mile Post
- Temporary Workspace
- Additional Temporary Workspace
- Existing Enbridge Pipelines
- Existing Electric Transmission
- Existing Third Party Pipelines
- Surveyed Waterbodies
- ESA
- Surveyed Wetlands
- NWI Wetlands
- Tract Boundary
- MN Section Boundary
- Township/City Boundary
- County Boundary



LINE 3 REPLACEMENT PIPELINE ROUTE

DRAWN: MLB CHECKED: ...
 DATE: August 31, 2018 SCALE: 1:5,000
 Map 310 of 378

COUNTY: Aitkin
TOWNSHIP: Northwest Aitkin

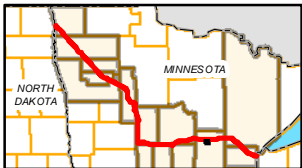
Sec 34
 T51 N
 R25 W

1063

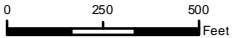
MN-AI-051.000

MN-AI-052.000

MN-AI-052.002



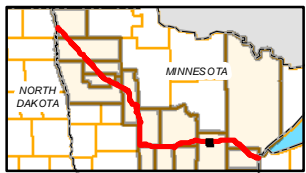
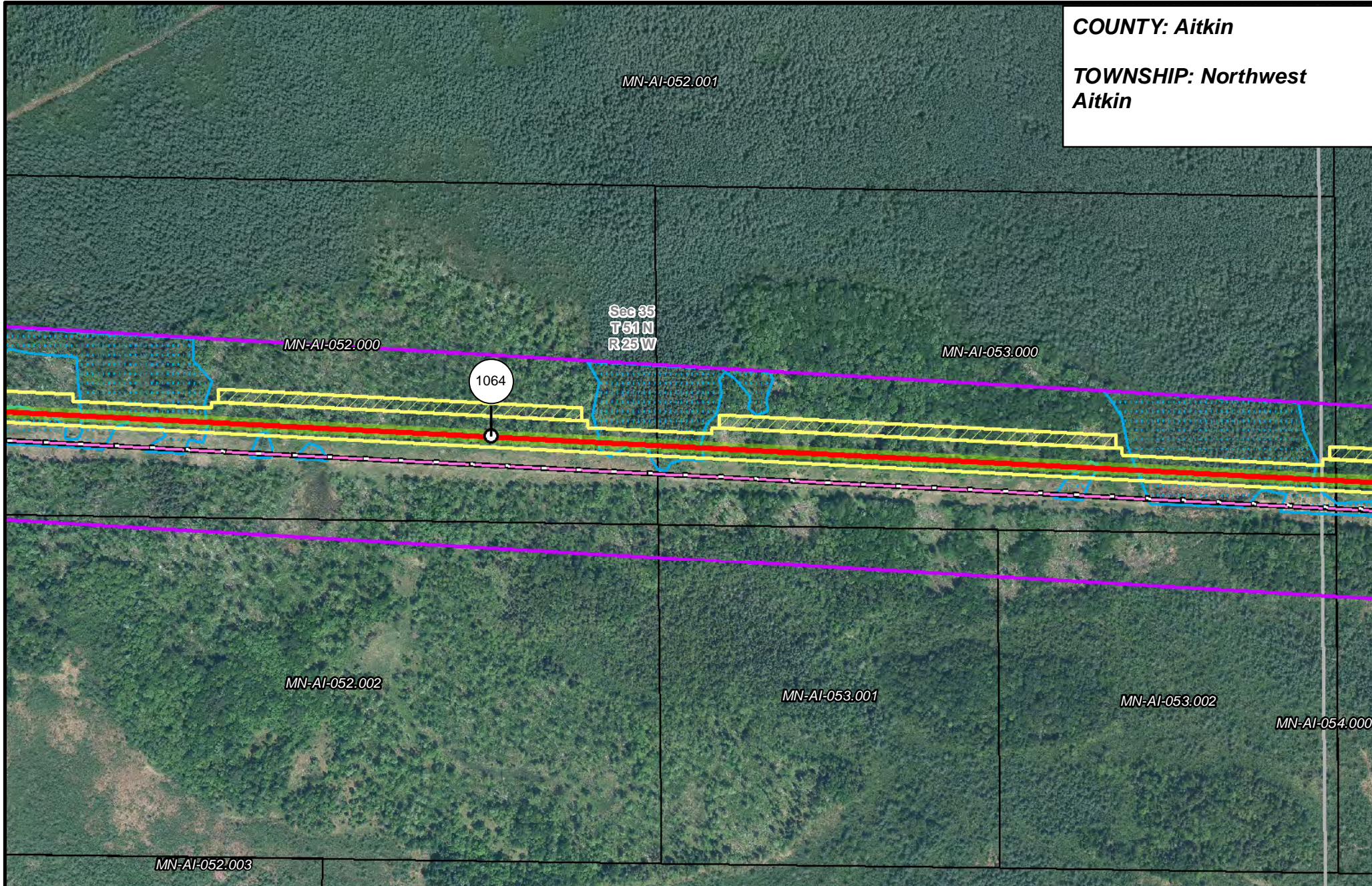
- | | | | |
|-----------------------|--------------------------------|----------------------|------------------------|
| PUC Designated Route | Mile Post | Surveyed Waterbodies | Tract Boundary |
| ROW | Temporary Workspace | ESA | MN Section Boundary |
| Line 3R Pipeline | Additional Temporary Workspace | Surveyed Wetlands | Township/City Boundary |
| Valve Location | Existing Enbridge Pipelines | NWI Wetlands | County Boundary |
| Enbridge Pump Station | Existing Electric Transmission | | |
| | Existing Third Party Pipelines | | |



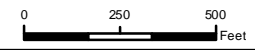
LINE 3 REPLACEMENT PIPELINE ROUTE

DRAWN: MLB CHECKED: ...
 DATE: August 31, 2018 SCALE: 1:5,000
 Map 311 of 378

COUNTY: Aitkin
TOWNSHIP: Northwest Aitkin



- | | | | |
|-----------------------|--------------------------------|----------------------|------------------------|
| PUC Designated Route | Mile Post | Surveyed Waterbodies | Tract Boundary |
| ROW | Temporary Workspace | ESA | MN Section Boundary |
| Line 3R Pipeline | Additional Temporary Workspace | Surveyed Wetlands | Township/City Boundary |
| Valve Location | Existing Enbridge Pipelines | NWI Wetlands | County Boundary |
| Enbridge Pump Station | Existing Electric Transmission | | |
| | Existing Third Party Pipelines | | |



LINE 3 REPLACEMENT PIPELINE ROUTE

DRAWN: MLB CHECKED: ...
 DATE: August 31, 2018 SCALE: 1:5,000
 Map 312 of 378

COUNTY: Aitkin
TOWNSHIP: Northwest
 Aitkin & Verdon

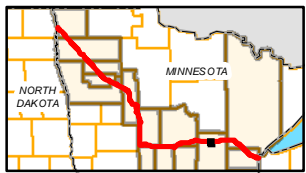
Sec 36
 T51N
 R25W

MN-AI-055.000

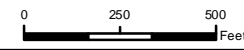
1065

MN-AI-054.000

Sec 1
 T50N R25W



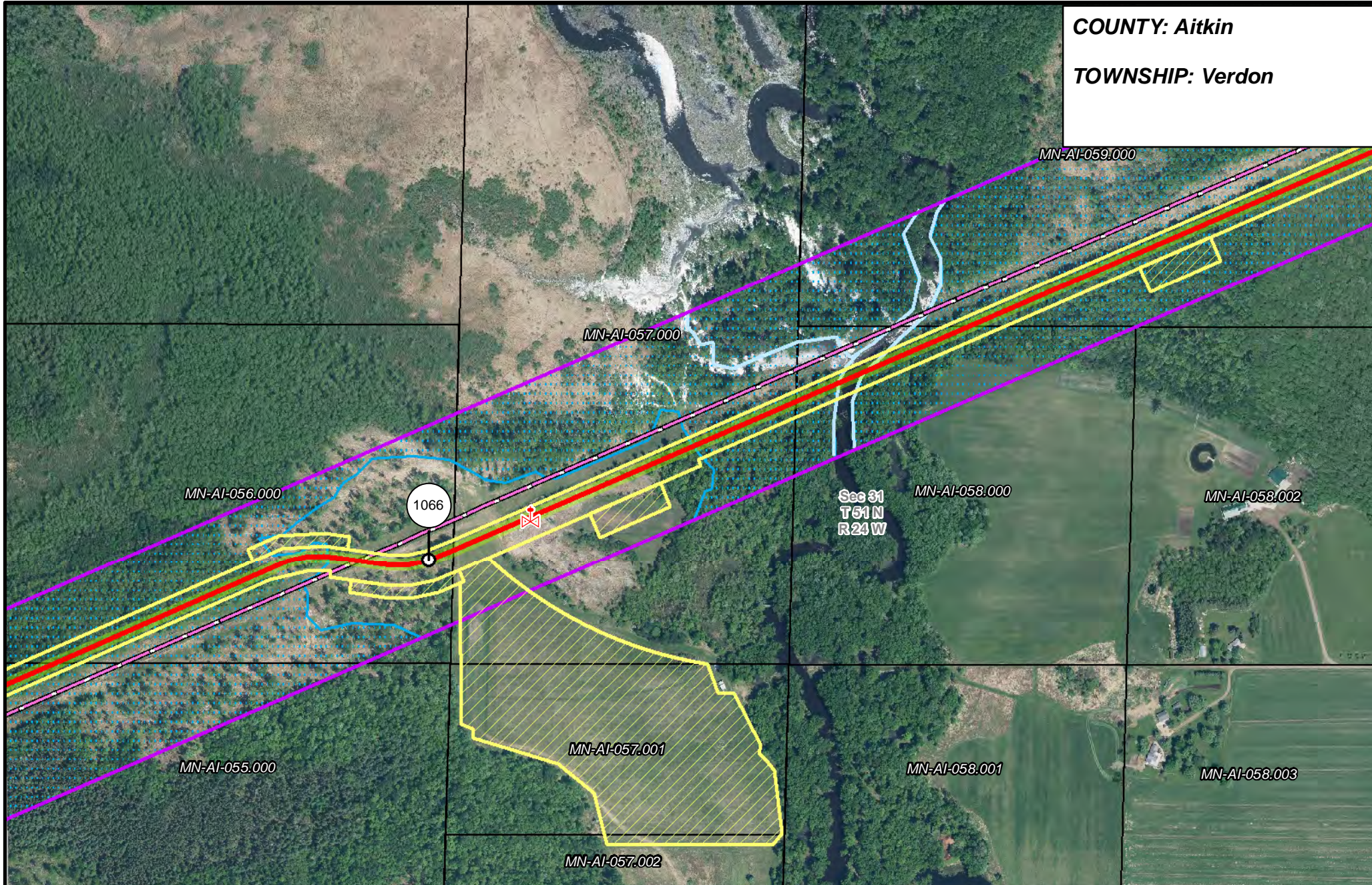
- PUC Designated Route
- ROW
- Line 3R Pipeline
- Valve Location
- Enbridge Pump Station
- Mile Post
- Temporary Workspace
- Additional Temporary Workspace
- Existing Enbridge Pipelines
- Existing Electric Transmission
- Existing Third Party Pipelines
- Surveyed Waterbodies
- ESA
- Surveyed Wetlands
- NWI Wetlands
- Tract Boundary
- MN Section Boundary
- Township/City Boundary
- County Boundary



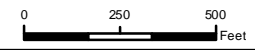
**LINE 3 REPLACEMENT
 PIPELINE ROUTE**

DRAWN: MLB CHECKED: ...
 DATE: August 31, 2018 SCALE: 1:5,000
 Map 313 of 378

COUNTY: Aitkin
TOWNSHIP: Verdon



- | | | | |
|-----------------------|--------------------------------|----------------------|------------------------|
| PUC Designated Route | Mile Post | Surveyed Waterbodies | Tract Boundary |
| ROW | Temporary Workspace | ESA | MN Section Boundary |
| Line 3R Pipeline | Additional Temporary Workspace | Surveyed Wetlands | Township/City Boundary |
| Valve Location | Existing Enbridge Pipelines | NWI Wetlands | County Boundary |
| Enbridge Pump Station | Existing Electric Transmission | | |
| | Existing Third Party Pipelines | | |

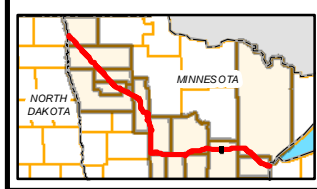
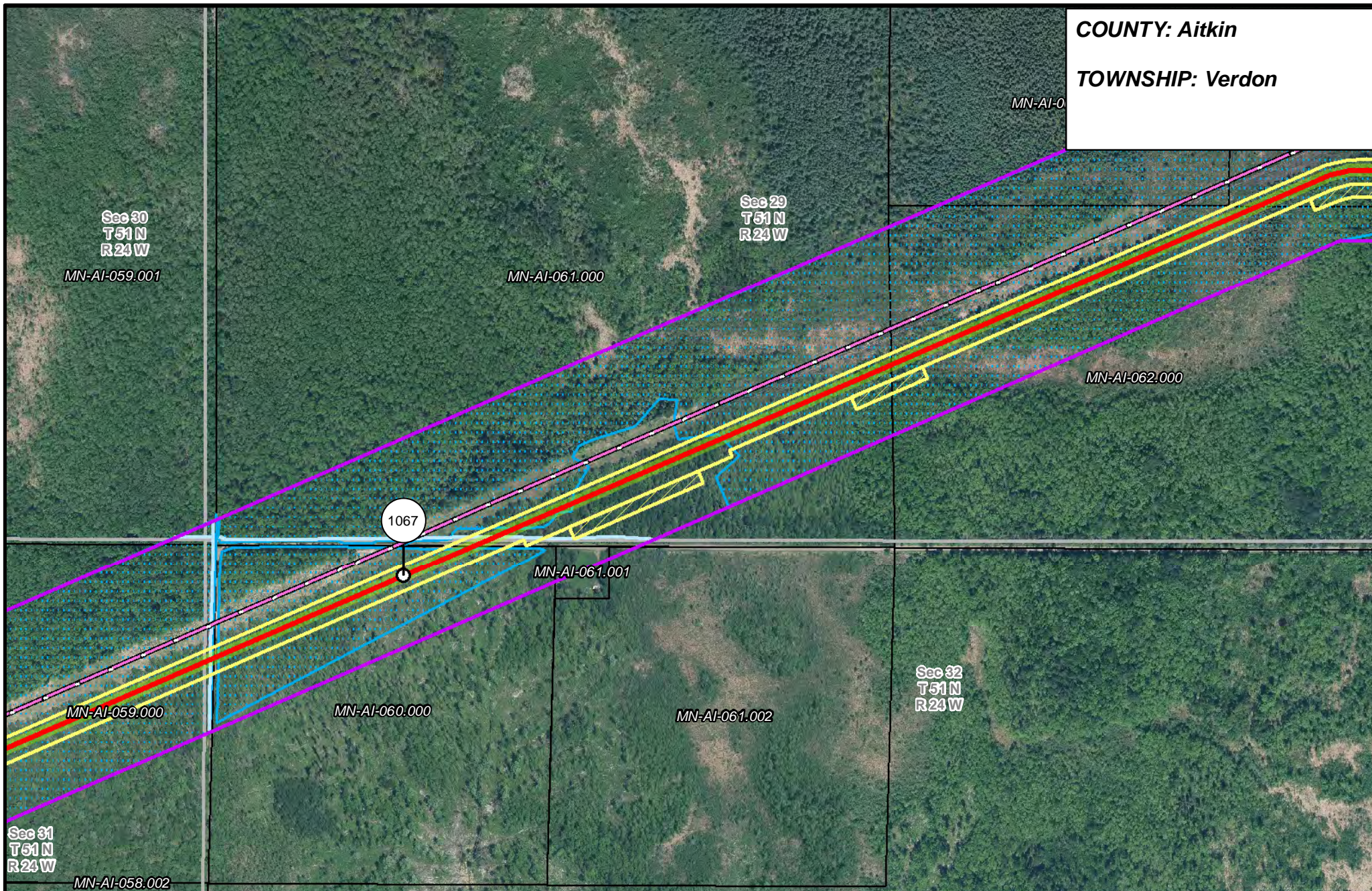


LINE 3 REPLACEMENT PIPELINE ROUTE

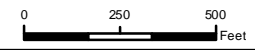
DRAWN: MLB CHECKED: ---
 DATE: August 31, 2018 SCALE: 1:5,000

Map 314 of 378

COUNTY: Aitkin
TOWNSHIP: Verdon



- | | | | |
|-----------------------|--------------------------------|--------------------------------|------------------------|
| PUC Designated Route | Mile Post | Surveyed Waterbodies | Tract Boundary |
| ROW | Temporary Workspace | ESA | MN Section Boundary |
| Line 3R Pipeline | Additional Temporary Workspace | Surveyed Wetlands | Township/City Boundary |
| Valve Location | Existing Enbridge Pipelines | NWI Wetlands | County Boundary |
| Enbridge Pump Station | Existing Electric Transmission | Existing Third Party Pipelines | |

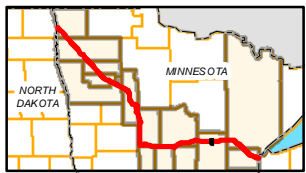
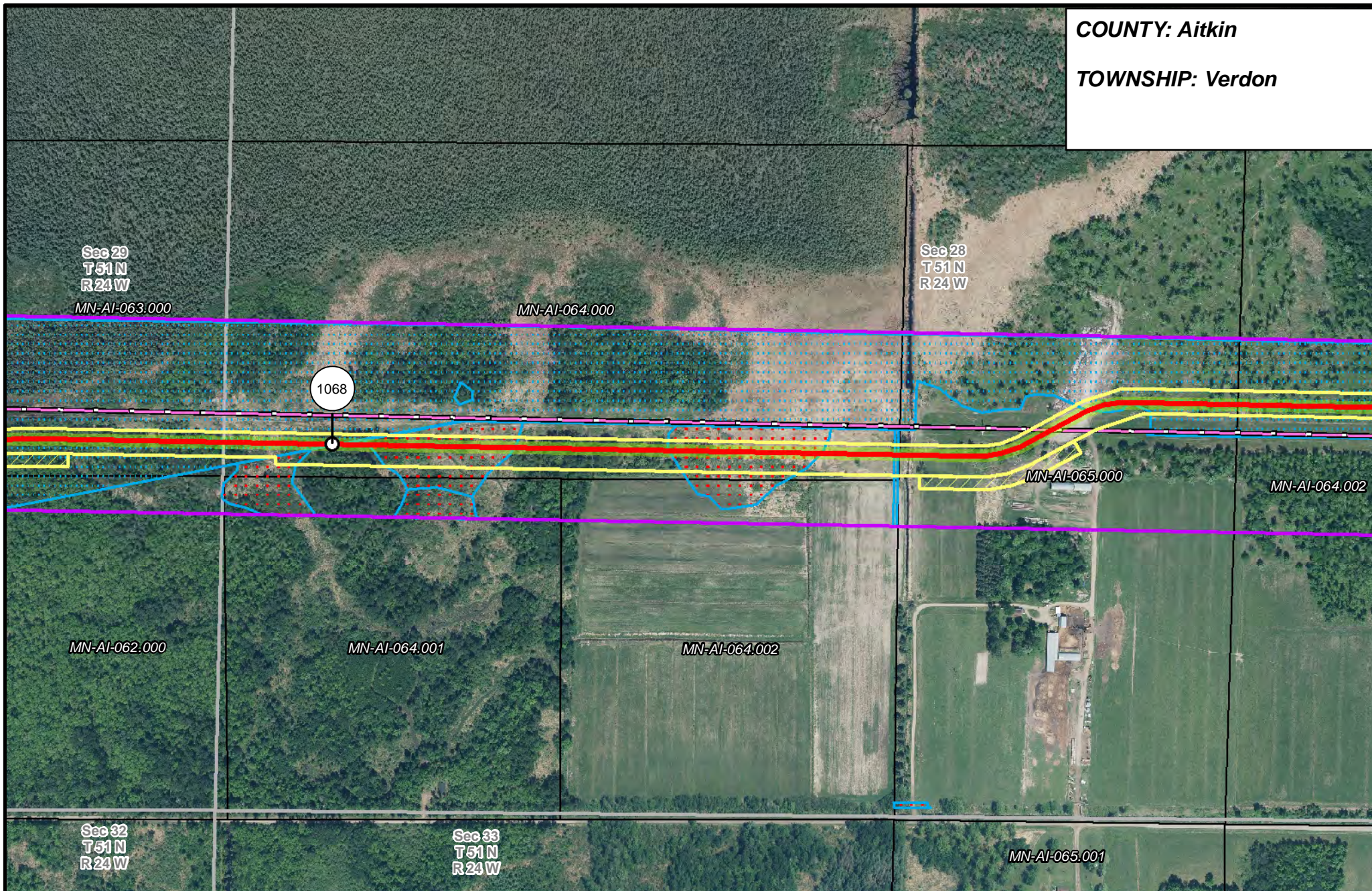


LINE 3 REPLACEMENT PIPELINE ROUTE

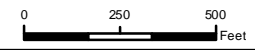
DRAWN: *MLB* CHECKED: *---*
 DATE: August 31, 2018 SCALE: 1:6,000

Map 315 of 378

COUNTY: Aitkin
TOWNSHIP: Verdon



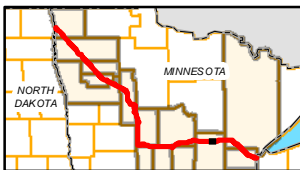
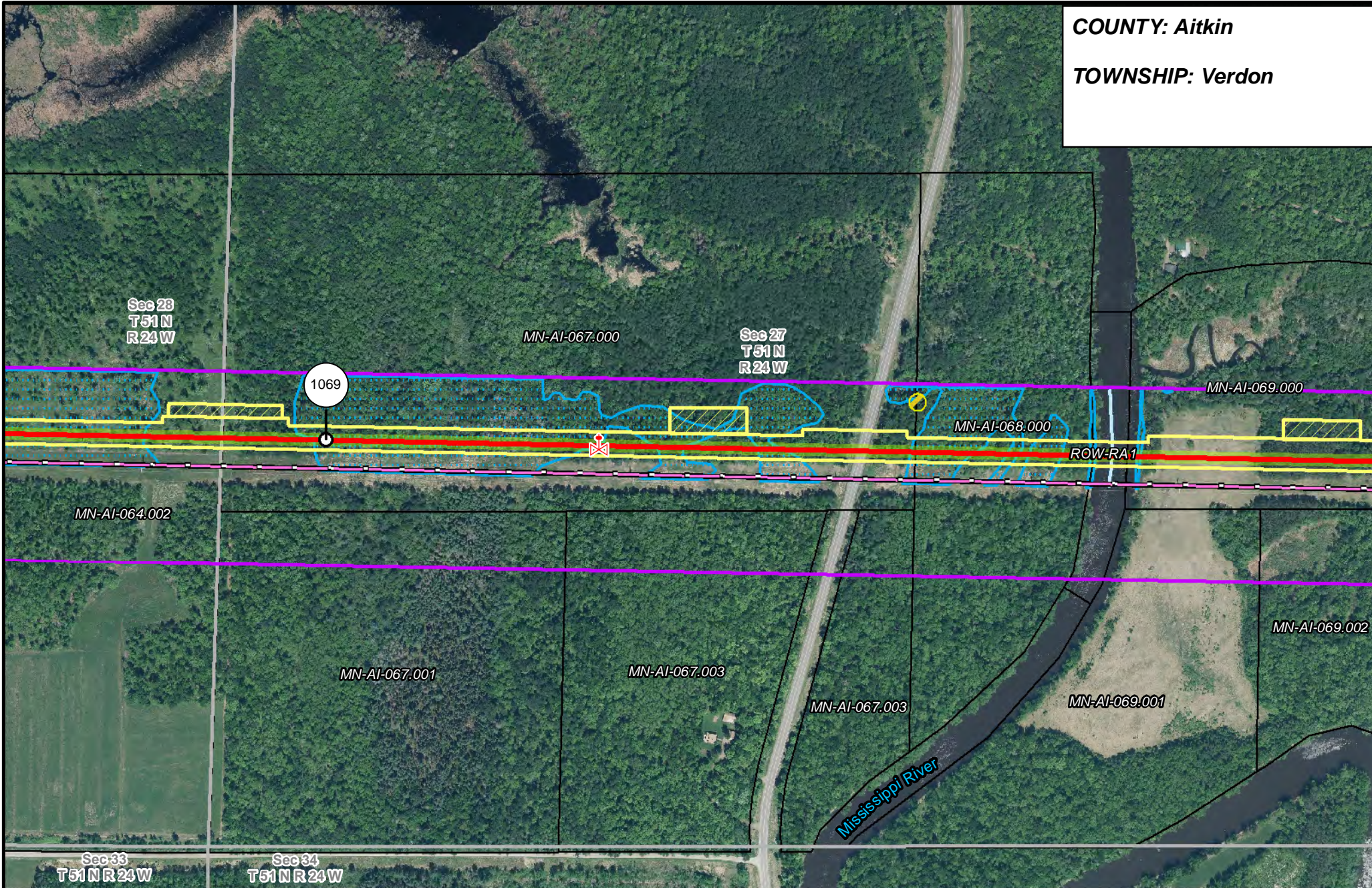
- | | | | |
|-----------------------|--------------------------------|--------------------------------|------------------------|
| PUC Designated Route | Mile Post | Surveyed Waterbodies | Tract Boundary |
| ROW | Temporary Workspace | ESA | MN Section Boundary |
| Line 3R Pipeline | Additional Temporary Workspace | Surveyed Wetlands | Township/City Boundary |
| Valve Location | Existing Enbridge Pipelines | NWI Wetlands | County Boundary |
| Enbridge Pump Station | Existing Electric Transmission | Existing Third Party Pipelines | |



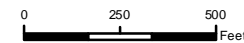
LINE 3 REPLACEMENT PIPELINE ROUTE

DRAWN: MLB CHECKED: ...
 DATE: August 31, 2018 SCALE: 1:5,000
 Map 316 of 378

COUNTY: Aitkin
TOWNSHIP: Verdon



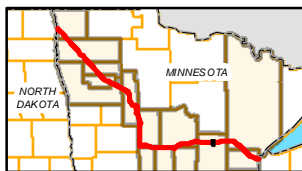
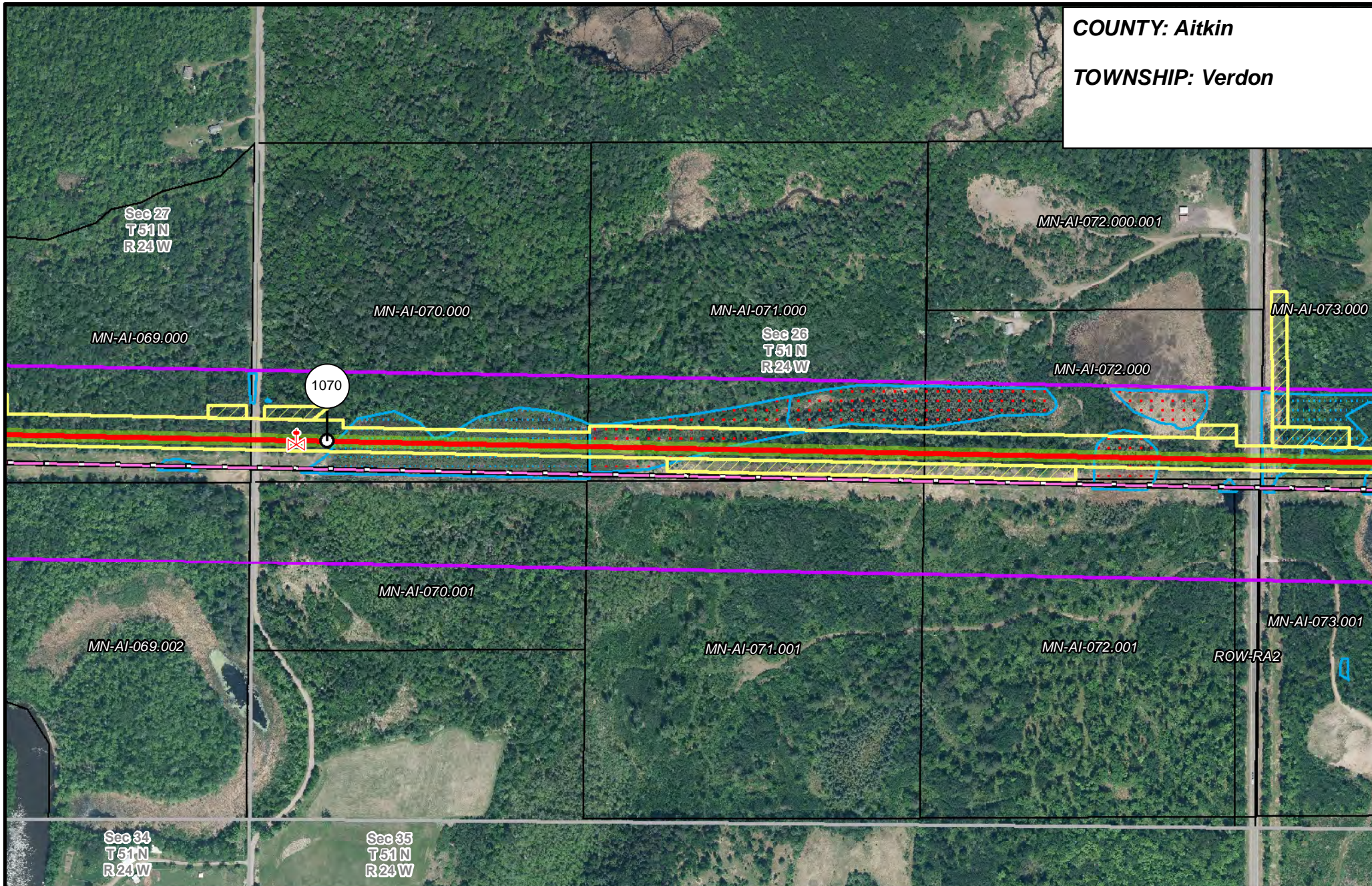
- | | | | |
|-----------------------|--------------------------------|--------------------------------|------------------------|
| PUC Designated Route | Mile Post | Surveyed Waterbodies | Tract Boundary |
| ROW | Temporary Workspace | ESA | MN Section Boundary |
| Line 3R Pipeline | Additional Temporary Workspace | Surveyed Wetlands | Township/City Boundary |
| Valve Location | Existing Enbridge Pipelines | NWI Wetlands | County Boundary |
| Enbridge Pump Station | Existing Electric Transmission | Existing Third Party Pipelines | |



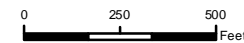
**LINE 3 REPLACEMENT
PIPELINE ROUTE**

DRAWN: MLB CHECKED: ...
DATE: August 31, 2018 SCALE: 1:6,000
Map 317 of 378

COUNTY: Aitkin
TOWNSHIP: Verdon



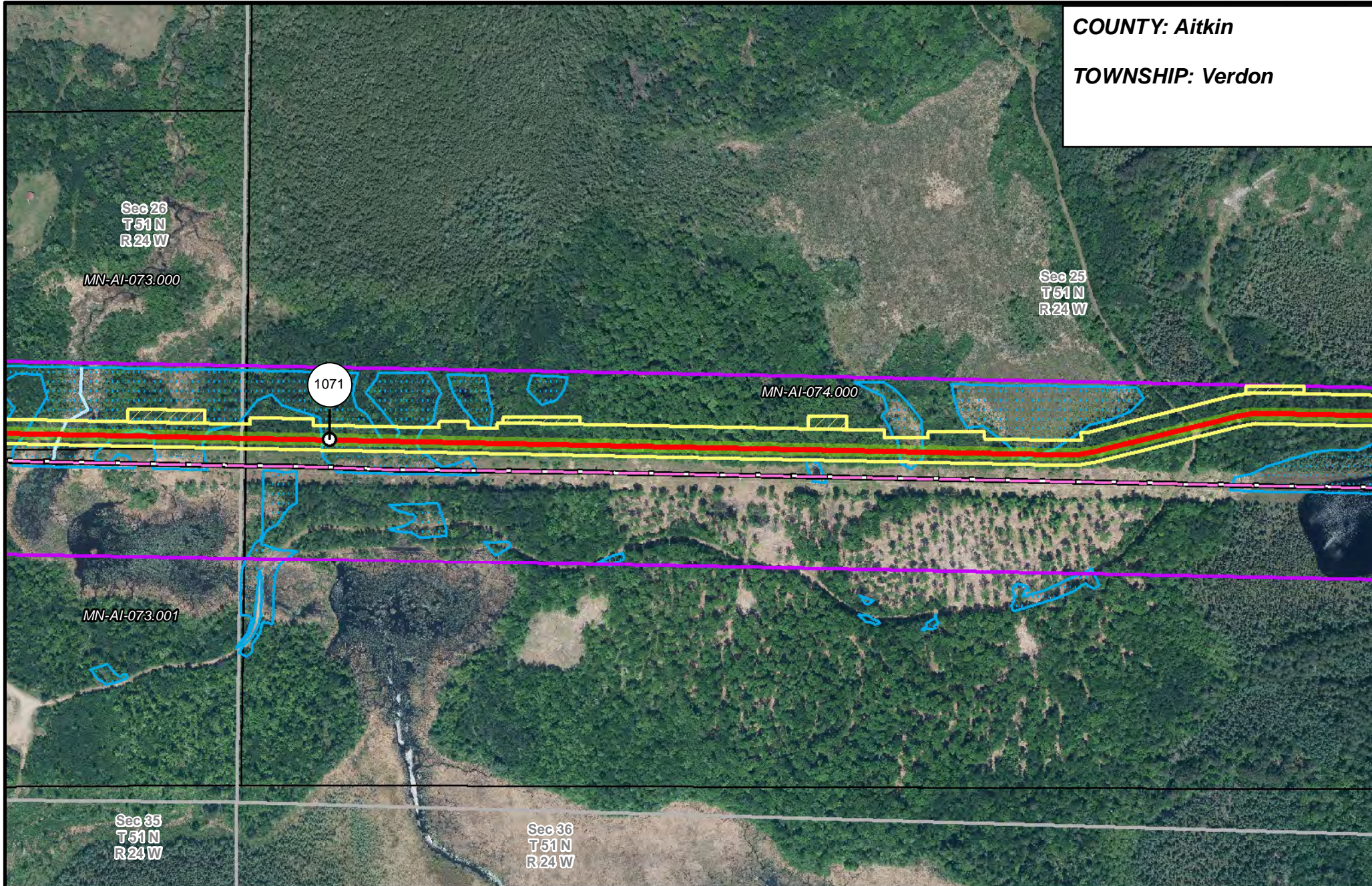
- | | | | |
|-----------------------|--------------------------------|--------------------------------|------------------------|
| PUC Designated Route | Mile Post | Surveyed Waterbodies | Tract Boundary |
| ROW | Temporary Workspace | ESA | MN Section Boundary |
| Line 3R Pipeline | Additional Temporary Workspace | Surveyed Wetlands | Township/City Boundary |
| Valve Location | Existing Enbridge Pipelines | NWI Wetlands | County Boundary |
| Enbridge Pump Station | Existing Electric Transmission | Existing Third Party Pipelines | |



**LINE 3 REPLACEMENT
PIPELINE ROUTE**

DRAWN: MLB CHECKED: ...
DATE: August 31, 2018 SCALE: 1:5,000
Map 318 of 378

COUNTY: Aitkin
TOWNSHIP: Verdon



Sec 26
T51N
R24W

MN-AI-073.000

Sec 25
T51N
R24W

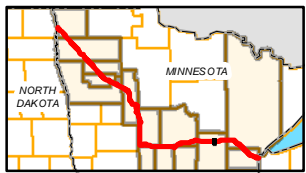
MN-AI-074.000

1071

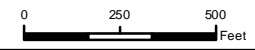
MN-AI-073.001

Sec 35
T51N
R24W

Sec 36
T51N
R24W



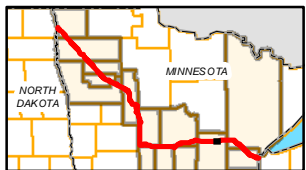
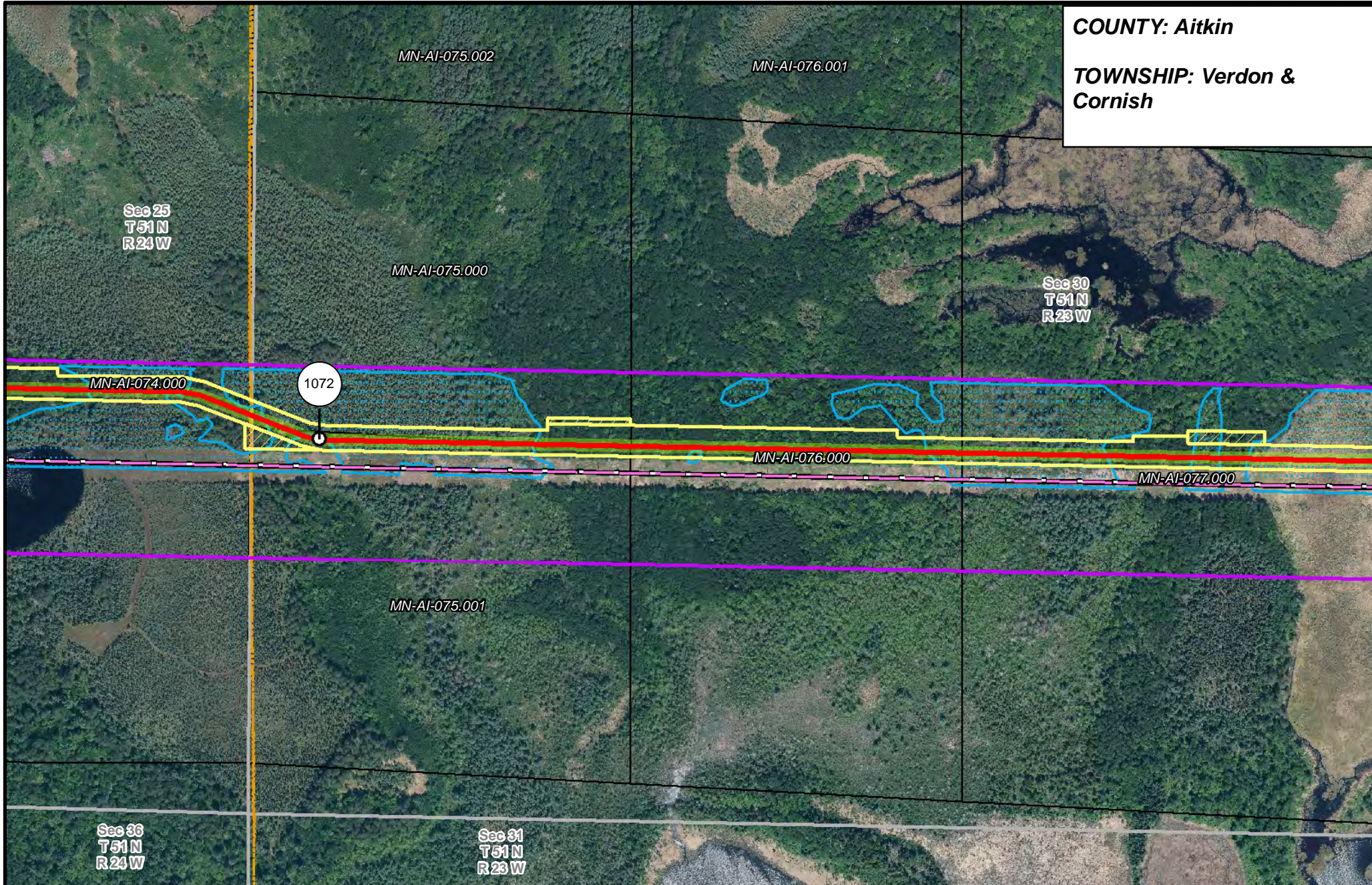
- | | | | |
|-----------------------|--------------------------------|----------------------|------------------------|
| PUC Designated Route | Mile Post | Surveyed Waterbodies | Tract Boundary |
| ROW | Temporary Workspace | ESA | MN Section Boundary |
| Line 3R Pipeline | Additional Temporary Workspace | Surveyed Wetlands | Township/City Boundary |
| Valve Location | Existing Enbridge Pipelines | NWI Wetlands | County Boundary |
| Enbridge Pump Station | Existing Electric Transmission | | |
| | Existing Third Party Pipelines | | |



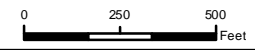
**LINE 3 REPLACEMENT
PIPELINE ROUTE**

DRAWN: MLB CHECKED: ...
 DATE: August 31, 2018 SCALE: 1:6,000
 Map 319 of 378

COUNTY: Aitkin
TOWNSHIP: Verdon & Cornish



- | | | | |
|-----------------------|--------------------------------|----------------------|------------------------|
| PUC Designated Route | Mile Post | Surveyed Waterbodies | Tract Boundary |
| ROW | Temporary Workspace | ESA | MN Section Boundary |
| Line 3R Pipeline | Additional Temporary Workspace | Surveyed Wetlands | Township/City Boundary |
| Valve Location | Existing Enbridge Pipelines | NWI Wetlands | County Boundary |
| Enbridge Pump Station | Existing Electric Transmission | | |
| | Existing Third Party Pipelines | | |

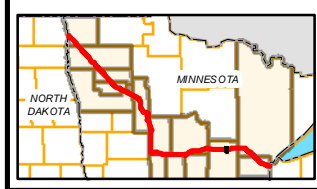
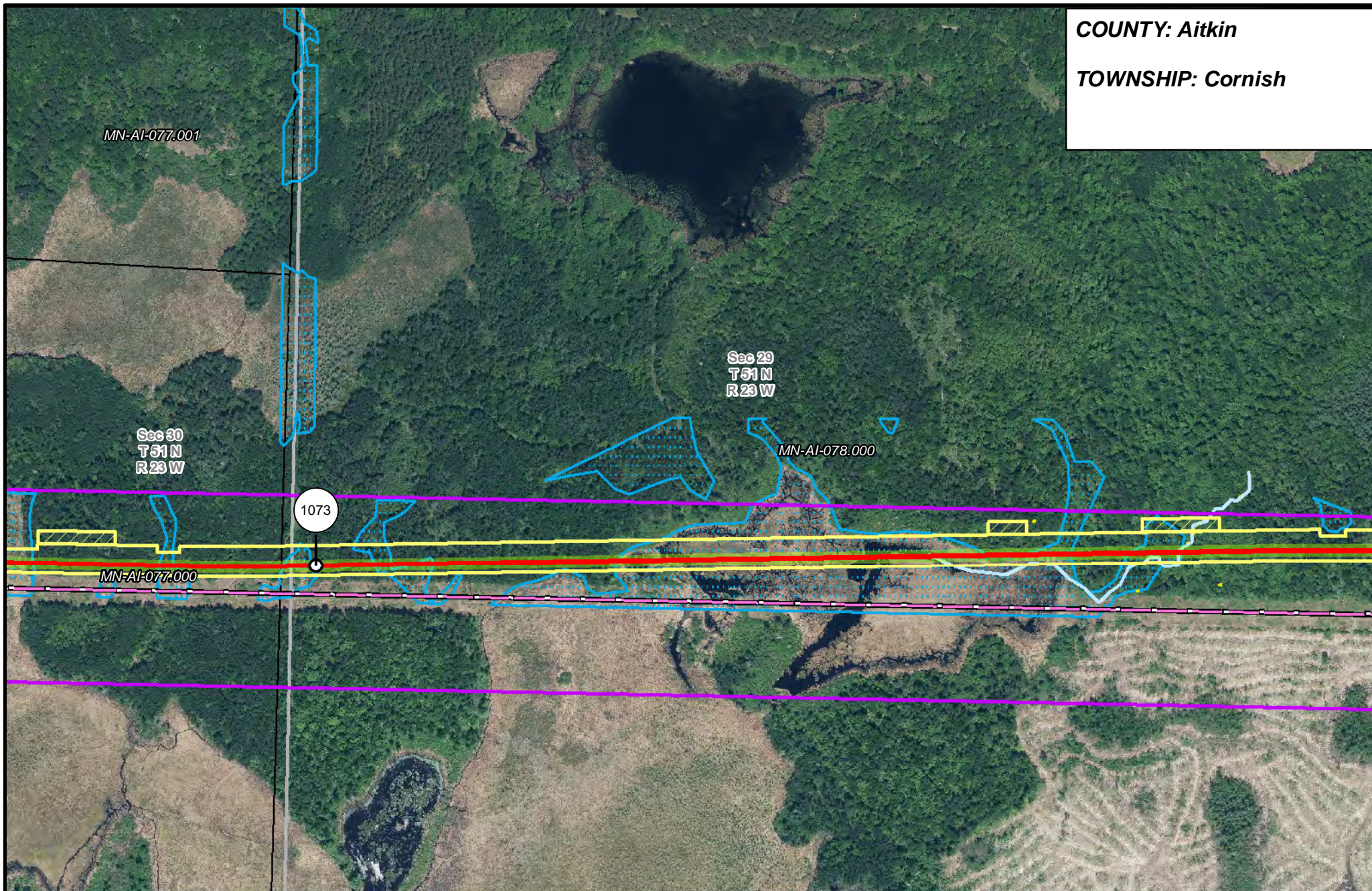


LINE 3 REPLACEMENT PIPELINE ROUTE

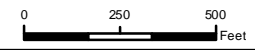
DRAWN: *MLB* CHECKED: *---*
 DATE: August 31, 2018 SCALE: 1:5,000

Map 320 of 378

COUNTY: Aitkin
TOWNSHIP: Cornish



- | | | | |
|-----------------------|--------------------------------|----------------------|------------------------|
| PUC Designated Route | Mile Post | Surveyed Waterbodies | Tract Boundary |
| ROW | Temporary Workspace | ESA | MN Section Boundary |
| Line 3R Pipeline | Additional Temporary Workspace | Surveyed Wetlands | Township/City Boundary |
| Valve Location | Existing Enbridge Pipelines | NWI Wetlands | County Boundary |
| Enbridge Pump Station | Existing Electric Transmission | | |
| | Existing Third Party Pipelines | | |

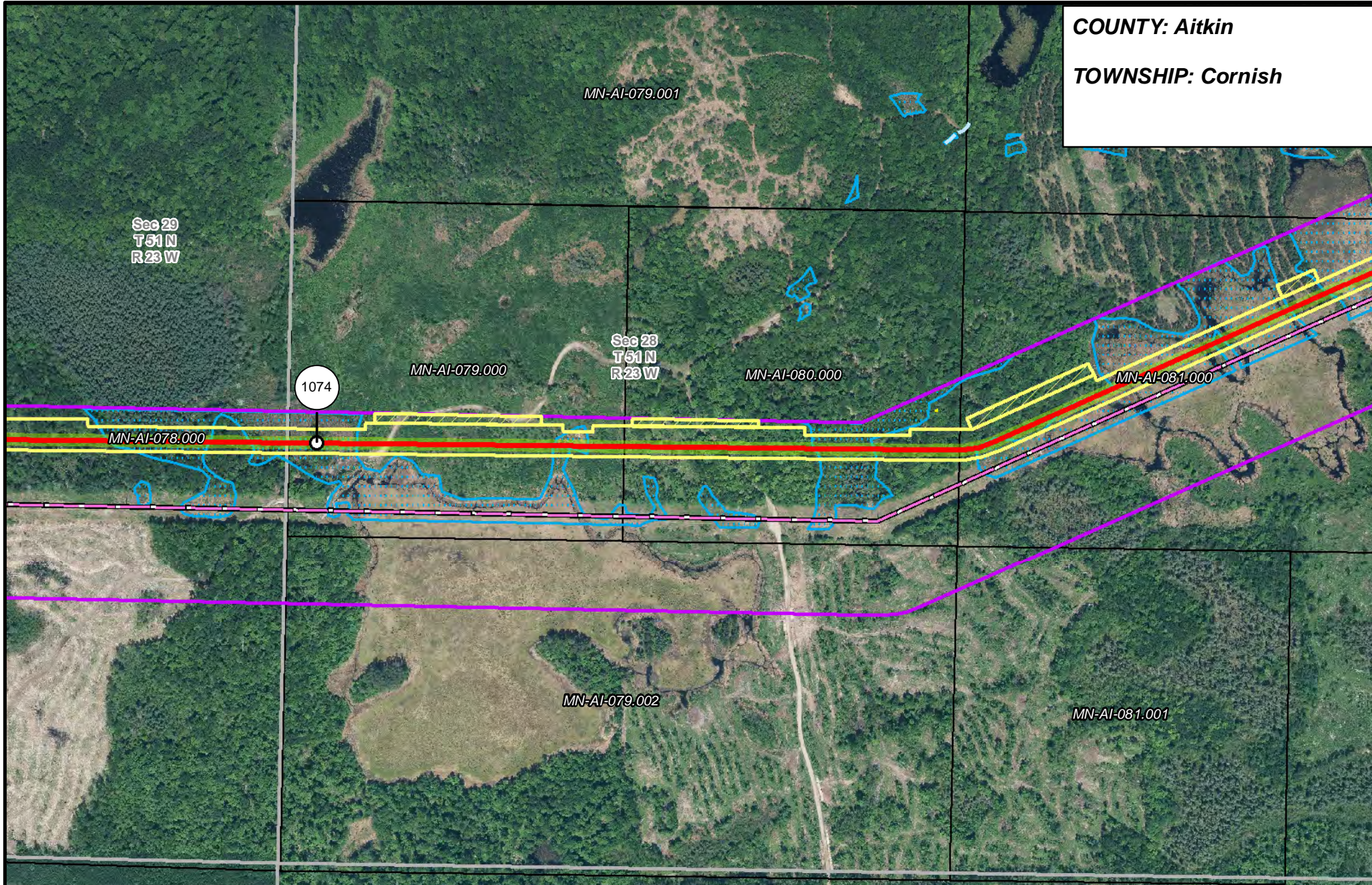


LINE 3 REPLACEMENT PIPELINE ROUTE

DRAWN: *MLB* CHECKED: *---*
 DATE: August 31, 2018 SCALE: 1:6,000

Map 321 of 378

COUNTY: Aitkin
TOWNSHIP: Cornish



Sec 29
T51 N
R23 W

MN-AI-079.001

MN-AI-079.000

Sec 28
T51 N
R23 W

MN-AI-080.000

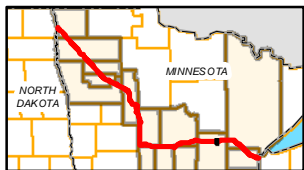
MN-AI-081.000

1074

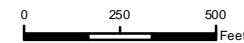
MN-AI-078.000

MN-AI-079.002

MN-AI-081.001



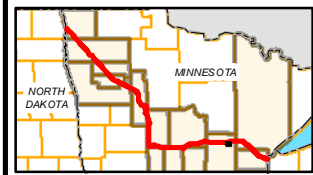
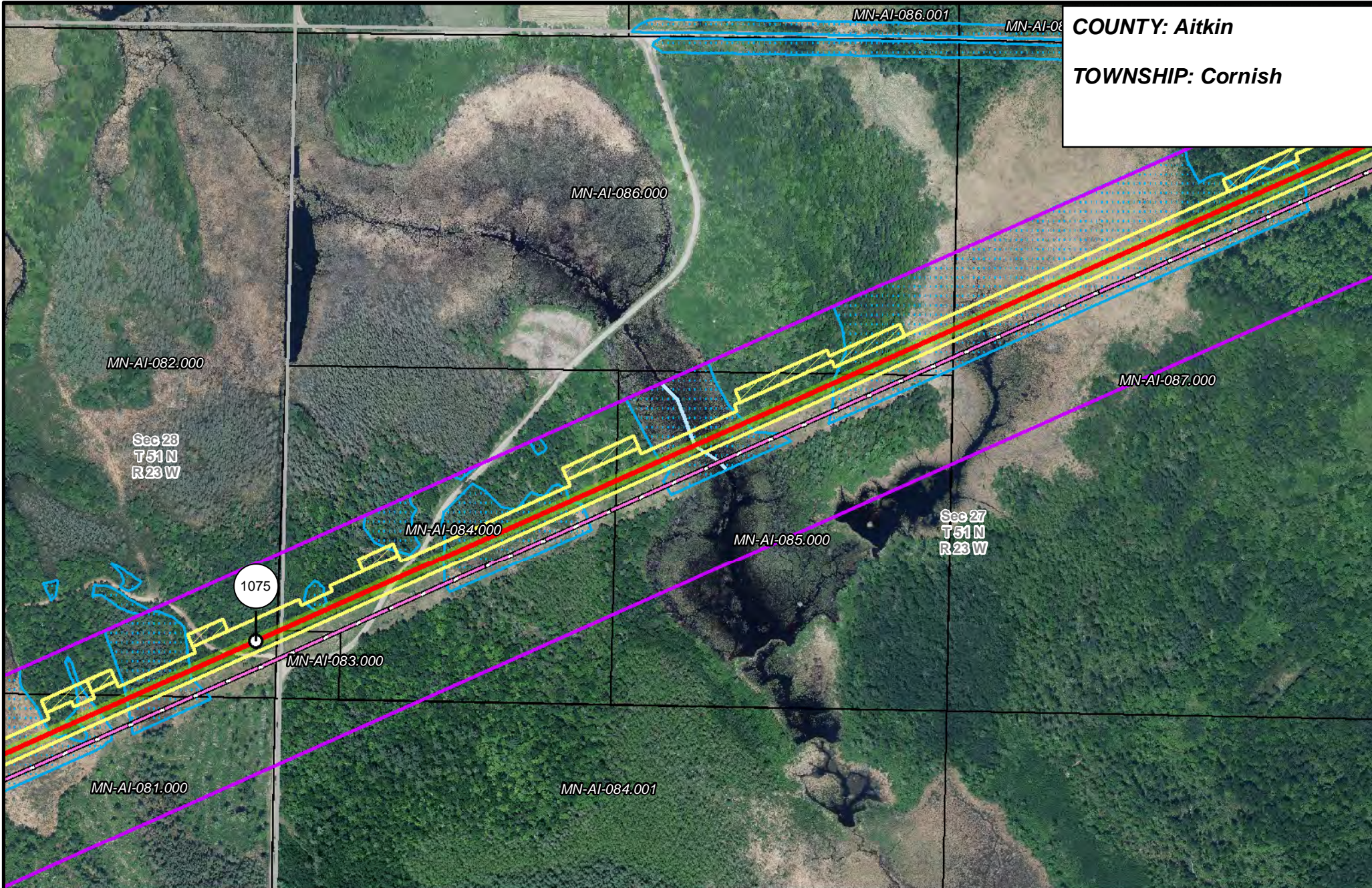
- | | | | |
|-----------------------|--------------------------------|----------------------|------------------------|
| PUC Designated Route | Mile Post | Surveyed Waterbodies | Tract Boundary |
| ROW | Temporary Workspace | ESA | MN Section Boundary |
| Line 3R Pipeline | Additional Temporary Workspace | Surveyed Wetlands | Township/City Boundary |
| Valve Location | Existing Enbridge Pipelines | NWI Wetlands | County Boundary |
| Enbridge Pump Station | Existing Electric Transmission | | |
| | Existing Third Party Pipelines | | |



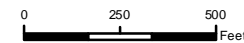
**LINE 3 REPLACEMENT
PIPELINE ROUTE**

DRAWN: MLB CHECKED: ...
 DATE: August 31, 2018 SCALE: 1:5,000
 Map 322 of 378

COUNTY: Aitkin
TOWNSHIP: Cornish



- | | | | |
|-----------------------|--------------------------------|----------------------|------------------------|
| PUC Designated Route | Mile Post | Surveyed Waterbodies | Tract Boundary |
| ROW | Temporary Workspace | ESA | MN Section Boundary |
| Line 3R Pipeline | Additional Temporary Workspace | Surveyed Wetlands | Township/City Boundary |
| Valve Location | Existing Enbridge Pipelines | NWI Wetlands | County Boundary |
| Enbridge Pump Station | Existing Electric Transmission | | |
| | Existing Third Party Pipelines | | |

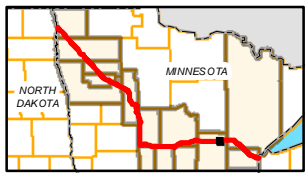
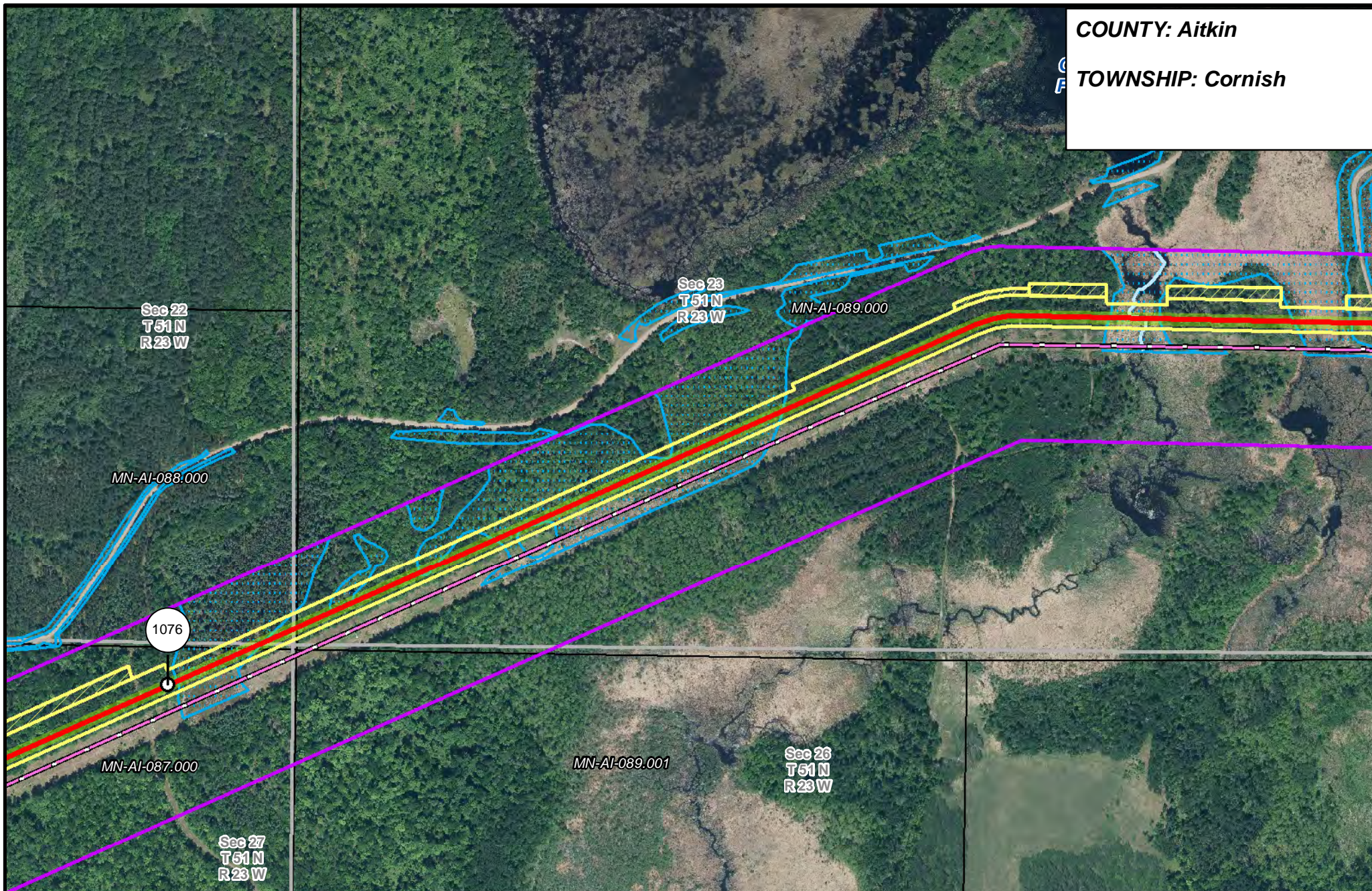


LINE 3 REPLACEMENT PIPELINE ROUTE

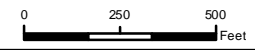
DRAWN: *MLB* CHECKED: *---*
 DATE: August 31, 2018 SCALE: 1:5,000

Map 323 of 378

COUNTY: Aitkin
TOWNSHIP: Cornish



- | | | | |
|-----------------------|--------------------------------|----------------------|------------------------|
| PUC Designated Route | Mile Post | Surveyed Waterbodies | Tract Boundary |
| ROW | Temporary Workspace | ESA | MN Section Boundary |
| Line 3R Pipeline | Additional Temporary Workspace | Surveyed Wetlands | Township/City Boundary |
| Valve Location | Existing Enbridge Pipelines | NWI Wetlands | County Boundary |
| Enbridge Pump Station | Existing Electric Transmission | | |
| | Existing Third Party Pipelines | | |



**LINE 3 REPLACEMENT
PIPELINE ROUTE**

DRAWN: MLB CHECKED: ...
DATE: August 31, 2018 SCALE: 1:6,000
Map 324 of 378

COUNTY: Aitkin

TOWNSHIP: Cornish

Sec 23
T51 N
R23 W

Sec 24
T51 N
R23 W

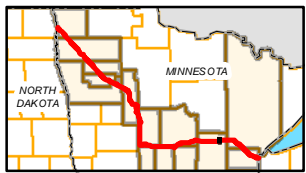
MN-AI-089.000

MN-AI-090.000

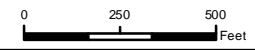
1077

Sec 26
T51 N
R23 W

Sec 25
T51 N
R23 W



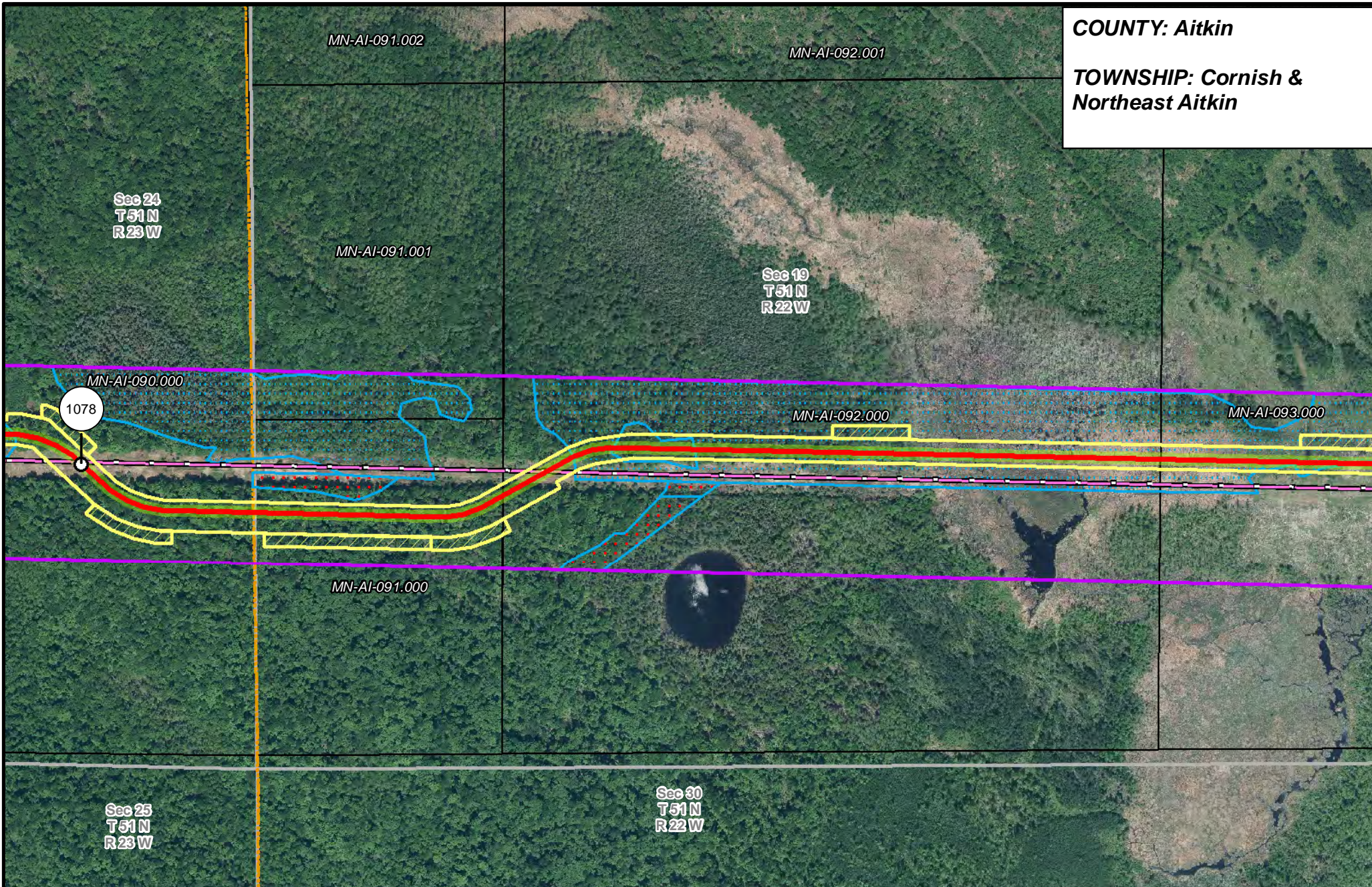
- PUC Designated Route
- ROW
- Line 3R Pipeline
- Valve Location
- Enbridge Pump Station
- Mile Post
- Temporary Workspace
- Additional Temporary Workspace
- Existing Enbridge Pipelines
- Existing Electric Transmission
- Existing Third Party Pipelines
- Surveyed Waterbodies
- ESA
- Surveyed Wetlands
- NWI Wetlands
- Tract Boundary
- MN Section Boundary
- Township/City Boundary
- County Boundary



LINE 3 REPLACEMENT PIPELINE ROUTE

DRAWN: MLB CHECKED: ...
DATE: August 31, 2018 SCALE: 1:5,000
Map 325 of 378

COUNTY: Aitkin
TOWNSHIP: Cornish & Northeast Aitkin



Sec 24
T 51 N
R 23 W

MN-AI-091.002

MN-AI-092.001

MN-AI-091.001

Sec 19
T 51 N
R 22 W

MN-AI-090.000

1078

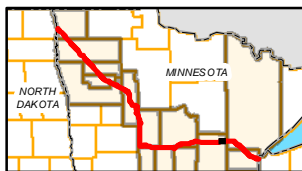
MN-AI-092.000

MN-AI-093.000

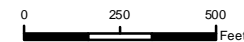
MN-AI-091.000

Sec 25
T 51 N
R 23 W

Sec 30
T 51 N
R 22 W



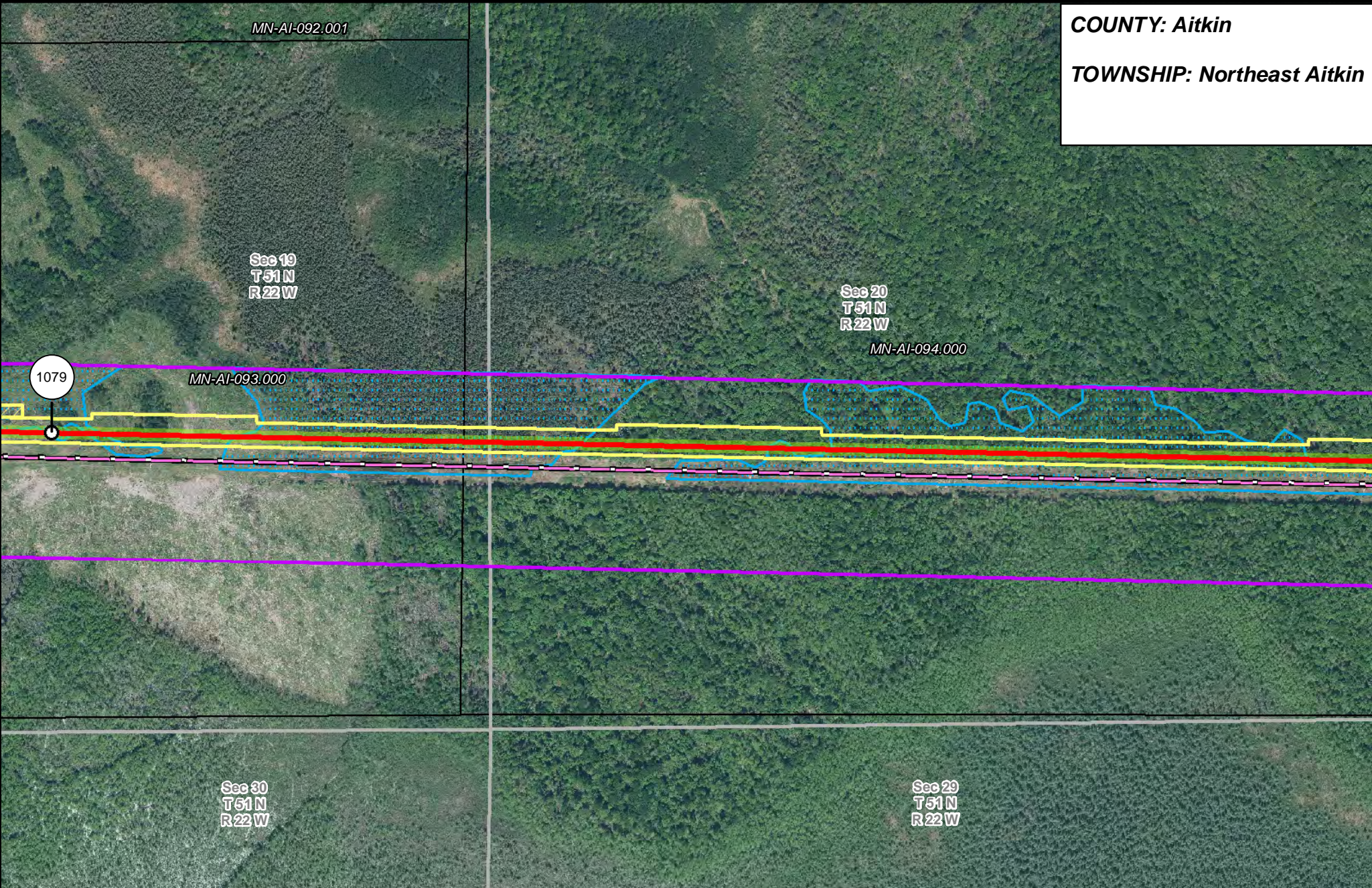
- PUC Designated Route
- ROW
- Line 3R Pipeline
- Valve Location
- Enbridge Pump Station
- Mile Post
- Temporary Workspace
- Additional Temporary Workspace
- Existing Enbridge Pipelines
- Existing Electric Transmission
- Existing Third Party Pipelines
- Surveyed Waterbodies
- ESA
- Surveyed Wetlands
- NWI Wetlands
- Tract Boundary
- MN Section Boundary
- Township/City Boundary
- County Boundary



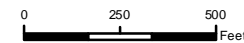
**LINE 3 REPLACEMENT
PIPELINE ROUTE**

DRAWN: MLB CHECKED: ...
 DATE: August 31, 2018 SCALE: 1:5,000
 Map 326 of 378

COUNTY: Aitkin
TOWNSHIP: Northeast Aitkin



- | | | | |
|-----------------------|--------------------------------|--------------------------------|------------------------|
| PUC Designated Route | Mile Post | Surveyed Waterbodies | Tract Boundary |
| ROW | Temporary Workspace | ESA | MN Section Boundary |
| Line 3R Pipeline | Additional Temporary Workspace | Surveyed Wetlands | Township/City Boundary |
| Valve Location | Existing Enbridge Pipelines | NWI Wetlands | County Boundary |
| Enbridge Pump Station | Existing Electric Transmission | Existing Third Party Pipelines | |



**LINE 3 REPLACEMENT
PIPELINE ROUTE**

DRAWN: *MLB* CHECKED: *---*
DATE: August 31, 2018 SCALE: 1:5,000
Map 327 of 378