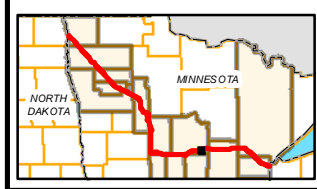
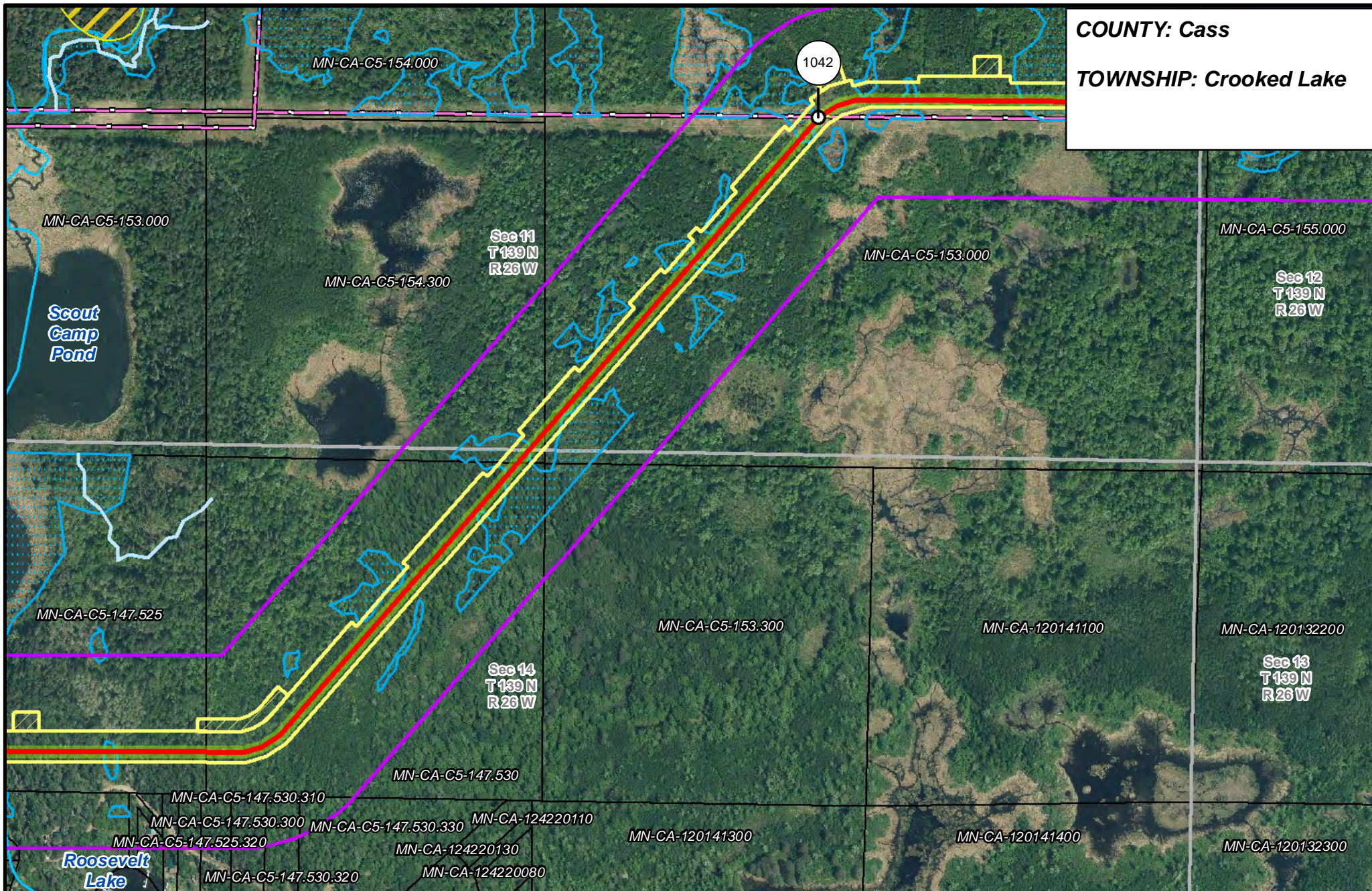
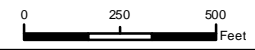


COUNTY: Cass
TOWNSHIP: Crooked Lake



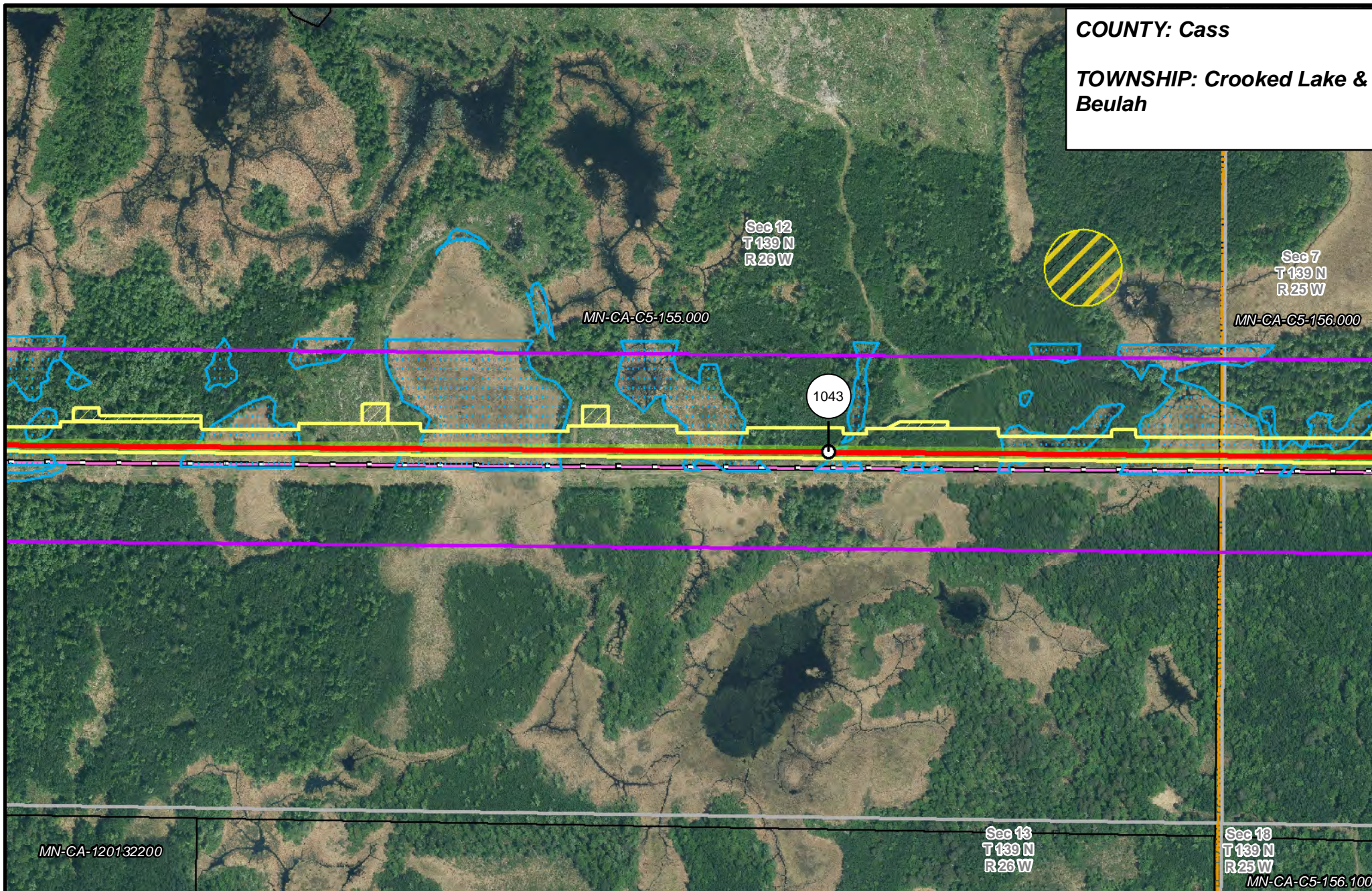
- | | | | |
|-----------------------|--------------------------------|--------------------------------|------------------------|
| PUC Designated Route | Mile Post | Surveyed Waterbodies | Tract Boundary |
| ROW | Temporary Workspace | ESA | MN Section Boundary |
| Line 3R Pipeline | Additional Temporary Workspace | Surveyed Wetlands | Township/City Boundary |
| Valve Location | Existing Enbridge Pipelines | NWI Wetlands | County Boundary |
| Enbridge Pump Station | Existing Electric Transmission | Existing Third Party Pipelines | |



LINE 3 REPLACEMENT PIPELINE ROUTE

DRAWN: MLB CHECKED: ...
 DATE: August 31, 2018 SCALE: 1:6,000
 Map 290 of 378

COUNTY: Cass
TOWNSHIP: Crooked Lake & Beulah



MN-CA-C5-155.000

MN-CA-C5-156.000

Sec 12
T 139 N
R 26 W

Sec 7
T 139 N
R 25 W

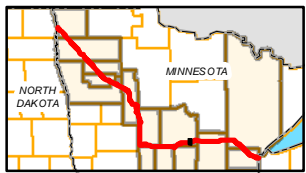
1043

MN-CA-120132200

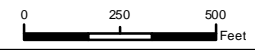
Sec 13
T 139 N
R 26 W

Sec 13
T 139 N
R 25 W

MN-CA-C5-156.100



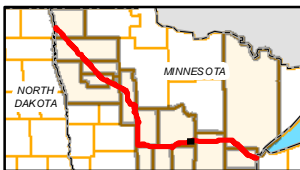
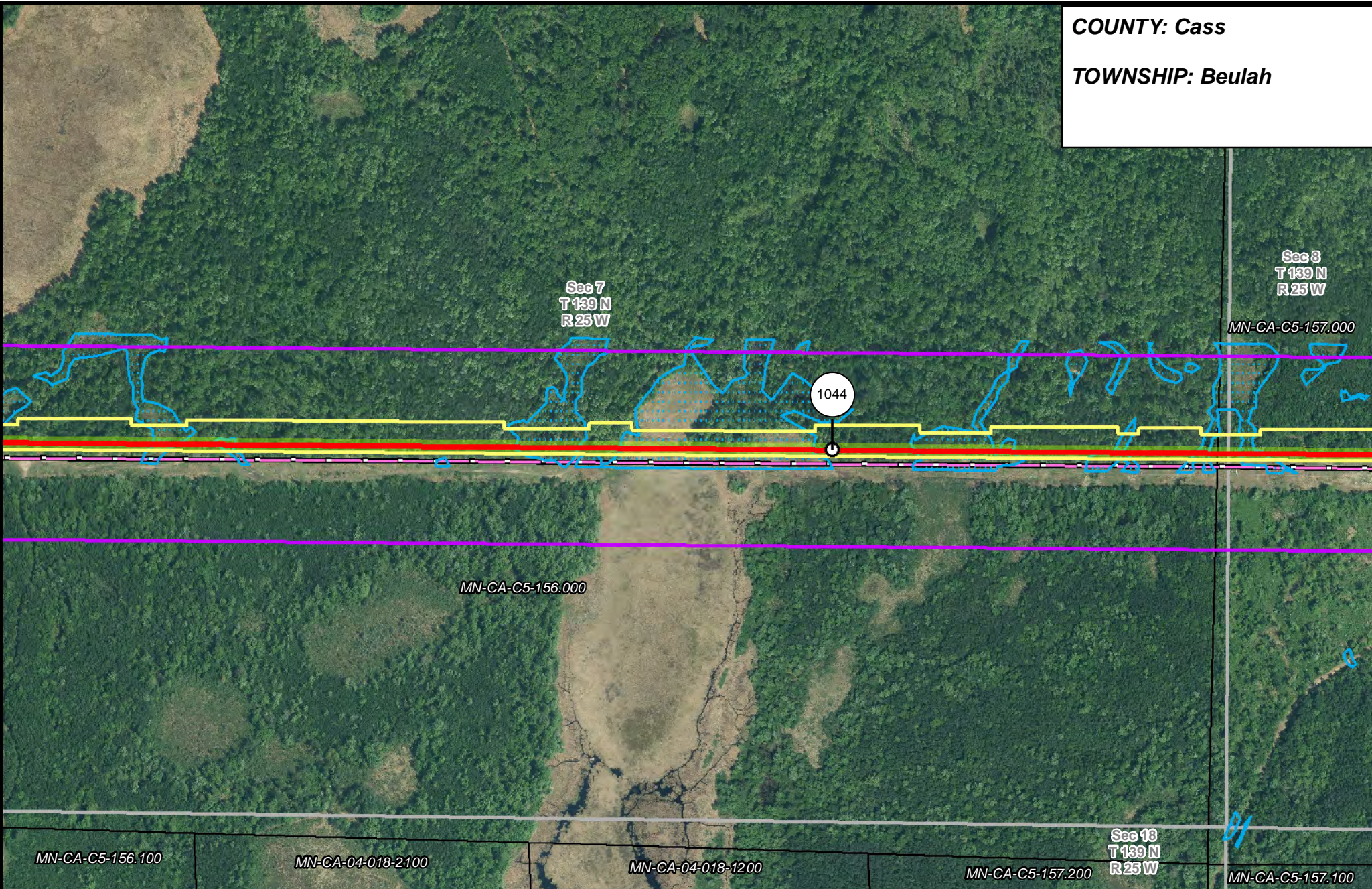
- PUC Designated Route
- Mile Post
- Surveyed Waterbodies
- Tract Boundary
- ROW
- Temporary Workspace
- ESA
- MN Section Boundary
- Line 3R Pipeline
- Additional Temporary Workspace
- Surveyed Wetlands
- Township/City Boundary
- Valve Location
- Existing Enbridge Pipelines
- NWI Wetlands
- County Boundary
- Enbridge Pump Station
- Existing Electric Transmission
- Existing Third Party Pipelines



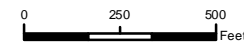
LINE 3 REPLACEMENT PIPELINE ROUTE

DRAWN: MLB CHECKED: ...
 DATE: August 31, 2018 SCALE: 1:5,000
 Map 291 of 378

COUNTY: Cass
TOWNSHIP: Beulah



- | | | | |
|-----------------------|--------------------------------|----------------------|------------------------|
| PUC Designated Route | Mile Post | Surveyed Waterbodies | Tract Boundary |
| ROW | Temporary Workspace | ESA | MN Section Boundary |
| Line 3R Pipeline | Additional Temporary Workspace | Surveyed Wetlands | Township/City Boundary |
| Valve Location | Existing Enbridge Pipelines | NWI Wetlands | County Boundary |
| Enbridge Pump Station | Existing Electric Transmission | | |
| | Existing Third Party Pipelines | | |



LINE 3 REPLACEMENT PIPELINE ROUTE

DRAWN: MLB CHECKED: ...
 DATE: August 31, 2018 SCALE: 1:5,000
 Map 292 of 378

COUNTY: Cass
TOWNSHIP: Beulah

Sec 8
 T 139 N
 R 25 W

MN-CA-C5-157.000

1045

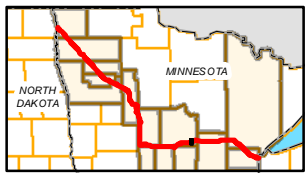
MN-CA-C5-157.300

Sec 9
 T 139 N
 R 25 W

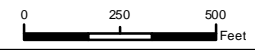
Sec 17
 T 139 N R 25 W

Sec 16
 T 139 N
 R 25 W

MN-CA-C5-157.100



- PUC Designated Route
- ROW
- Line 3R Pipeline
- Valve Location
- Enbridge Pump Station
- Mile Post
- Temporary Workspace
- Additional Temporary Workspace
- Existing Enbridge Pipelines
- Existing Electric Transmission
- Existing Third Party Pipelines
- Surveyed Waterbodies
- ESA
- Surveyed Wetlands
- NWI Wetlands
- Tract Boundary
- MN Section Boundary
- Township/City Boundary
- County Boundary



**LINE 3 REPLACEMENT
 PIPELINE ROUTE**

DRAWN: MLB CHECKED: ...
 DATE: August 31, 2018 SCALE: 1:6,000
 Map 293 of 378

MN-CA-C5-161.000

Sec 4
T 139 N
R 25 W

COUNTY: Cass

TOWNSHIP: Beulah

MN-CA-C5-158.000

1046

MN-CA-C5-158.200

MN-CA-C5-160.300

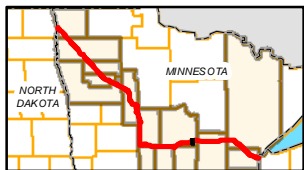
Sec 9
T 139 N
R 25 W

MN-CA-C5-159.000

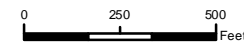
MN-CA-C5-159.300

MN-CA-C5-158.000

MN-CA-C5-157.300



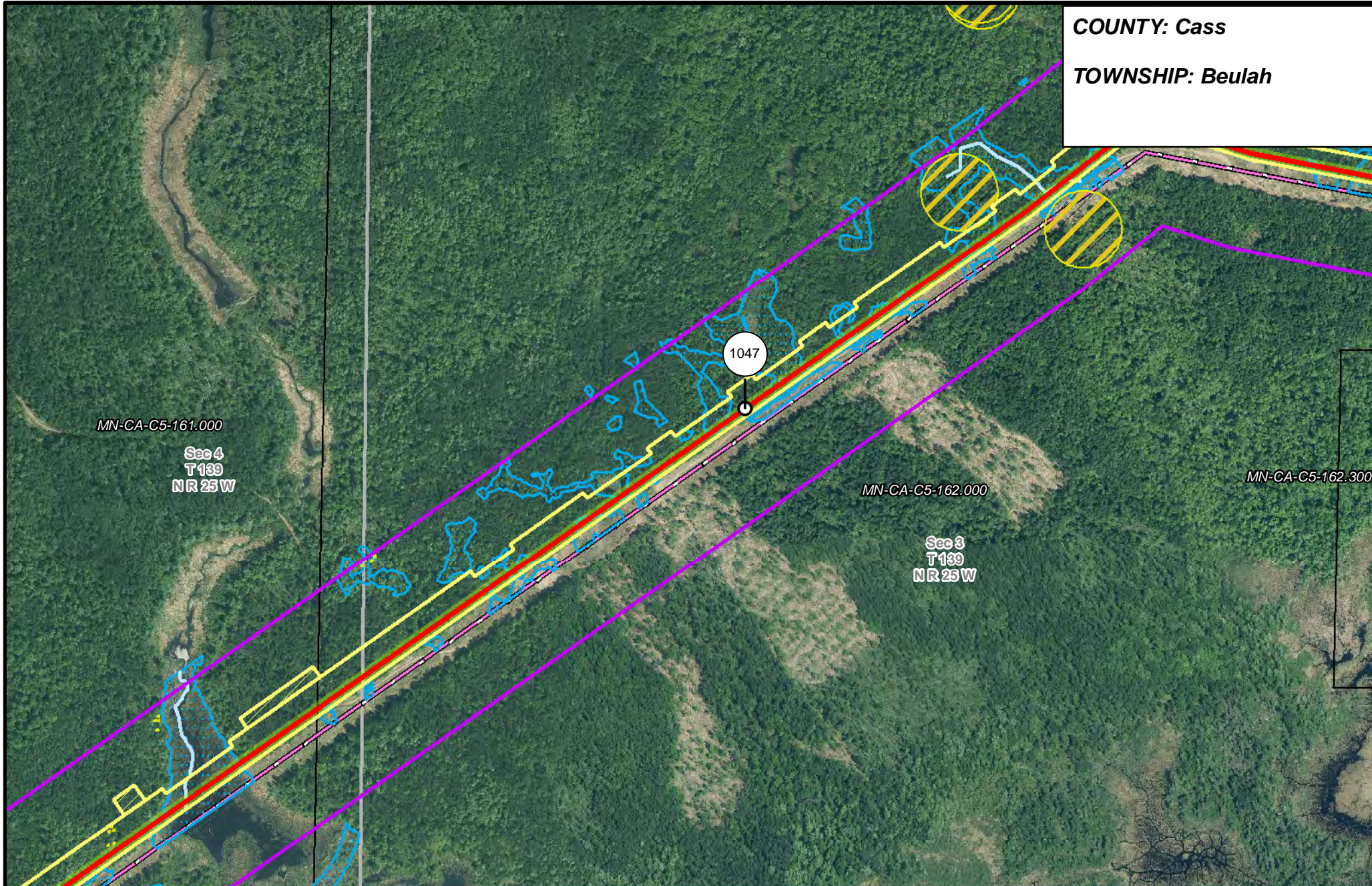
- PUC Designated Route
- ROW
- Line 3R Pipeline
- Valve Location
- Enbridge Pump Station
- Mile Post
- Temporary Workspace
- Additional Temporary Workspace
- Existing Enbridge Pipelines
- Existing Electric Transmission
- Existing Third Party Pipelines
- Surveyed Waterbodies
- ESA
- Surveyed Wetlands
- NWI Wetlands
- Tract Boundary
- MN Section Boundary
- Township/City Boundary
- County Boundary



LINE 3 REPLACEMENT PIPELINE ROUTE

DRAWN: MLB CHECKED: ...
 DATE: August 31, 2018 SCALE: 1:5,000
 Map 294 of 378

COUNTY: Cass
TOWNSHIP: Beulah

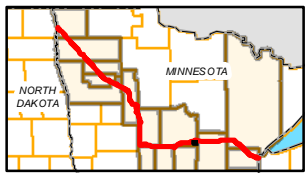


MN-CA-C5-161.000
 Sec 4
 T139
 NR 25 W

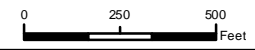
MN-CA-C5-162.000
 Sec 3
 T139
 NR 25 W

MN-CA-C5-162.300

1047



- | | | | |
|-----------------------|--------------------------------|--------------------------------|------------------------|
| PUC Designated Route | Mile Post | Surveyed Waterbodies | Tract Boundary |
| ROW | Temporary Workspace | ESA | MN Section Boundary |
| Line 3R Pipeline | Additional Temporary Workspace | Surveyed Wetlands | Township/City Boundary |
| Valve Location | Existing Enbridge Pipelines | NWI Wetlands | County Boundary |
| Enbridge Pump Station | Existing Electric Transmission | Existing Third Party Pipelines | |

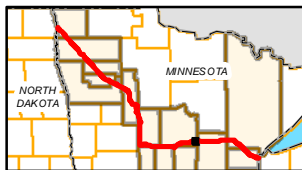
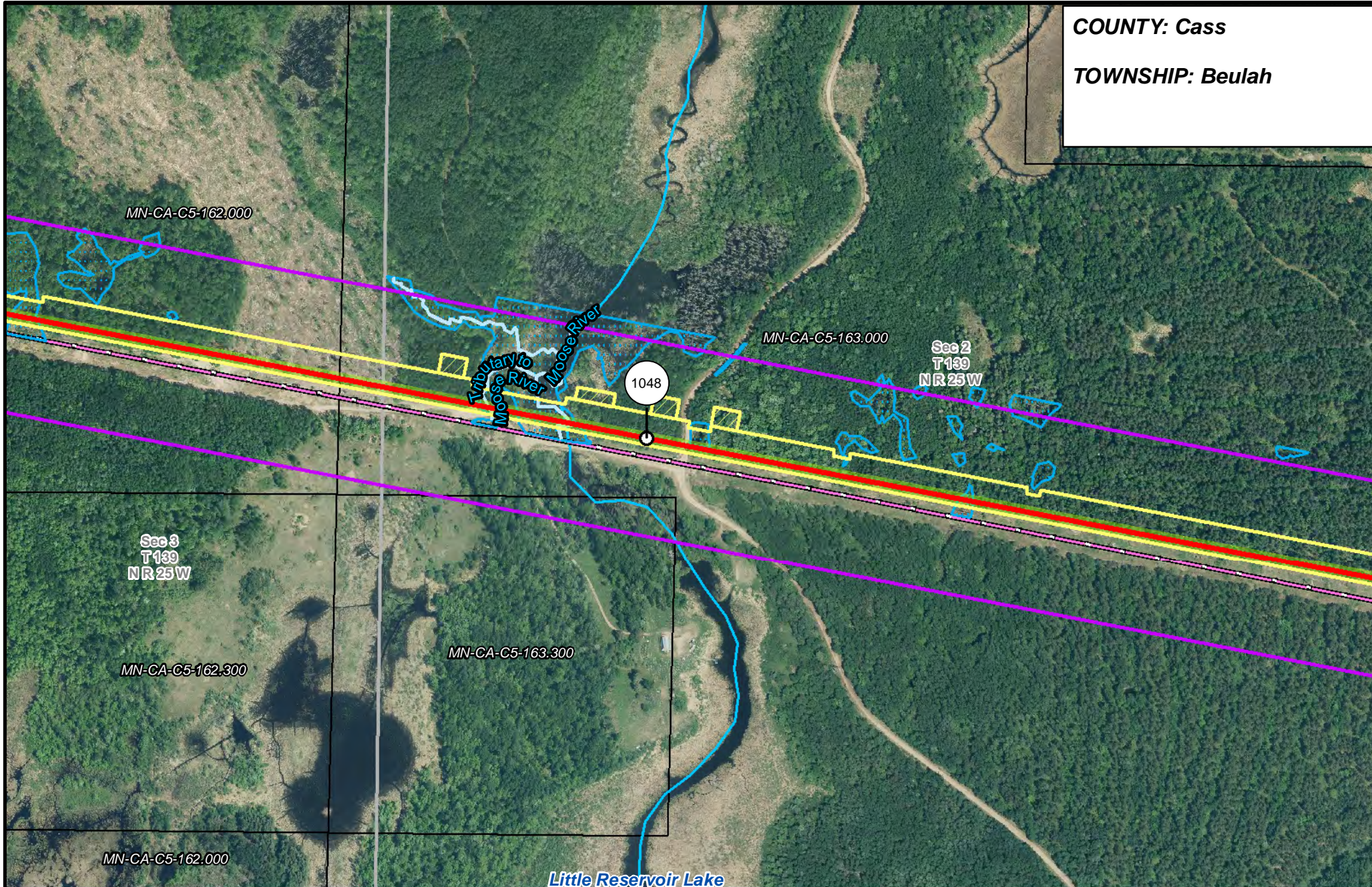


LINE 3 REPLACEMENT PIPELINE ROUTE

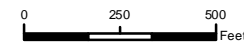
DRAWN: MLB CHECKED: ...
 DATE: August 31, 2018 SCALE: 1:5,000

Map 295 of 378

COUNTY: Cass
TOWNSHIP: Beulah



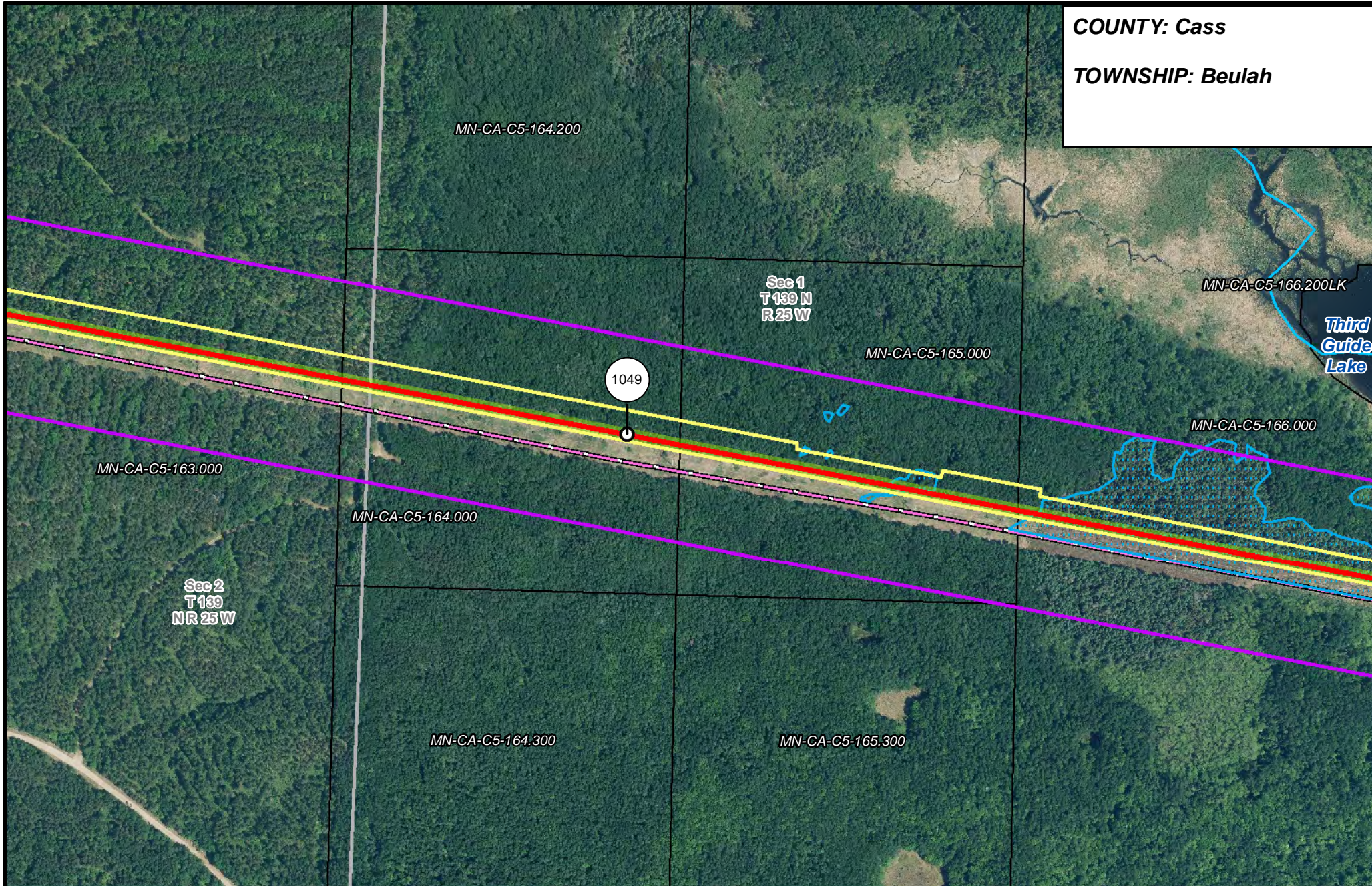
- | | | | |
|-----------------------|--------------------------------|----------------------|------------------------|
| PUC Designated Route | Mile Post | Surveyed Waterbodies | Tract Boundary |
| ROW | Temporary Workspace | ESA | MN Section Boundary |
| Line 3R Pipeline | Additional Temporary Workspace | Surveyed Wetlands | Township/City Boundary |
| Valve Location | Existing Enbridge Pipelines | NWI Wetlands | County Boundary |
| Enbridge Pump Station | Existing Electric Transmission | | |
| | Existing Third Party Pipelines | | |



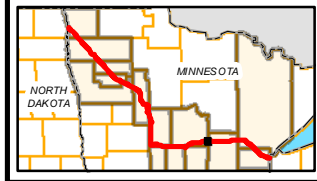
**LINE 3 REPLACEMENT
PIPELINE ROUTE**

DRAWN: MLB CHECKED: ...
DATE: August 31, 2018 SCALE: 1:5,000
Map 296 of 378

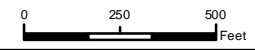
COUNTY: Cass
TOWNSHIP: Beulah



**Third
Guide
Lake**



- | | | | |
|-----------------------|--------------------------------|----------------------|------------------------|
| PUC Designated Route | Mile Post | Surveyed Waterbodies | Tract Boundary |
| ROW | Temporary Workspace | ESA | MN Section Boundary |
| Line 3R Pipeline | Additional Temporary Workspace | Surveyed Wetlands | Township/City Boundary |
| Valve Location | Existing Enbridge Pipelines | NWI Wetlands | County Boundary |
| Enbridge Pump Station | Existing Electric Transmission | | |
| | Existing Third Party Pipelines | | |

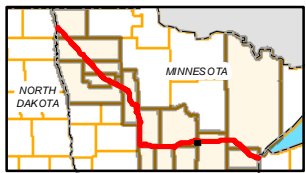
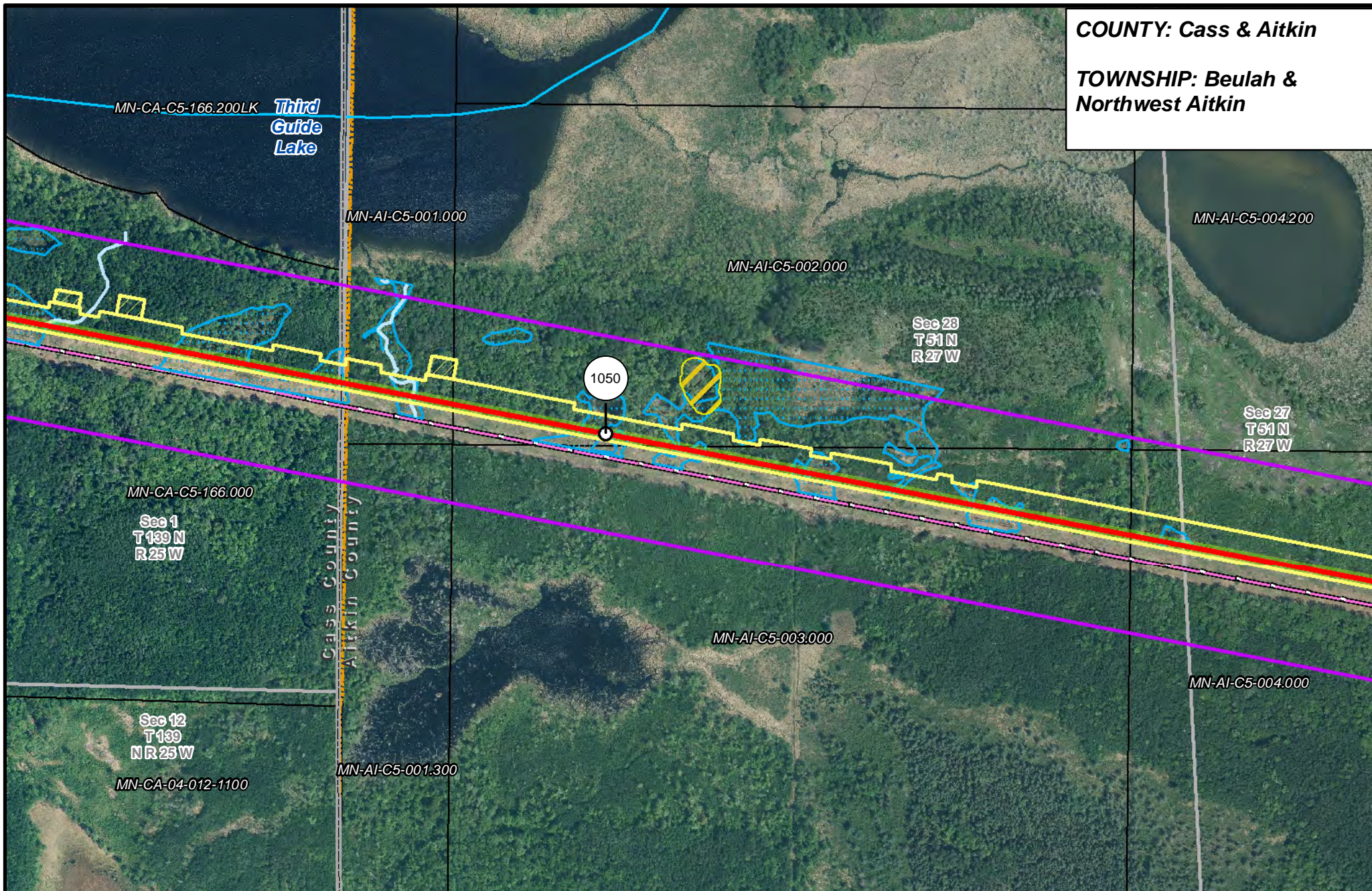


**LINE 3 REPLACEMENT
PIPELINE ROUTE**

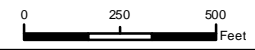
DRAWN: MLB CHECKED: ...
 DATE: August 31, 2018 SCALE: 1:5,000

Map 297 of 378

COUNTY: Cass & Aitkin
TOWNSHIP: Beulah & Northwest Aitkin



- | | | | |
|-----------------------|--------------------------------|----------------------|------------------------|
| PUC Designated Route | Mile Post | Surveyed Waterbodies | Tract Boundary |
| ROW | Temporary Workspace | ESA | MN Section Boundary |
| Line 3R Pipeline | Additional Temporary Workspace | Surveyed Wetlands | Township/City Boundary |
| Valve Location | Existing Enbridge Pipelines | NWI Wetlands | County Boundary |
| Enbridge Pump Station | Existing Electric Transmission | | |
| | Existing Third Party Pipelines | | |



LINE 3 REPLACEMENT PIPELINE ROUTE

DRAWN: MLB CHECKED: ...
 DATE: August 31, 2018 SCALE: 1:5,000
 Map 298 of 378

COUNTY: Aitkin
TOWNSHIP: Northwest Aitkin

MN-AI-C5-004.200

Sec 27
 T51 N
 R27 W

Sec 26
 T51 N
 R27 W

MN-AI-C5-005.000

1051

MN-AI-C5-004.000

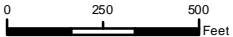
54-0-031600

54-0-031300

MN-AI-C5-005.300



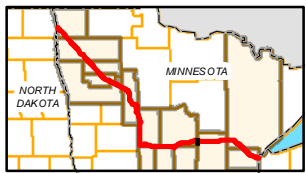
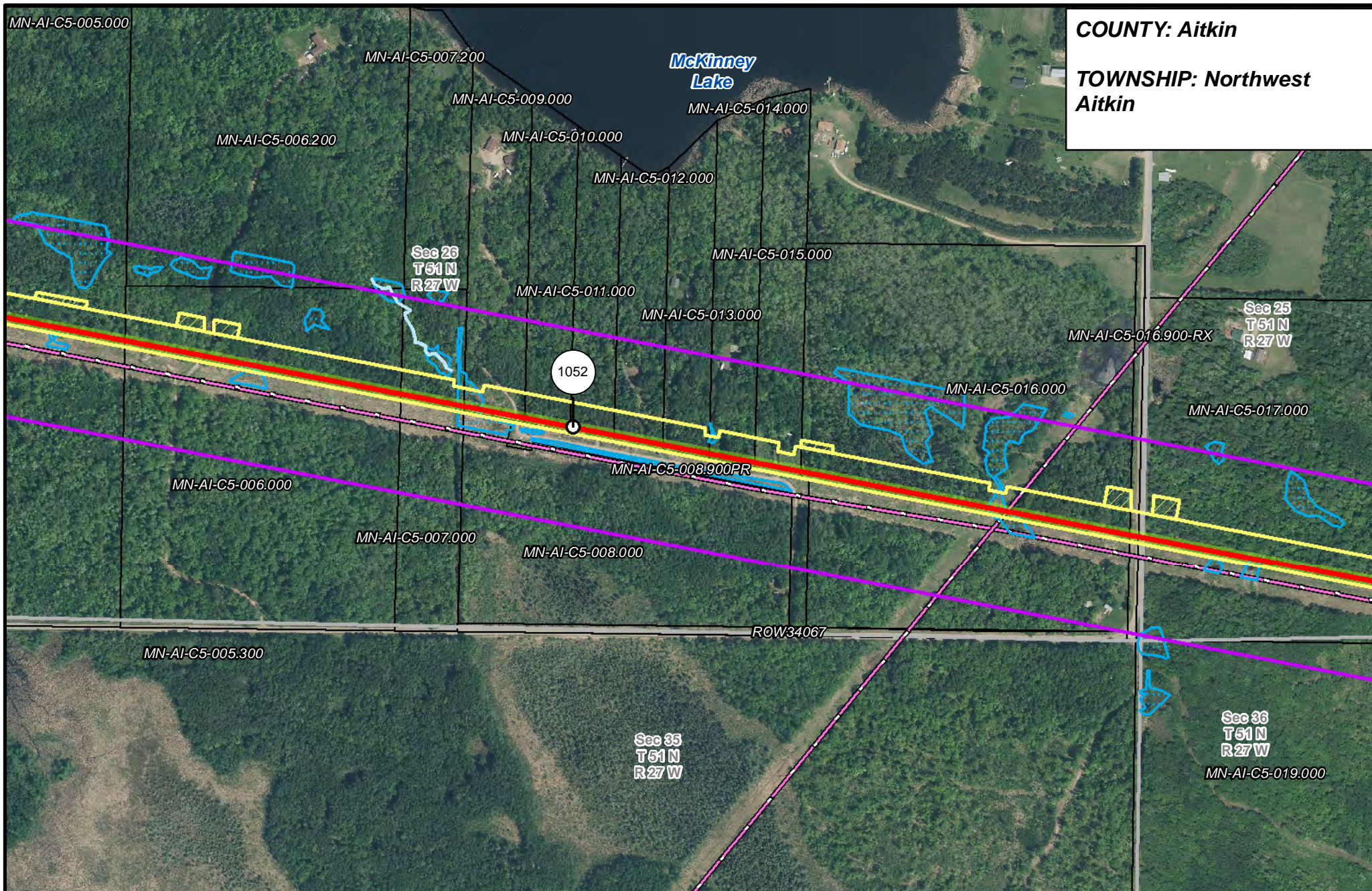
- PUC Designated Route
- ROW
- Line 3R Pipeline
- Valve Location
- Enbridge Pump Station
- Mile Post
- Temporary Workspace
- Additional Temporary Workspace
- Existing Enbridge Pipelines
- Existing Electric Transmission
- Existing Third Party Pipelines
- Surveyed Waterbodies
- ESA
- Surveyed Wetlands
- NWI Wetlands
- Tract Boundary
- MN Section Boundary
- Township/City Boundary
- County Boundary



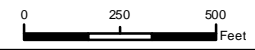
LINE 3 REPLACEMENT PIPELINE ROUTE

DRAWN: MLB CHECKED: ...
 DATE: August 31, 2018 SCALE: 1:5,000
 Map 299 of 378

COUNTY: Aitkin
TOWNSHIP: Northwest
Aitkin



- | | | | |
|-----------------------|--------------------------------|----------------------|------------------------|
| PUC Designated Route | Mile Post | Surveyed Waterbodies | Tract Boundary |
| ROW | Temporary Workspace | ESA | MN Section Boundary |
| Line 3R Pipeline | Additional Temporary Workspace | Surveyed Wetlands | Township/City Boundary |
| Valve Location | Existing Enbridge Pipelines | NWI Wetlands | County Boundary |
| Enbridge Pump Station | Existing Electric Transmission | | |
| | Existing Third Party Pipelines | | |

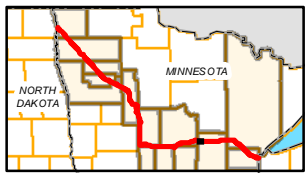
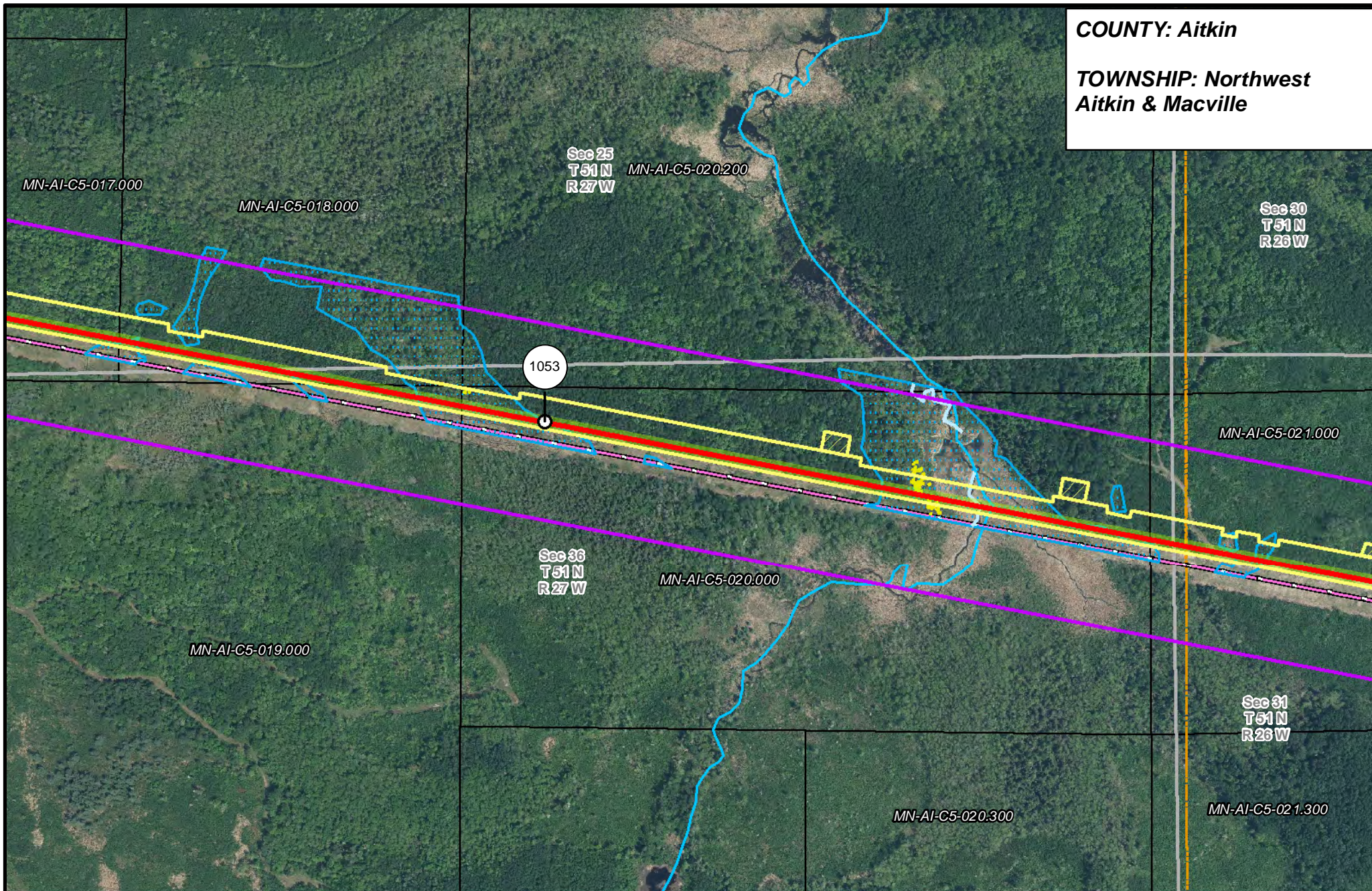


**LINE 3 REPLACEMENT
PIPELINE ROUTE**

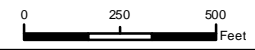
DRAWN: MLB CHECKED: ---
DATE: August 31, 2018 SCALE: 1:5,000

Map 300 of 378

COUNTY: Aitkin
TOWNSHIP: Northwest
 Aitkin & Macville



- | | | | |
|-----------------------|--------------------------------|----------------------|------------------------|
| PUC Designated Route | Mile Post | Surveyed Waterbodies | Tract Boundary |
| ROW | Temporary Workspace | ESA | MN Section Boundary |
| Line 3R Pipeline | Additional Temporary Workspace | Surveyed Wetlands | Township/City Boundary |
| Valve Location | Existing Enbridge Pipelines | NWI Wetlands | County Boundary |
| Enbridge Pump Station | Existing Electric Transmission | | |
| | Existing Third Party Pipelines | | |

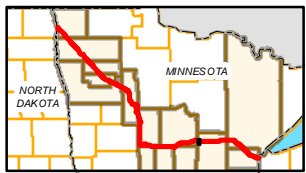
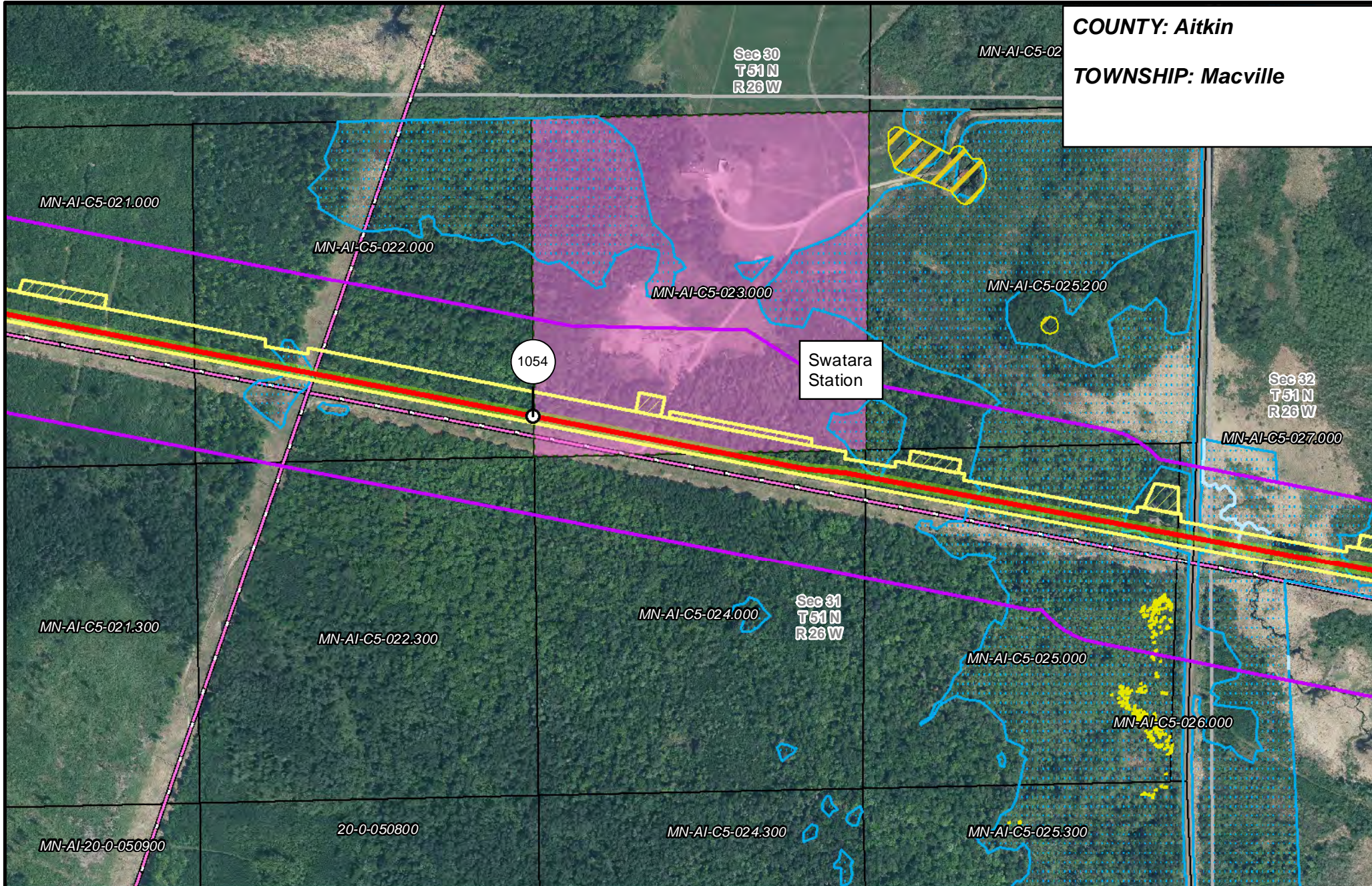


**LINE 3 REPLACEMENT
 PIPELINE ROUTE**

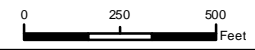
DRAWN: MLB CHECKED: ...
 DATE: August 31, 2018 SCALE: 1:6,000

Map 301 of 378

COUNTY: Aitkin
TOWNSHIP: Macville



- | | | | |
|-----------------------|--------------------------------|----------------------|------------------------|
| PUC Designated Route | Mile Post | Surveyed Waterbodies | Tract Boundary |
| ROW | Temporary Workspace | ESA | MN Section Boundary |
| Line 3R Pipeline | Additional Temporary Workspace | Surveyed Wetlands | Township/City Boundary |
| Valve Location | Existing Enbridge Pipelines | NWI Wetlands | County Boundary |
| Enbridge Pump Station | Existing Electric Transmission | | |
| | Existing Third Party Pipelines | | |

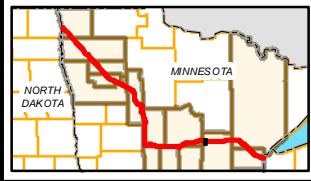
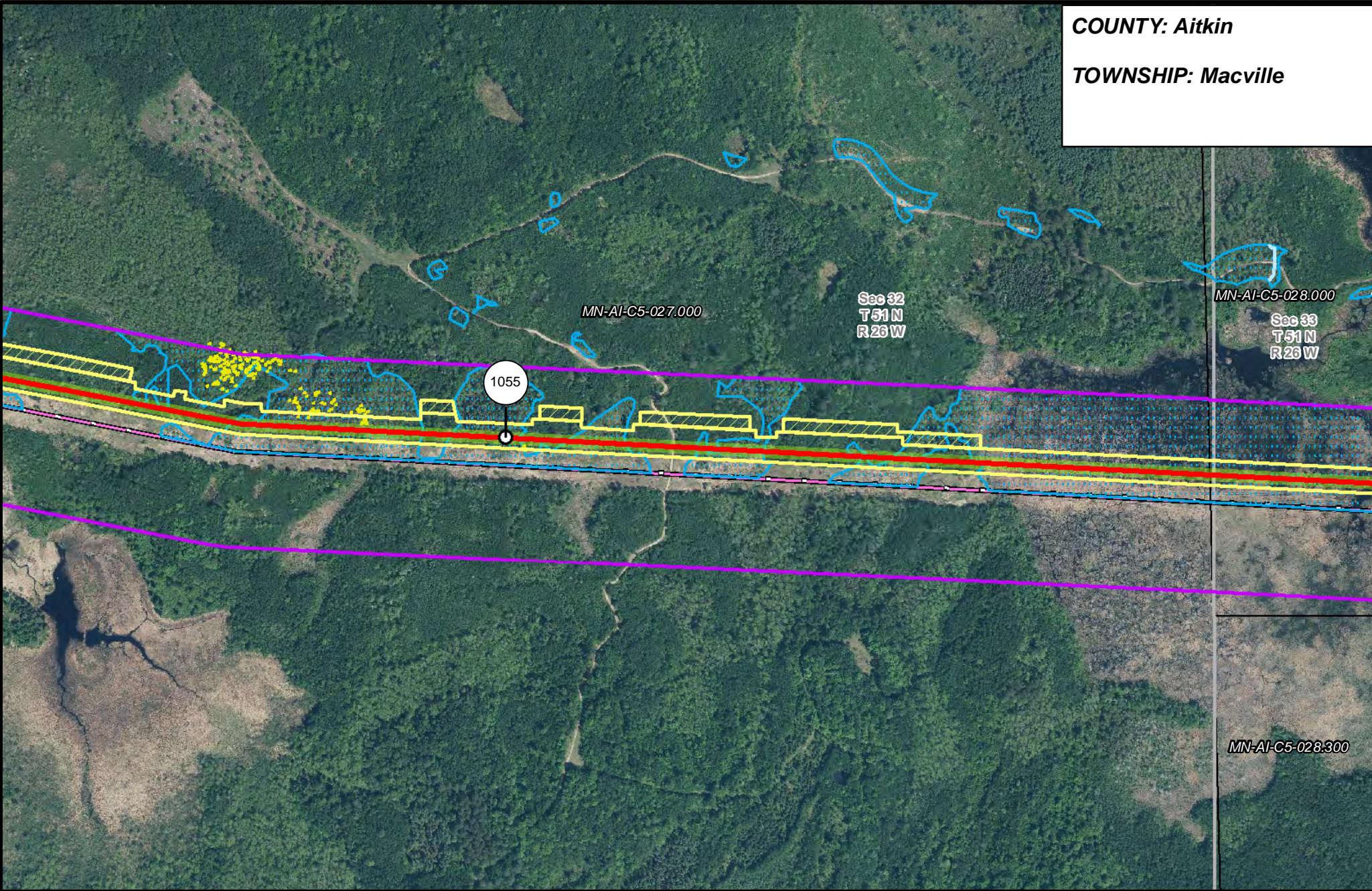


LINE 3 REPLACEMENT PIPELINE ROUTE

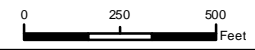
DRAWN: MLB CHECKED: ---
 DATE: August 31, 2018 SCALE: 1"=5,000'

Map 302 of 378

COUNTY: Aitkin
TOWNSHIP: Macville



- | | | | |
|-----------------------|--------------------------------|----------------------|------------------------|
| PUC Designated Route | Mile Post | Surveyed Waterbodies | Tract Boundary |
| ROW | Temporary Workspace | ESA | MN Section Boundary |
| Line 3R Pipeline | Additional Temporary Workspace | Surveyed Wetlands | Township/City Boundary |
| Valve Location | Existing Enbridge Pipelines | NWI Wetlands | County Boundary |
| Enbridge Pump Station | Existing Electric Transmission | | |
| | Existing Third Party Pipelines | | |



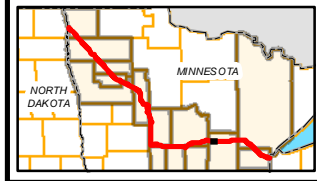
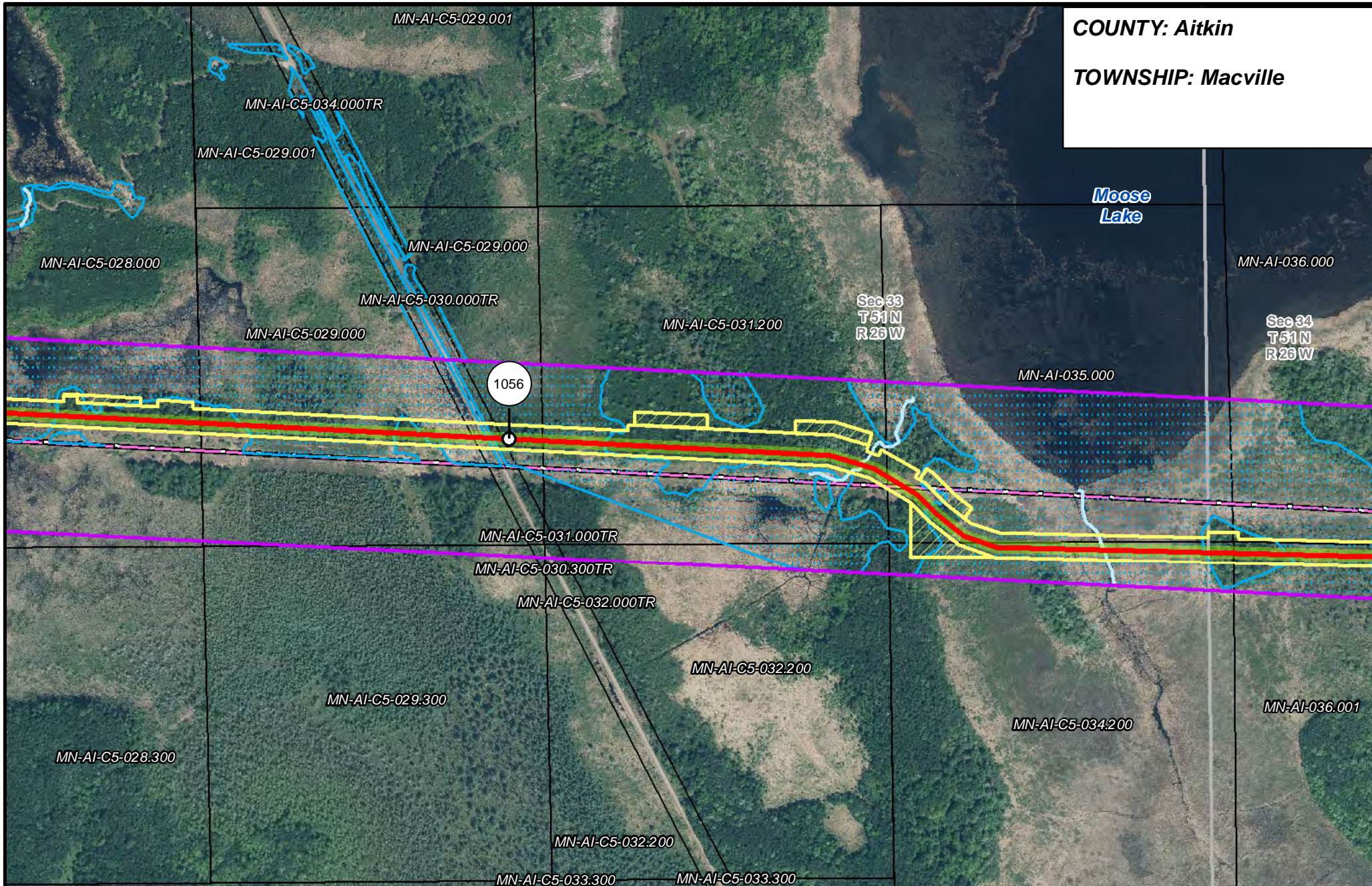
LINE 3 REPLACEMENT PIPELINE ROUTE

DRAWN: MLB CHECKED: ...
 DATE: August 31, 2018 SCALE: 1:5,000

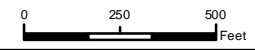
Map 303 of 378

COUNTY: Aitkin

TOWNSHIP: Macville



- PUC Designated Route
- Line 3R Pipeline
- Valve Location
- Enbridge Pump Station
- Mile Post
- Temporary Workspace
- Additional Temporary Workspace
- Existing Enbridge Pipelines
- Existing Electric Transmission
- Existing Third Party Pipelines
- Surveyed Waterbodies
- ESA
- Surveyed Wetlands
- NWI Wetlands
- Tract Boundary
- MN Section Boundary
- Township/City Boundary
- County Boundary

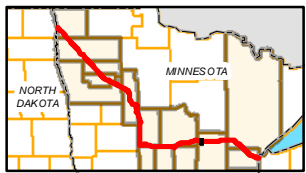
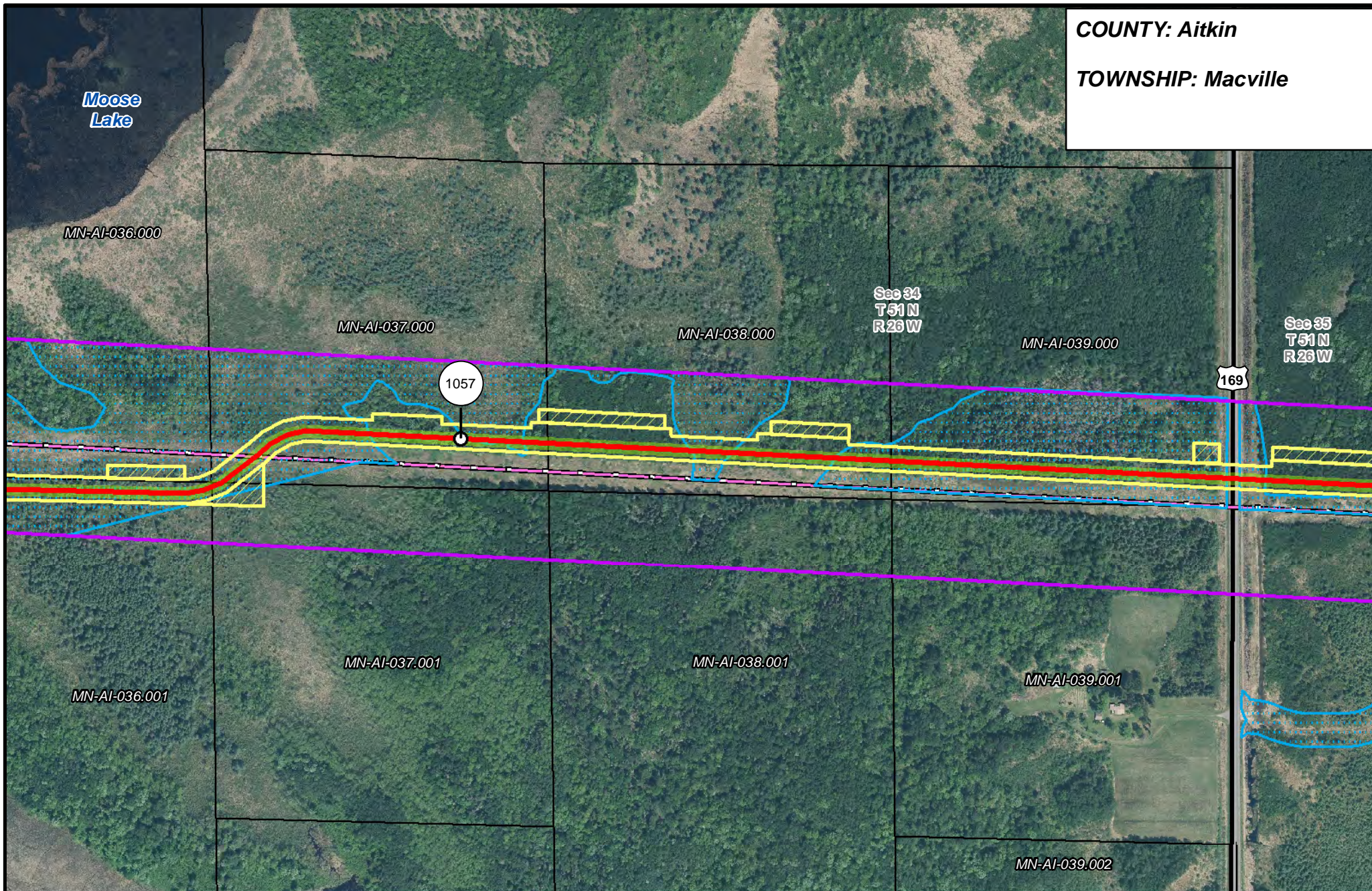


LINE 3 REPLACEMENT PIPELINE ROUTE

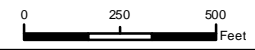
DRAWN: MLB CHECKED: ...
DATE: August 31, 2018 SCALE: 1:5000

Map 304 of 378

COUNTY: Aitkin
TOWNSHIP: Macville



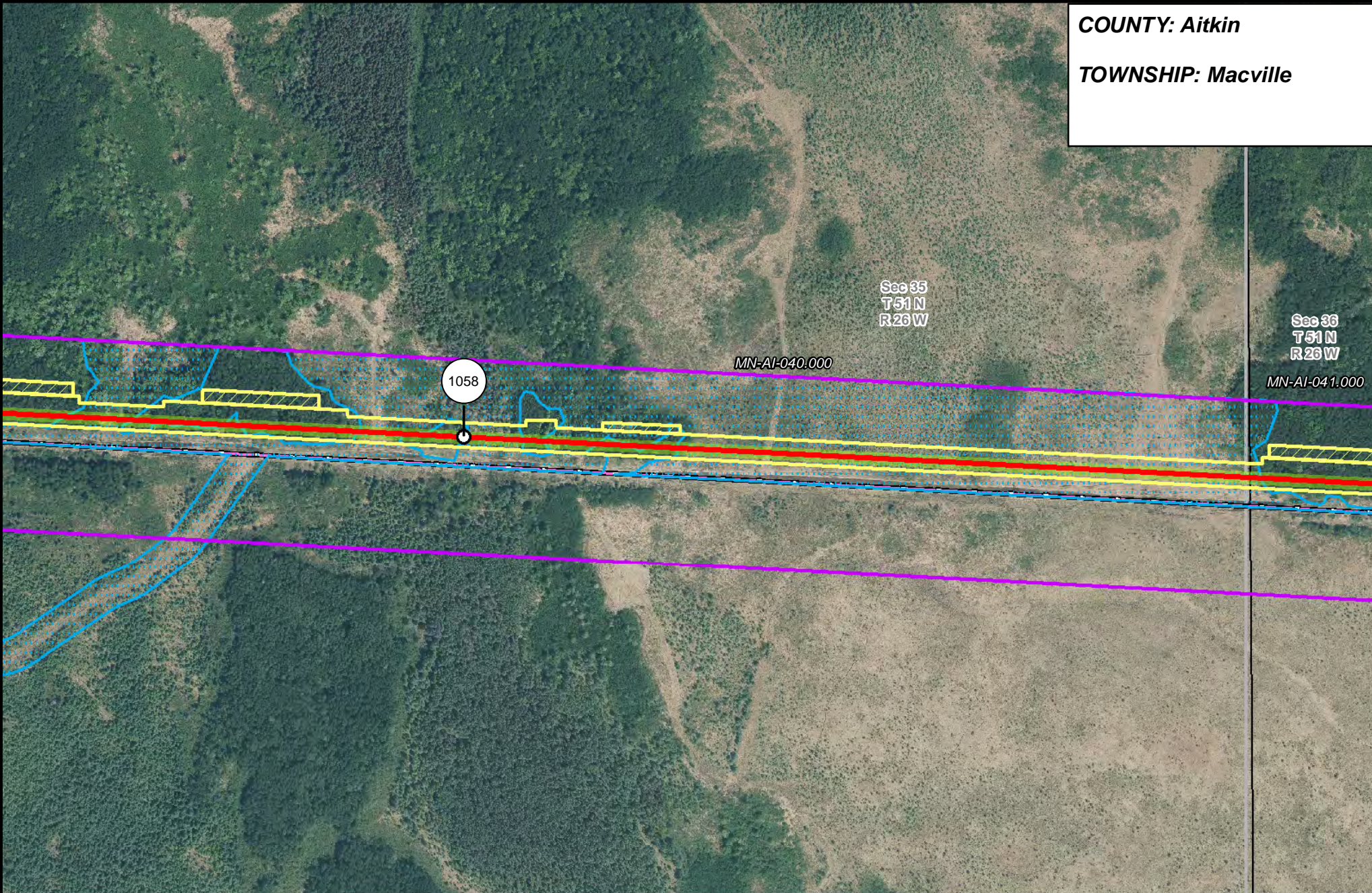
- | | | | |
|-----------------------|--------------------------------|----------------------|------------------------|
| PUC Designated Route | Mile Post | Surveyed Waterbodies | Tract Boundary |
| ROW | Temporary Workspace | ESA | MN Section Boundary |
| Line 3R Pipeline | Additional Temporary Workspace | Surveyed Wetlands | Township/City Boundary |
| Valve Location | Existing Enbridge Pipelines | NWI Wetlands | County Boundary |
| Enbridge Pump Station | Existing Electric Transmission | | |
| | Existing Third Party Pipelines | | |



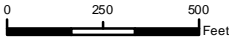
**LINE 3 REPLACEMENT
PIPELINE ROUTE**

DRAWN: MLB CHECKED: ...
DATE: August 31, 2018 SCALE: 1:6,000
Map 305 of 378

COUNTY: Aitkin
TOWNSHIP: Macville



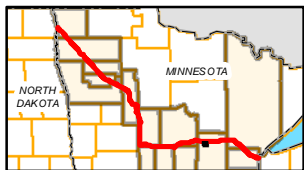
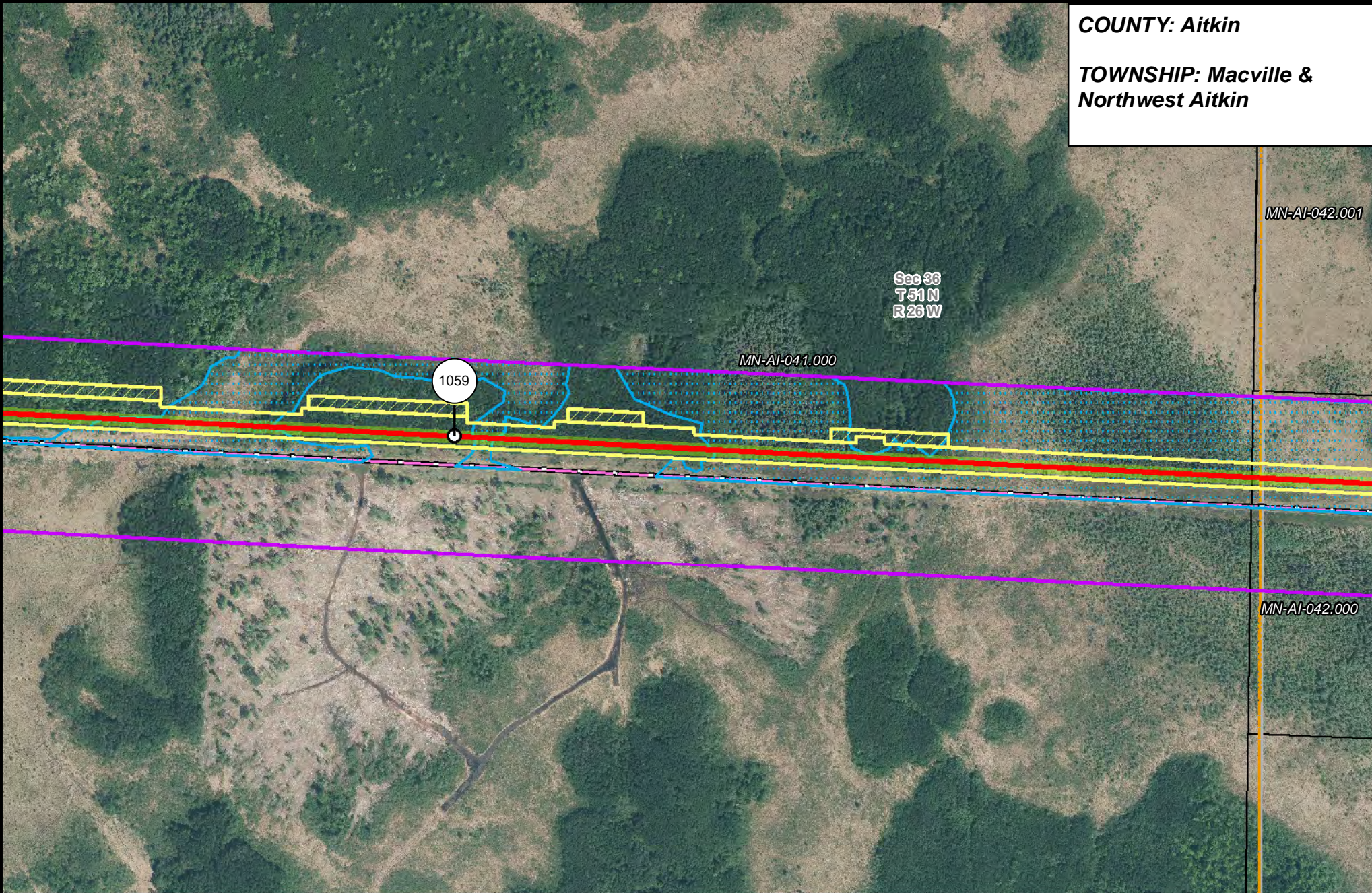
- | | | | |
|-----------------------|--------------------------------|----------------------|------------------------|
| PUC Designated Route | Mile Post | Surveyed Waterbodies | Tract Boundary |
| ROW | Temporary Workspace | ESA | MN Section Boundary |
| Line 3R Pipeline | Additional Temporary Workspace | Surveyed Wetlands | Township/City Boundary |
| Valve Location | Existing Enbridge Pipelines | NWI Wetlands | County Boundary |
| Enbridge Pump Station | Existing Electric Transmission | | |
| | Existing Third Party Pipelines | | |



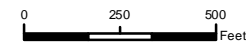
**LINE 3 REPLACEMENT
PIPELINE ROUTE**

DRAWN: MLB CHECKED: ...
DATE: August 31, 2018 SCALE: 1:5,000
Map 306 of 378

COUNTY: Aitkin
TOWNSHIP: Macville & Northwest Aitkin



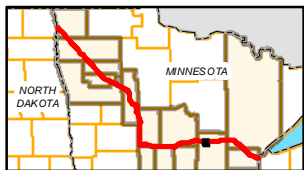
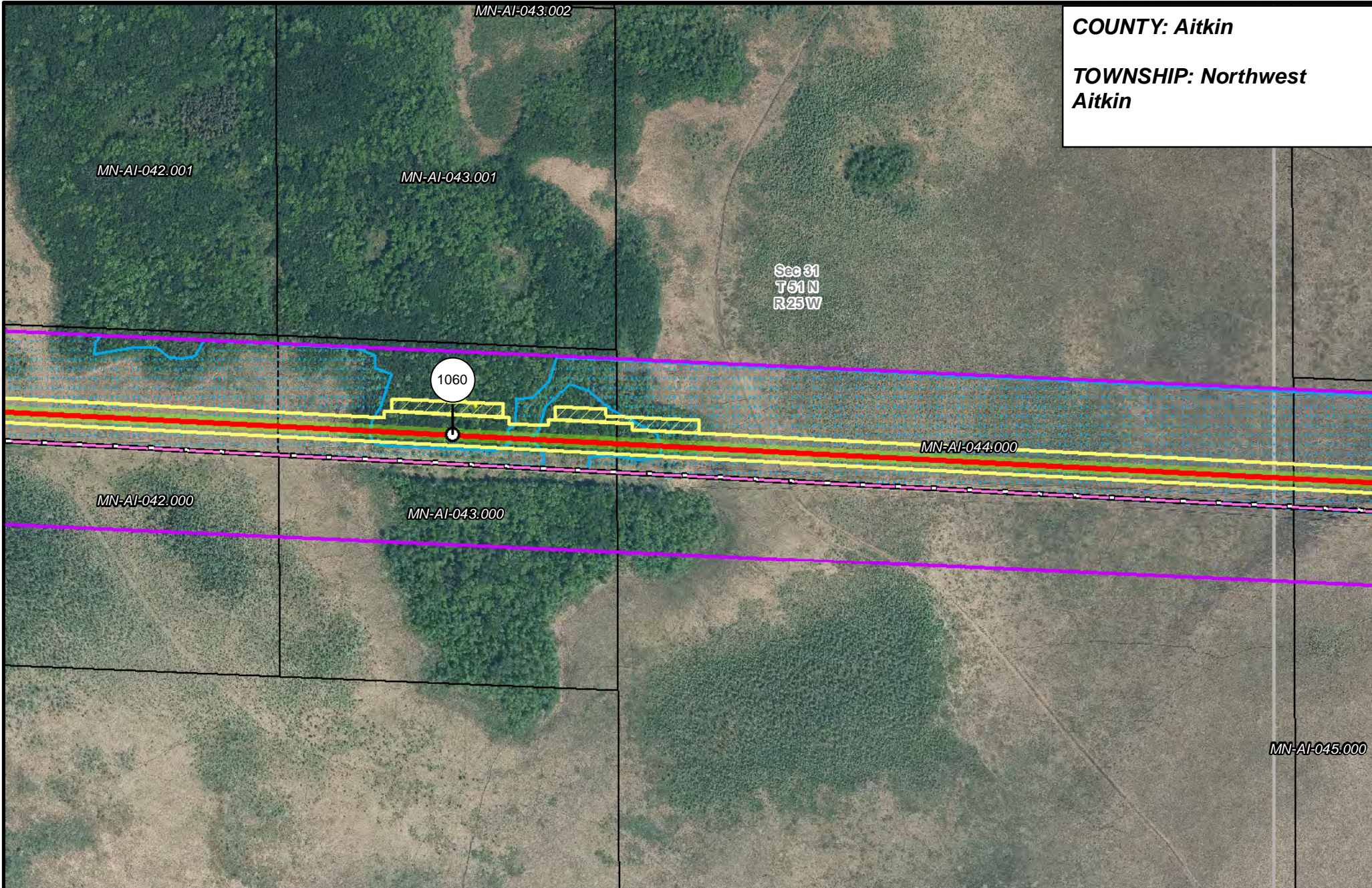
- | | | | |
|-----------------------|--------------------------------|----------------------|------------------------|
| PUC Designated Route | Mile Post | Surveyed Waterbodies | Tract Boundary |
| ROW | Temporary Workspace | ESA | MN Section Boundary |
| Line 3R Pipeline | Additional Temporary Workspace | Surveyed Wetlands | Township/City Boundary |
| Valve Location | Existing Enbridge Pipelines | NWI Wetlands | County Boundary |
| Enbridge Pump Station | Existing Electric Transmission | | |
| | Existing Third Party Pipelines | | |



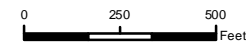
LINE 3 REPLACEMENT PIPELINE ROUTE

DRAWN: MLB CHECKED: ...
 DATE: August 31, 2018 SCALE: 1:5,000
 Map 307 of 378

COUNTY: Aitkin
TOWNSHIP: Northwest Aitkin



- | | | | |
|-----------------------|--------------------------------|--------------------------------|------------------------|
| PUC Designated Route | Mile Post | Surveyed Waterbodies | Tract Boundary |
| ROW | Temporary Workspace | ESA | MN Section Boundary |
| Line 3R Pipeline | Additional Temporary Workspace | Surveyed Wetlands | Township/City Boundary |
| Valve Location | Existing Enbridge Pipelines | NWI Wetlands | County Boundary |
| Enbridge Pump Station | Existing Electric Transmission | Existing Third Party Pipelines | |



LINE 3 REPLACEMENT PIPELINE ROUTE

DRAWN: MLB CHECKED: ...
 DATE: August 31, 2018 SCALE: 1:5,000
 Map 308 of 378