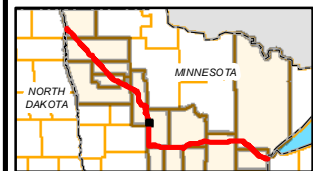
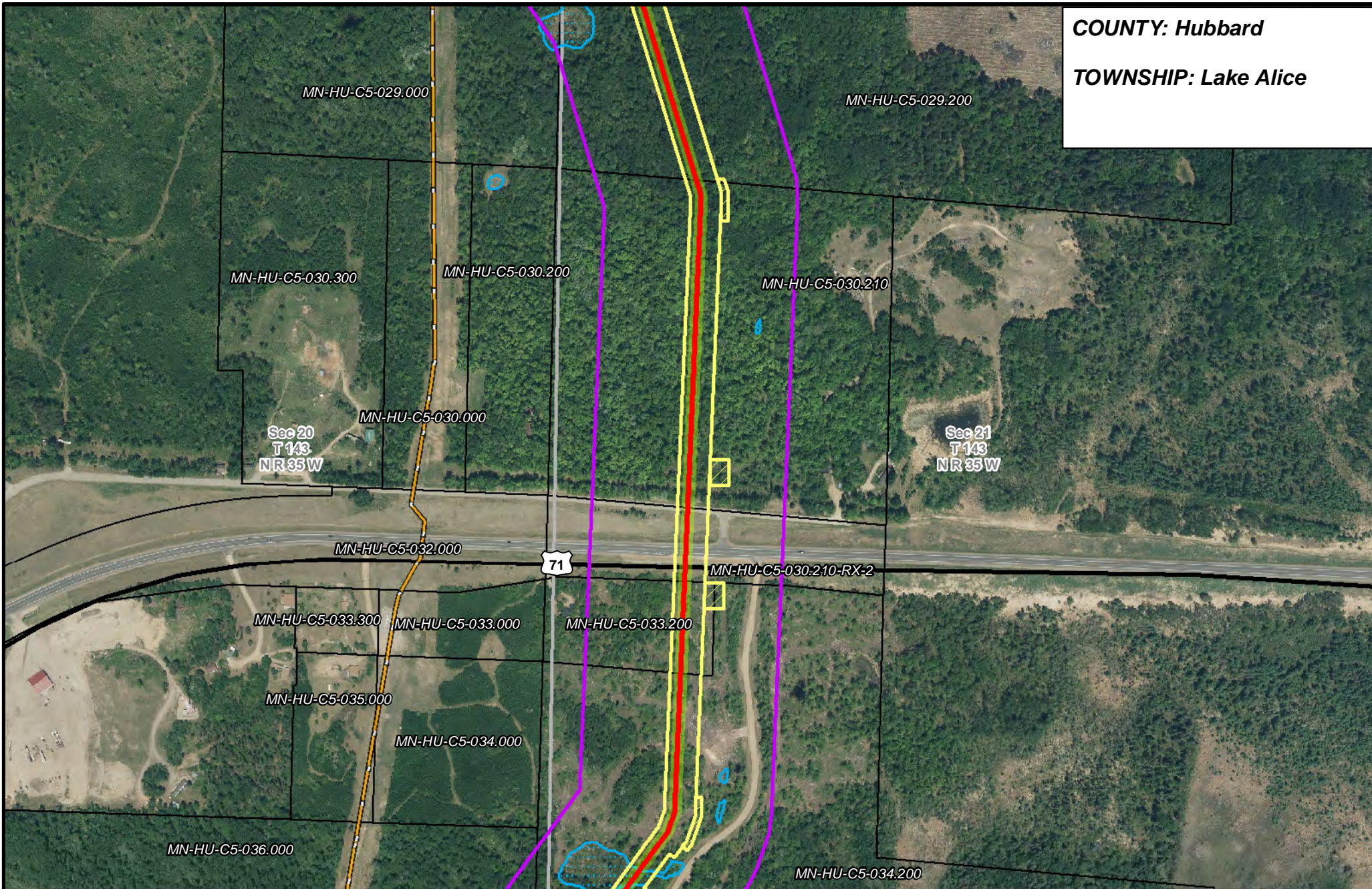
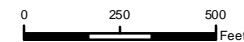


COUNTY: Hubbard
TOWNSHIP: Lake Alice



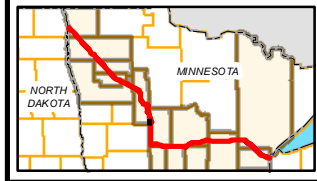
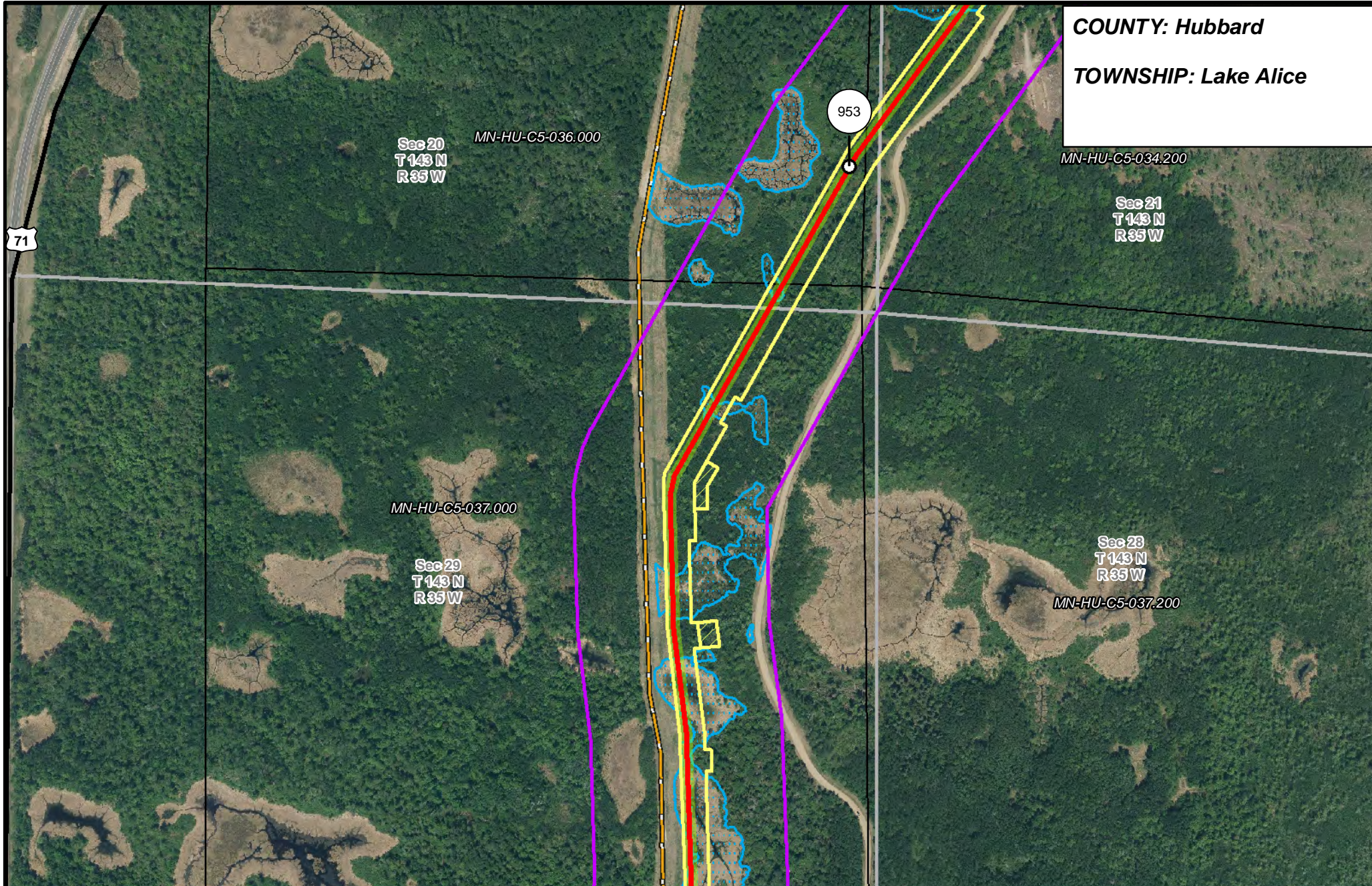
- | | | | |
|-----------------------|--------------------------------|----------------------|------------------------|
| PUC Designated Route | Mile Post | Surveyed Waterbodies | Tract Boundary |
| ROW | Temporary Workspace | ESA | MN Section Boundary |
| Line 3R Pipeline | Additional Temporary Workspace | Surveyed Wetlands | Township/City Boundary |
| Valve Location | Existing Enbridge Pipelines | NWI Wetlands | County Boundary |
| Enbridge Pump Station | Existing Electric Transmission | | |
| | Existing Third Party Pipelines | | |



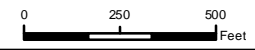
**LINE 3 REPLACEMENT
PIPELINE ROUTE**

DRAWN: MLB CHECKED: --
DATE: August 31, 2018 SCALE: 1:5,000
Map 186 of 378

COUNTY: Hubbard
TOWNSHIP: Lake Alice



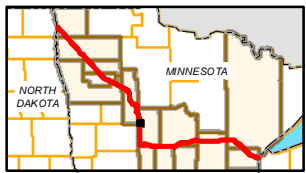
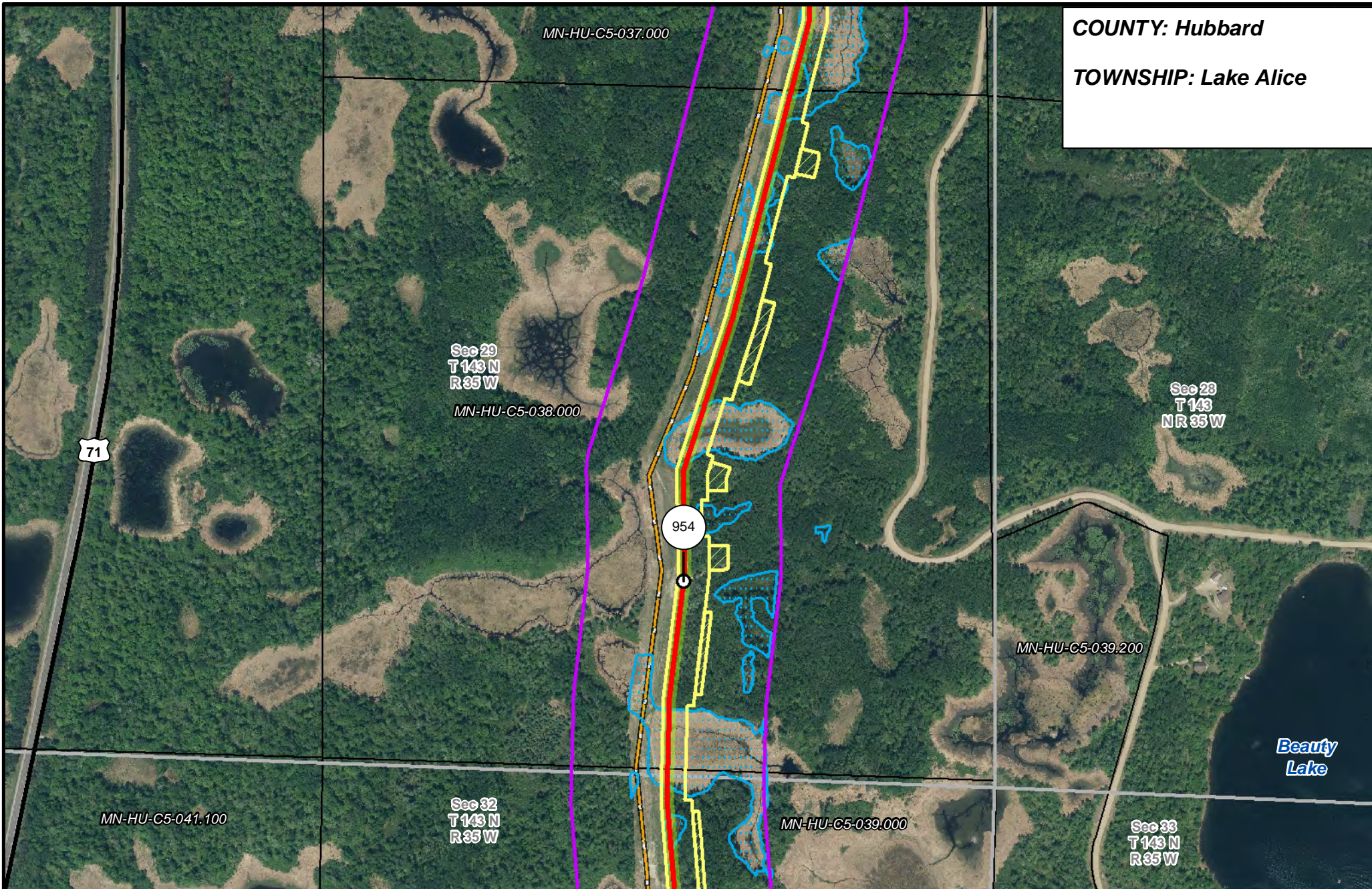
- | | | | |
|-----------------------|--------------------------------|----------------------|------------------------|
| PUC Designated Route | Mile Post | Surveyed Waterbodies | Tract Boundary |
| ROW | Temporary Workspace | ESA | MN Section Boundary |
| Line 3R Pipeline | Additional Temporary Workspace | Surveyed Wetlands | Township/City Boundary |
| Valve Location | Existing Enbridge Pipelines | NWI Wetlands | County Boundary |
| Enbridge Pump Station | Existing Electric Transmission | | |
| | Existing Third Party Pipelines | | |



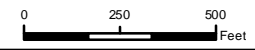
**LINE 3 REPLACEMENT
PIPELINE ROUTE**

DRAWN: MLB CHECKED: --
DATE: August 31, 2018 SCALE: 1:5,000
Map 187 of 378

COUNTY: Hubbard
TOWNSHIP: Lake Alice



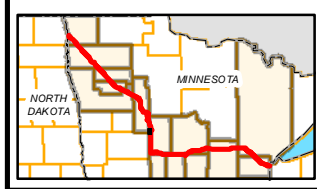
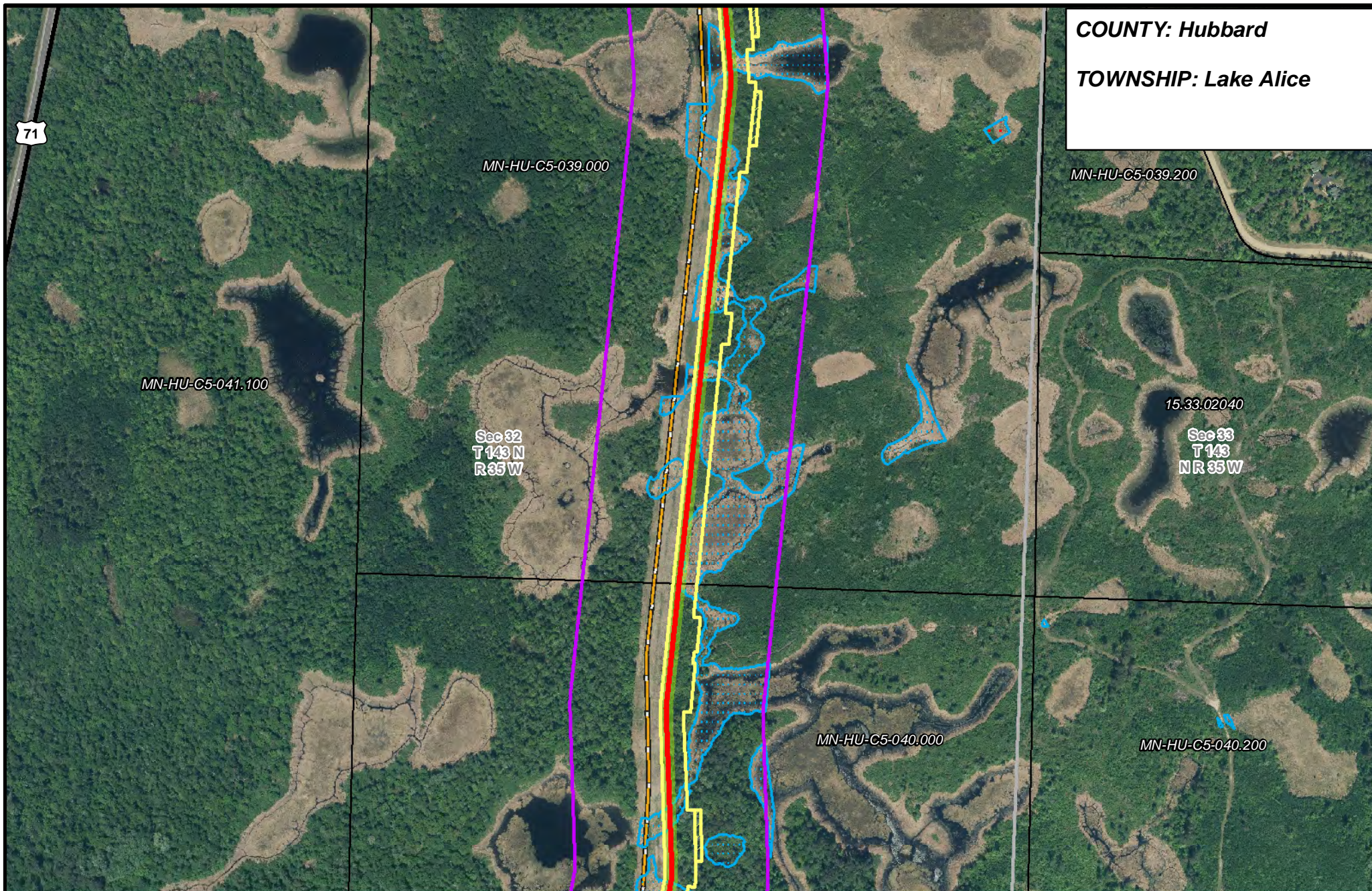
- | | | | |
|-----------------------|--------------------------------|--------------------------------|------------------------|
| PUC Designated Route | Mile Post | Surveyed Waterbodies | Tract Boundary |
| ROW | Temporary Workspace | ESA | MN Section Boundary |
| Line 3R Pipeline | Additional Temporary Workspace | Surveyed Wetlands | Township/City Boundary |
| Valve Location | Existing Enbridge Pipelines | NWI Wetlands | County Boundary |
| Enbridge Pump Station | Existing Electric Transmission | Existing Third Party Pipelines | |



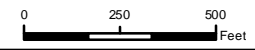
**LINE 3 REPLACEMENT
 PIPELINE ROUTE**

DRAWN: MLB CHECKED: --
 DATE: August 31, 2018 SCALE: 1:5,000
 Map 188 of 378

COUNTY: Hubbard
TOWNSHIP: Lake Alice



- | | | | |
|-----------------------|--------------------------------|----------------------|------------------------|
| PUC Designated Route | Mile Post | Surveyed Waterbodies | Tract Boundary |
| ROW | Temporary Workspace | ESA | MN Section Boundary |
| Line 3R Pipeline | Additional Temporary Workspace | Surveyed Wetlands | Township/City Boundary |
| Valve Location | Existing Enbridge Pipelines | NWI Wetlands | County Boundary |
| Enbridge Pump Station | Existing Electric Transmission | | |
| | Existing Third Party Pipelines | | |

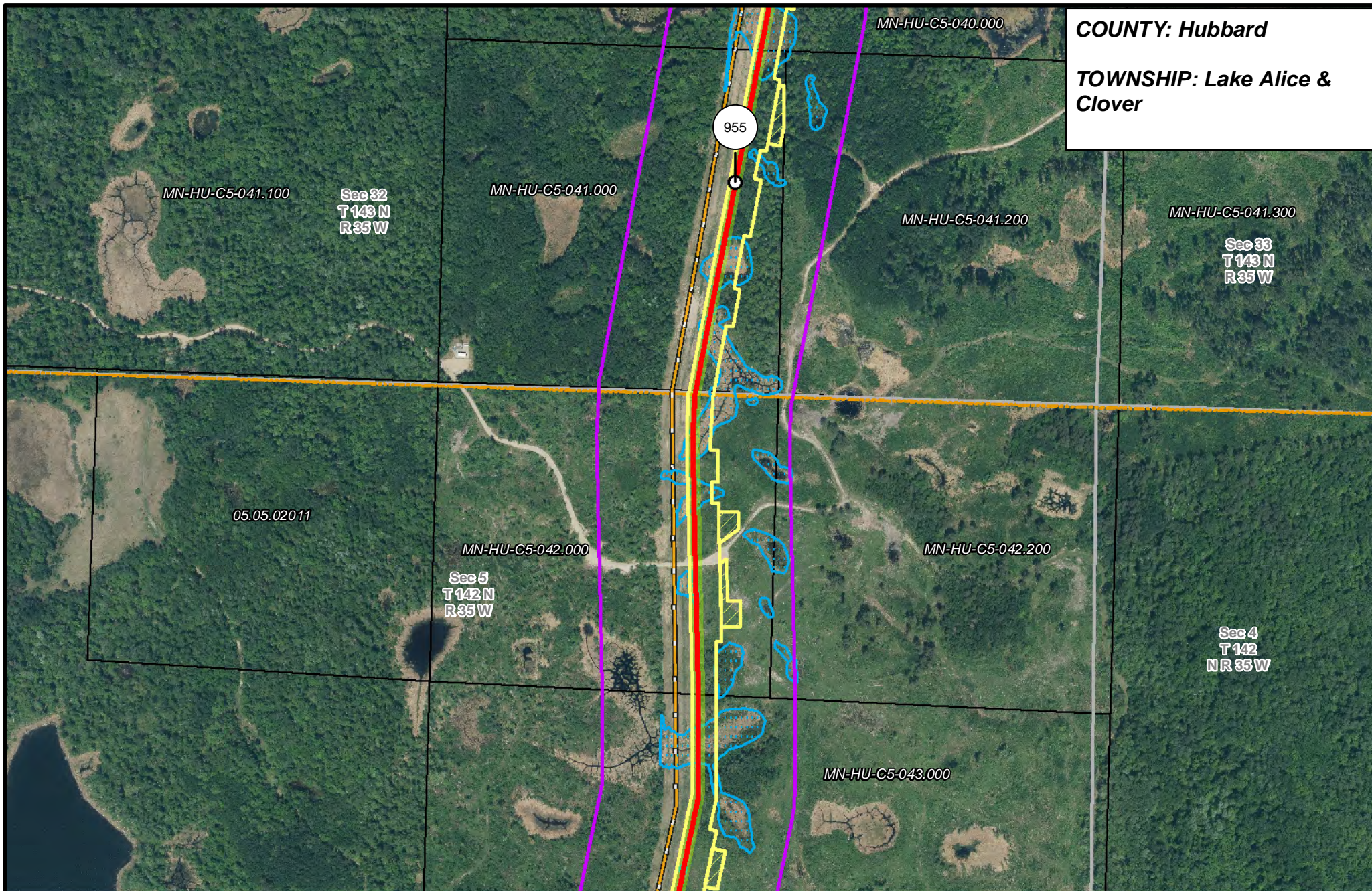


LINE 3 REPLACEMENT PIPELINE ROUTE

DRAWN: MLB CHECKED: --
 DATE: August 31, 2018 SCALE: 1:5,000

Map 189 of 378

COUNTY: Hubbard
TOWNSHIP: Lake Alice & Clover



MN-HU-C5-041.100

Sec 32
T 143 N
R 35 W

MN-HU-C5-041.000

MN-HU-C5-040.000

MN-HU-C5-041.200

MN-HU-C5-041.300

Sec 33
T 143 N
R 35 W

05.05.02011

MN-HU-C5-042.000

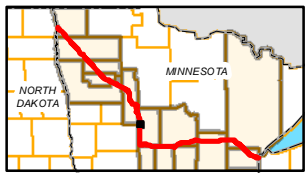
Sec 5
T 142 N
R 35 W

MN-HU-C5-042.200

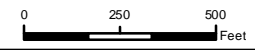
Sec 4
T 142
N R 35 W

MN-HU-C5-043.000

955



- PUC Designated Route
- Mile Post
- Surveyed Waterbodies
- Tract Boundary
- ROW
- Temporary Workspace
- ESA
- MN Section Boundary
- Line 3R Pipeline
- Additional Temporary Workspace
- Surveyed Wetlands
- Township/City Boundary
- Valve Location
- Existing Enbridge Pipelines
- NWI Wetlands
- County Boundary
- Enbridge Pump Station
- Existing Electric Transmission
- Existing Third Party Pipelines

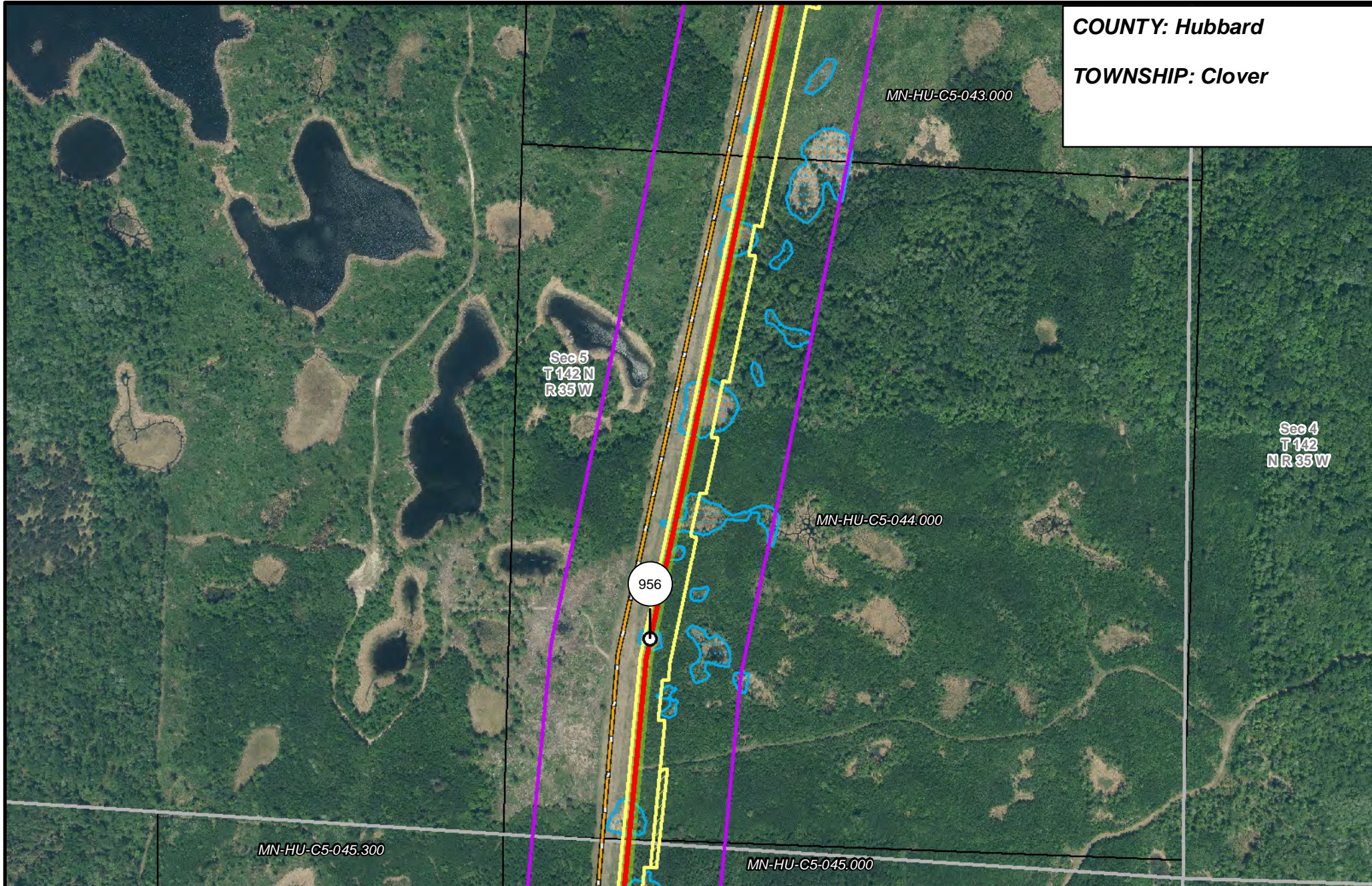


**LINE 3 REPLACEMENT
PIPELINE ROUTE**

DRAWN: MLB CHECKED: --
 DATE: August 31, 2018 SCALE: 1:5,000
 Map 190 of 378

COUNTY: Hubbard

TOWNSHIP: Clover



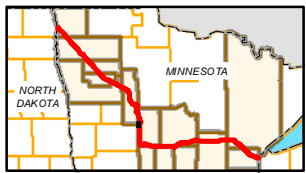
Sec 5
T142 N
R35 W

Sec 4
T142
NR 35 W

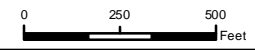
956

MN-HU-C5-045.300

MN-HU-C5-045.000



- PUC Designated Route
- ROW
- Line 3R Pipeline
- Valve Location
- Enbridge Pump Station
- Mile Post
- Temporary Workspace
- Additional Temporary Workspace
- Existing Enbridge Pipelines
- Existing Electric Transmission
- Existing Third Party Pipelines
- Surveyed Waterbodies
- ESA
- Surveyed Wetlands
- NWI Wetlands
- Tract Boundary
- MN Section Boundary
- Township/City Boundary
- County Boundary



**LINE 3 REPLACEMENT
PIPELINE ROUTE**

DRAWN: MLB CHECKED: --
 DATE: August 31, 2018 SCALE: 1:5,000
 Map 191 of 378

COUNTY: Hubbard

TOWNSHIP: Clover

MN-HU-C5-045.300

MN-HU-C5-045.000

Sec 8
T142 N
R35 W

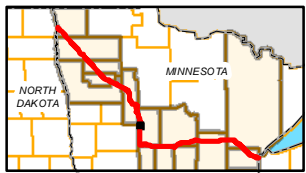
MN-HU-C5-046.300

MN-HU-C5-046.000

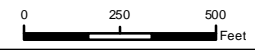
MN-HU-C5-048.000

MN-HU-C5-047.000

Sec 9
T142 N
R35 W



- PUC Designated Route
- ROW
- Line 3R Pipeline
- Valve Location
- Enbridge Pump Station
- Mile Post
- Temporary Workspace
- Additional Temporary Workspace
- Existing Enbridge Pipelines
- Existing Electric Transmission
- Existing Third Party Pipelines
- Surveyed Waterbodies
- ESA
- Surveyed Wetlands
- NWI Wetlands
- Tract Boundary
- MN Section Boundary
- Township/City Boundary
- County Boundary

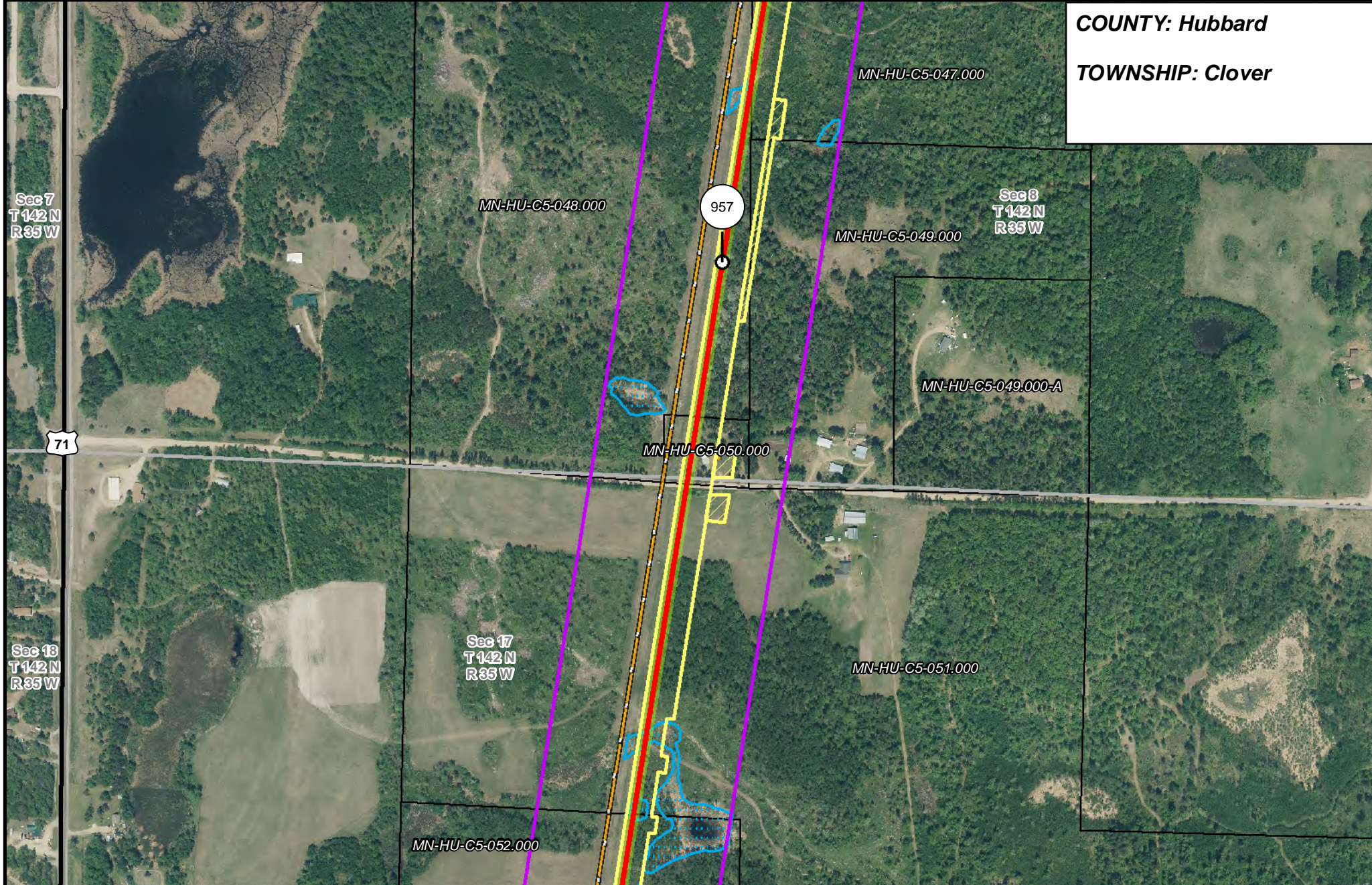


LINE 3 REPLACEMENT PIPELINE ROUTE

DRAWN: MLB CHECKED: --
DATE: August 31, 2018 SCALE: 1:5,000
Map 192 of 378

COUNTY: Hubbard

TOWNSHIP: Clover



Sec 7
T142 N
R35 W

MN-HU-C5-048.000

MN-HU-C5-047.000

Sec 8
T142 N
R35 W

MN-HU-C5-049.000

MN-HU-C5-049.000-A

MN-HU-C5-050.000

Sec 13
T142 N
R35 W

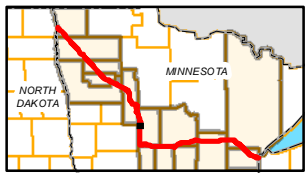
Sec 17
T142 N
R35 W

MN-HU-C5-051.000

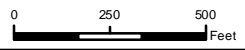
MN-HU-C5-052.000

957

71



- PUC Designated Route
- ROW
- Line 3R Pipeline
- Valve Location
- Enbridge Pump Station
- Mile Post
- Temporary Workspace
- Additional Temporary Workspace
- Existing Enbridge Pipelines
- Existing Electric Transmission
- Existing Third Party Pipelines
- Surveyed Waterbodies
- ESA
- Surveyed Wetlands
- NWI Wetlands
- Tract Boundary
- MN Section Boundary
- Township/City Boundary
- County Boundary

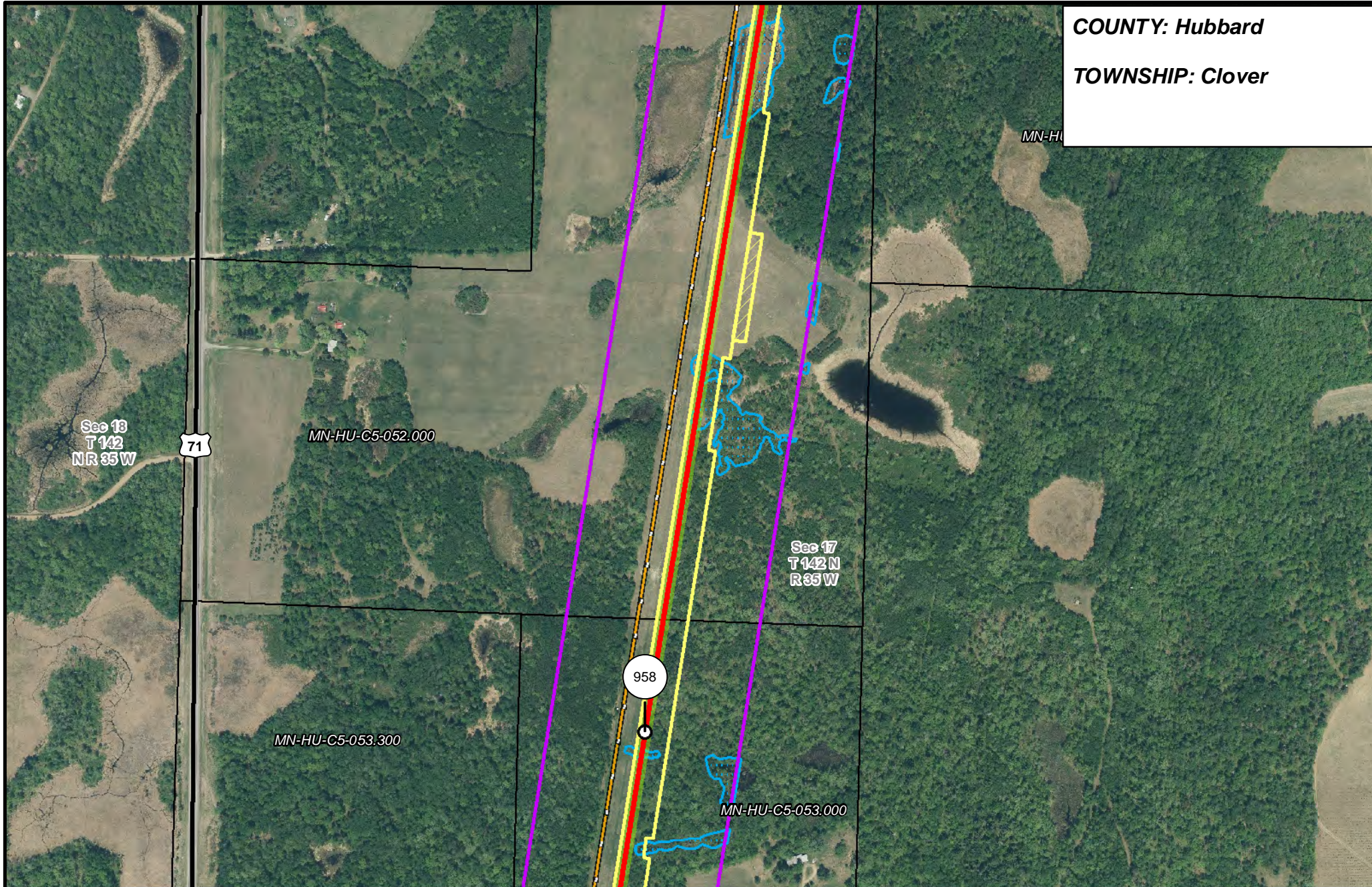


**LINE 3 REPLACEMENT
PIPELINE ROUTE**

DRAWN: MLB CHECKED: --
 DATE: August 31, 2018 SCALE: 1:5,000
 Map 193 of 378

COUNTY: Hubbard

TOWNSHIP: Clover



Sec 18
T142
NR 35 W

71

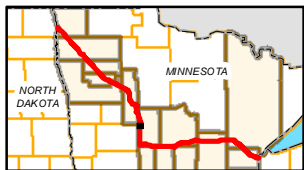
MN-HU-C5-052.000

Sec 17
T142 N
R35 W

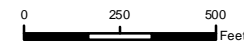
MN-HU-C5-053.300

958

MN-HU-C5-053.000



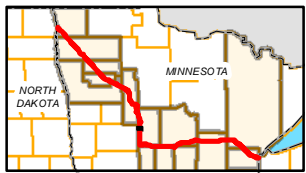
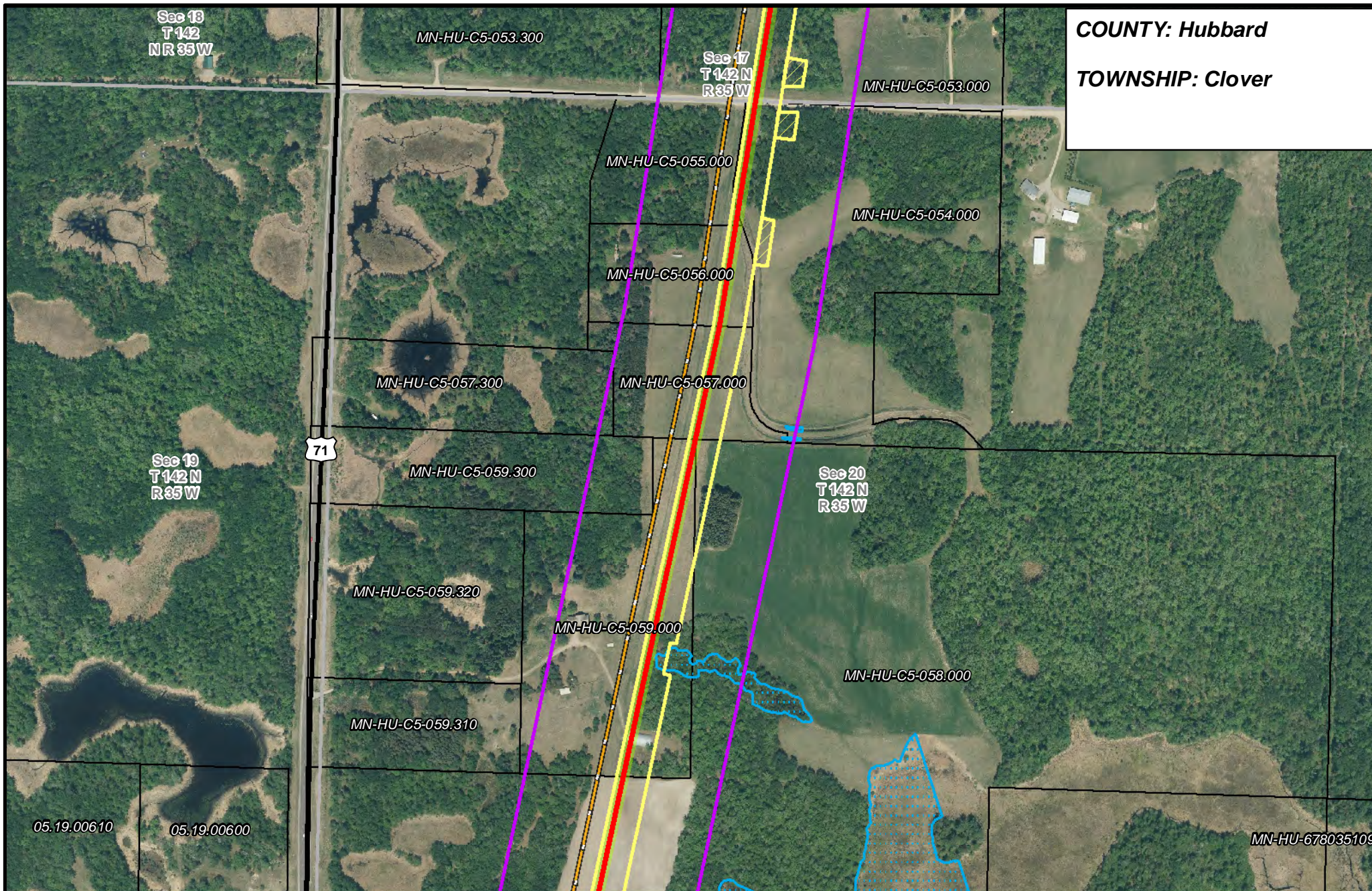
- PUC Designated Route
- ROW
- Line 3R Pipeline
- Valve Location
- Enbridge Pump Station
- Mile Post
- Temporary Workspace
- Additional Temporary Workspace
- Existing Enbridge Pipelines
- Existing Electric Transmission
- Existing Third Party Pipelines
- Surveyed Waterbodies
- ESA
- Surveyed Wetlands
- NWI Wetlands
- Tract Boundary
- MN Section Boundary
- Township/City Boundary
- County Boundary



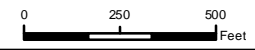
LINE 3 REPLACEMENT PIPELINE ROUTE

DRAWN: MLB CHECKED: --
DATE: August 31, 2018 SCALE: 1:5,000
Map 194 of 378

COUNTY: Hubbard
TOWNSHIP: Clover



- | | | | |
|-----------------------|--------------------------------|----------------------|------------------------|
| PUC Designated Route | Mile Post | Surveyed Waterbodies | Tract Boundary |
| ROW | Temporary Workspace | ESA | MN Section Boundary |
| Line 3R Pipeline | Additional Temporary Workspace | Surveyed Wetlands | Township/City Boundary |
| Valve Location | Existing Enbridge Pipelines | NWI Wetlands | County Boundary |
| Enbridge Pump Station | Existing Electric Transmission | | |
| | Existing Third Party Pipelines | | |

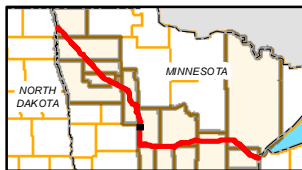
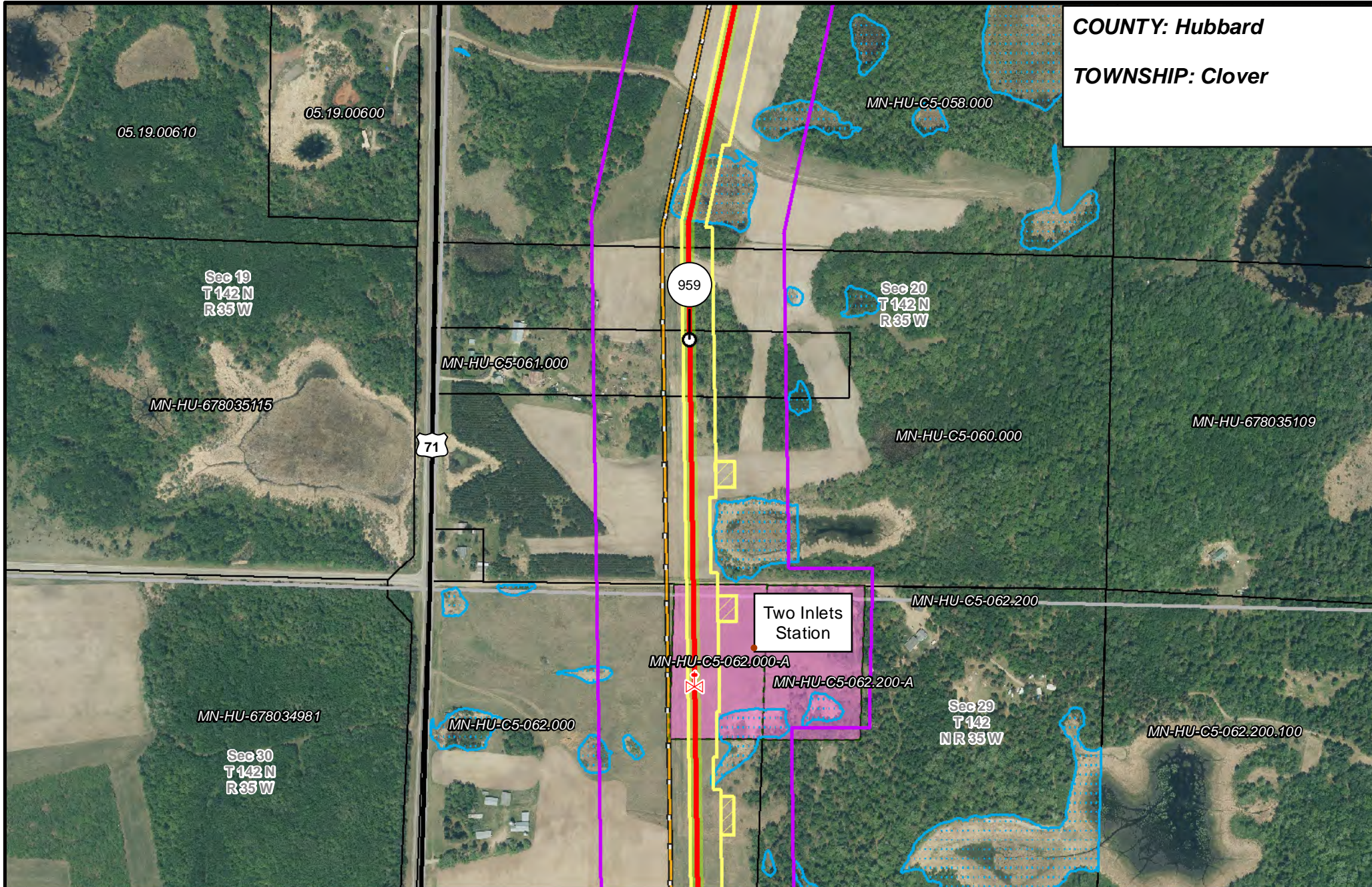


LINE 3 REPLACEMENT PIPELINE ROUTE

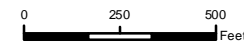
DRAWN: MLB CHECKED: --
 DATE: August 31, 2018 SCALE: 1:5,000
 Map 195 of 378

COUNTY: Hubbard

TOWNSHIP: Clover



- PUC Designated Route
- ROW
- Line 3R Pipeline
- Valve Location
- Enbridge Pump Station
- Mile Post
- Temporary Workspace
- Additional Temporary Workspace
- Existing Enbridge Pipelines
- Existing Electric Transmission
- Existing Third Party Pipelines
- Surveyed Waterbodies
- ESA
- Surveyed Wetlands
- NWI Wetlands
- Tract Boundary
- MN Section Boundary
- Township/City Boundary
- County Boundary

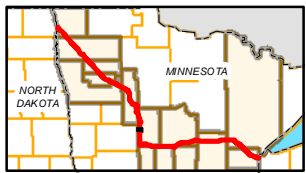
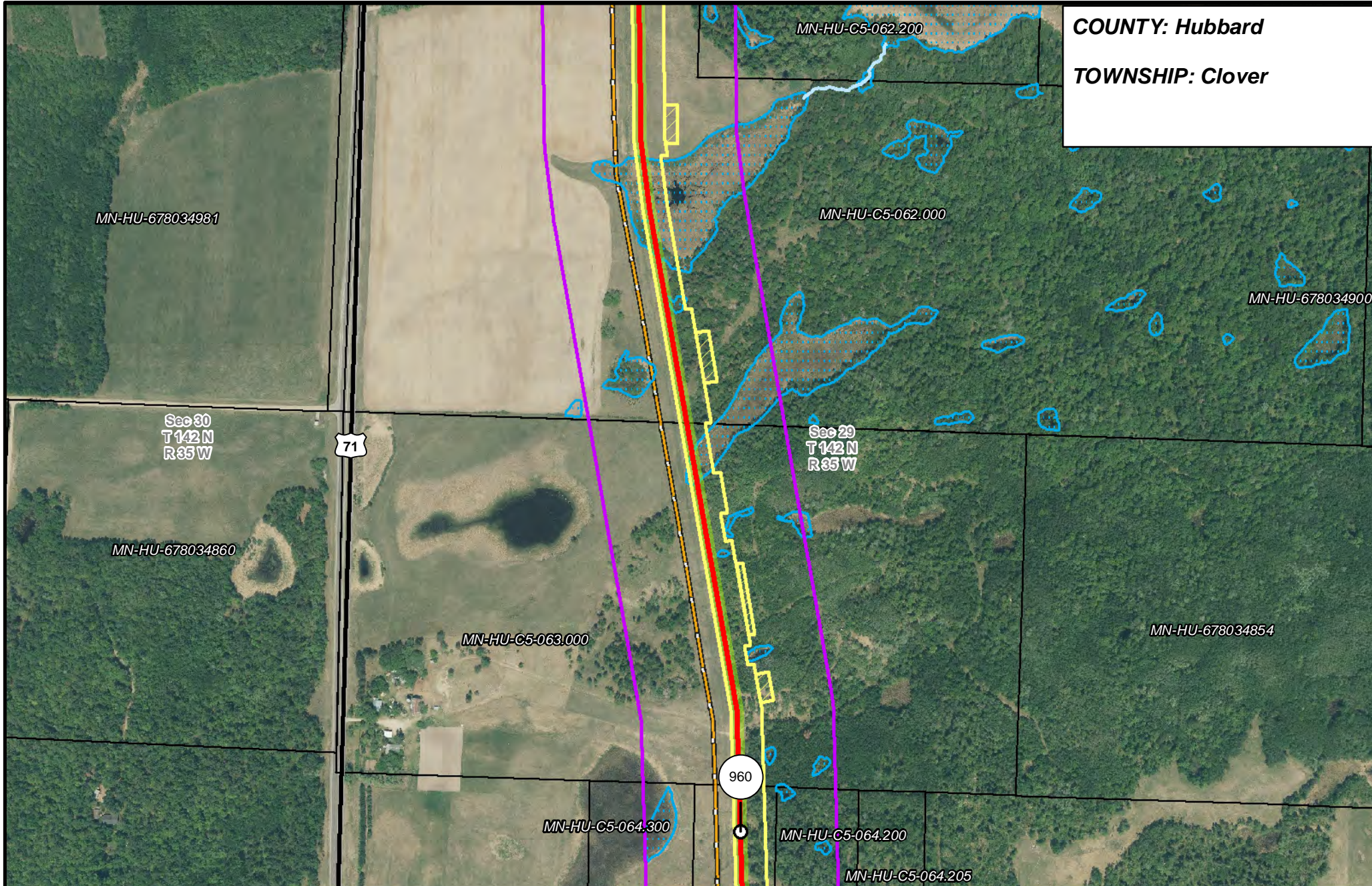


LINE 3 REPLACEMENT PIPELINE ROUTE

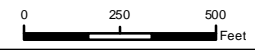
DRAWN: MLB CHECKED: --
DATE: August 31, 2018 SCALE: 1:5,000
Map 196 of 378

COUNTY: Hubbard

TOWNSHIP: Clover



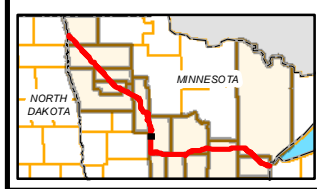
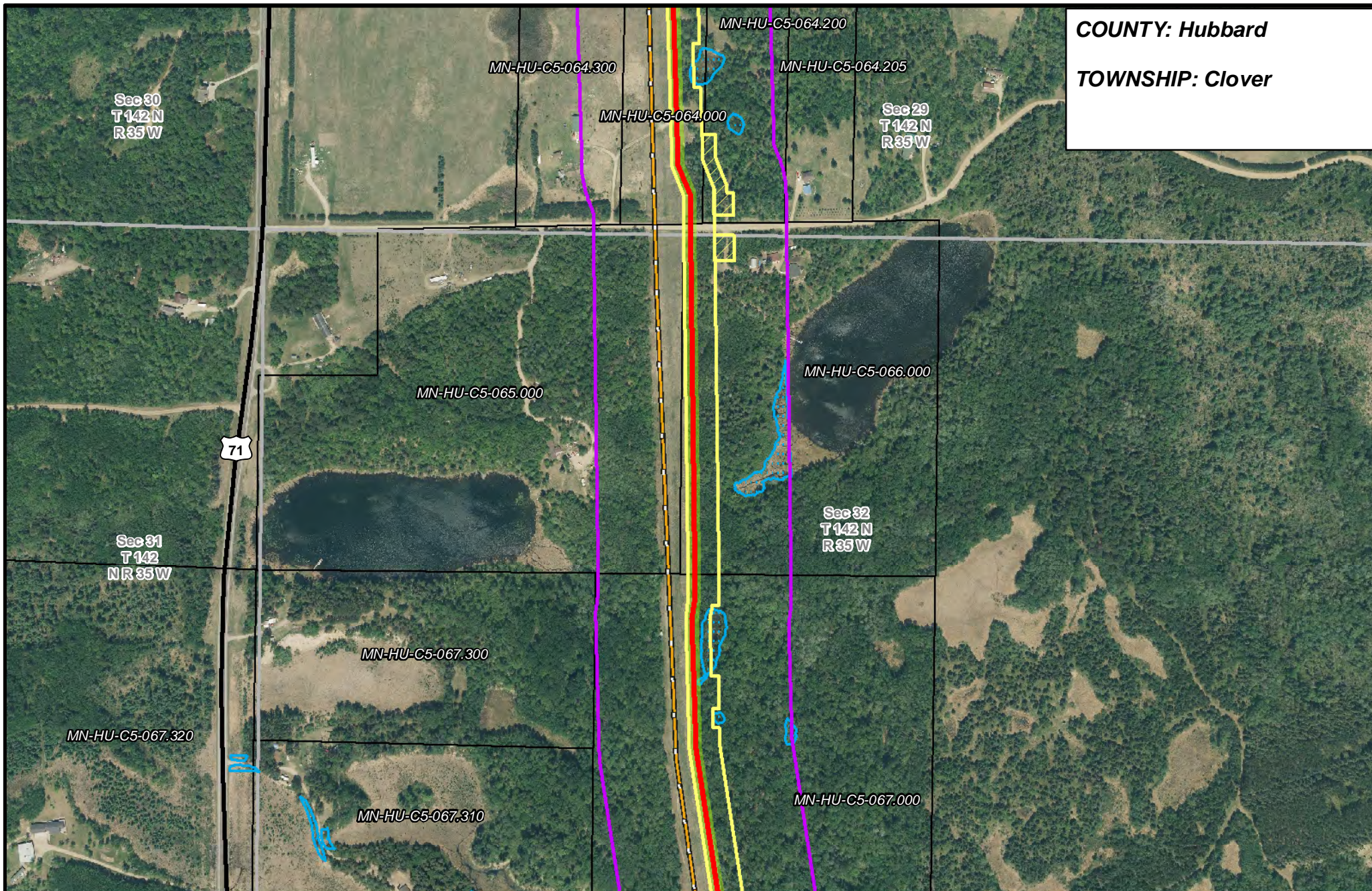
- PUC Designated Route
- Mile Post
- Surveyed Waterbodies
- Tract Boundary
- ROW
- Temporary Workspace
- ESA
- MN Section Boundary
- Line 3R Pipeline
- Additional Temporary Workspace
- Surveyed Wetlands
- Township/City Boundary
- Valve Location
- Existing Enbridge Pipelines
- NWI Wetlands
- County Boundary
- Enbridge Pump Station
- Existing Electric Transmission
- Existing Third Party Pipelines



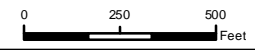
LINE 3 REPLACEMENT PIPELINE ROUTE

DRAWN: MLB CHECKED: --
 DATE: August 31, 2018 SCALE: 1:5,000
 Map 197 of 378

COUNTY: Hubbard
TOWNSHIP: Clover



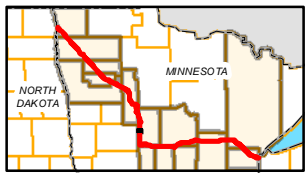
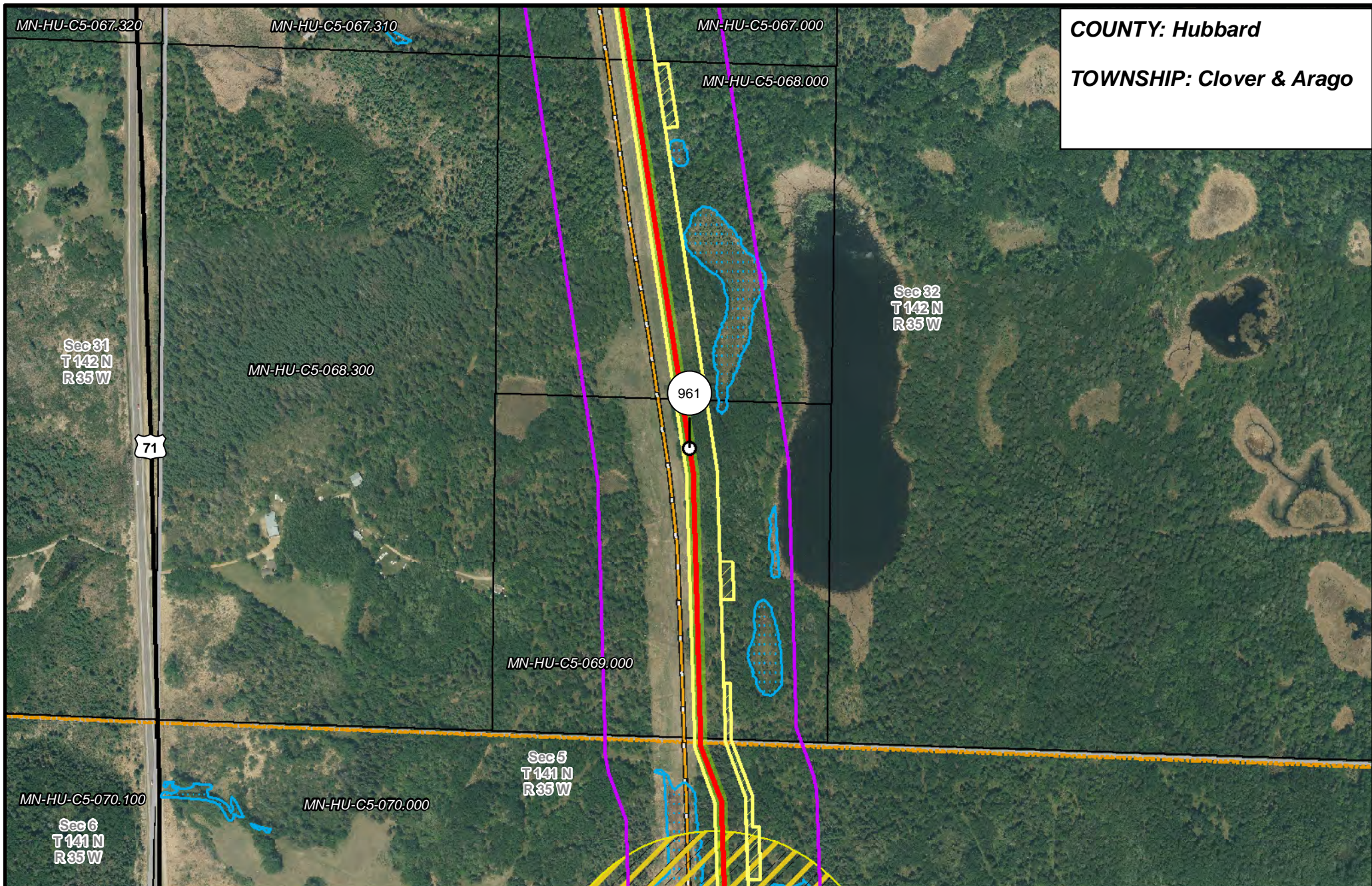
- | | | | |
|-----------------------|--------------------------------|----------------------|------------------------|
| PUC Designated Route | Mile Post | Surveyed Waterbodies | Tract Boundary |
| ROW | Temporary Workspace | ESA | MN Section Boundary |
| Line 3R Pipeline | Additional Temporary Workspace | Surveyed Wetlands | Township/City Boundary |
| Valve Location | Existing Enbridge Pipelines | NWI Wetlands | County Boundary |
| Enbridge Pump Station | Existing Electric Transmission | | |
| | Existing Third Party Pipelines | | |



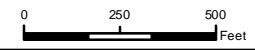
LINE 3 REPLACEMENT PIPELINE ROUTE

DRAWN: MLB CHECKED: --
 DATE: August 31, 2018 SCALE: 1:5,000
 Map 198 of 378

COUNTY: Hubbard
TOWNSHIP: Clover & Arago



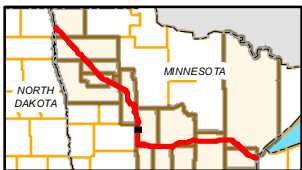
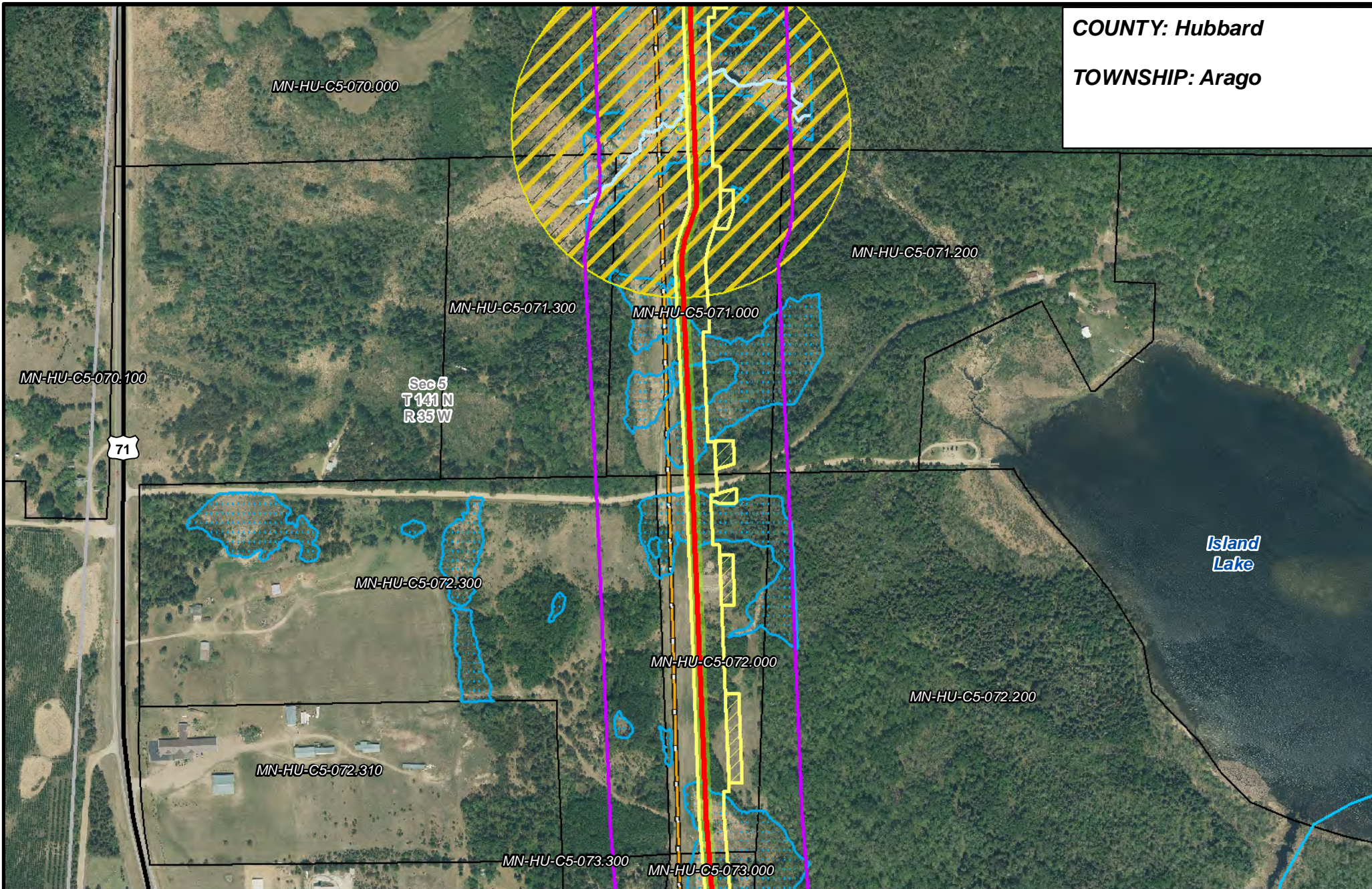
- | | | | |
|-----------------------|--------------------------------|----------------------|------------------------|
| PUC Designated Route | Mile Post | Surveyed Waterbodies | Tract Boundary |
| ROW | Temporary Workspace | ESA | MN Section Boundary |
| Line 3R Pipeline | Additional Temporary Workspace | Surveyed Wetlands | Township/City Boundary |
| Valve Location | Existing Enbridge Pipelines | NWI Wetlands | County Boundary |
| Enbridge Pump Station | Existing Electric Transmission | | |
| | Existing Third Party Pipelines | | |



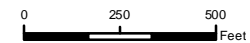
LINE 3 REPLACEMENT PIPELINE ROUTE

DRAWN: MLB CHECKED: --
 DATE: August 31, 2018 SCALE: 1:5,000
 Map 199 of 378

COUNTY: Hubbard
TOWNSHIP: Arago



- | | | | |
|-----------------------|--------------------------------|----------------------|------------------------|
| PUC Designated Route | Mile Post | Surveyed Waterbodies | Tract Boundary |
| ROW | Temporary Workspace | ESA | MN Section Boundary |
| Line 3R Pipeline | Additional Temporary Workspace | Surveyed Wetlands | Township/City Boundary |
| Valve Location | Existing Enbridge Pipelines | NWI Wetlands | County Boundary |
| Enbridge Pump Station | Existing Electric Transmission | | |
| | Existing Third Party Pipelines | | |

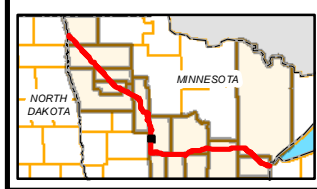
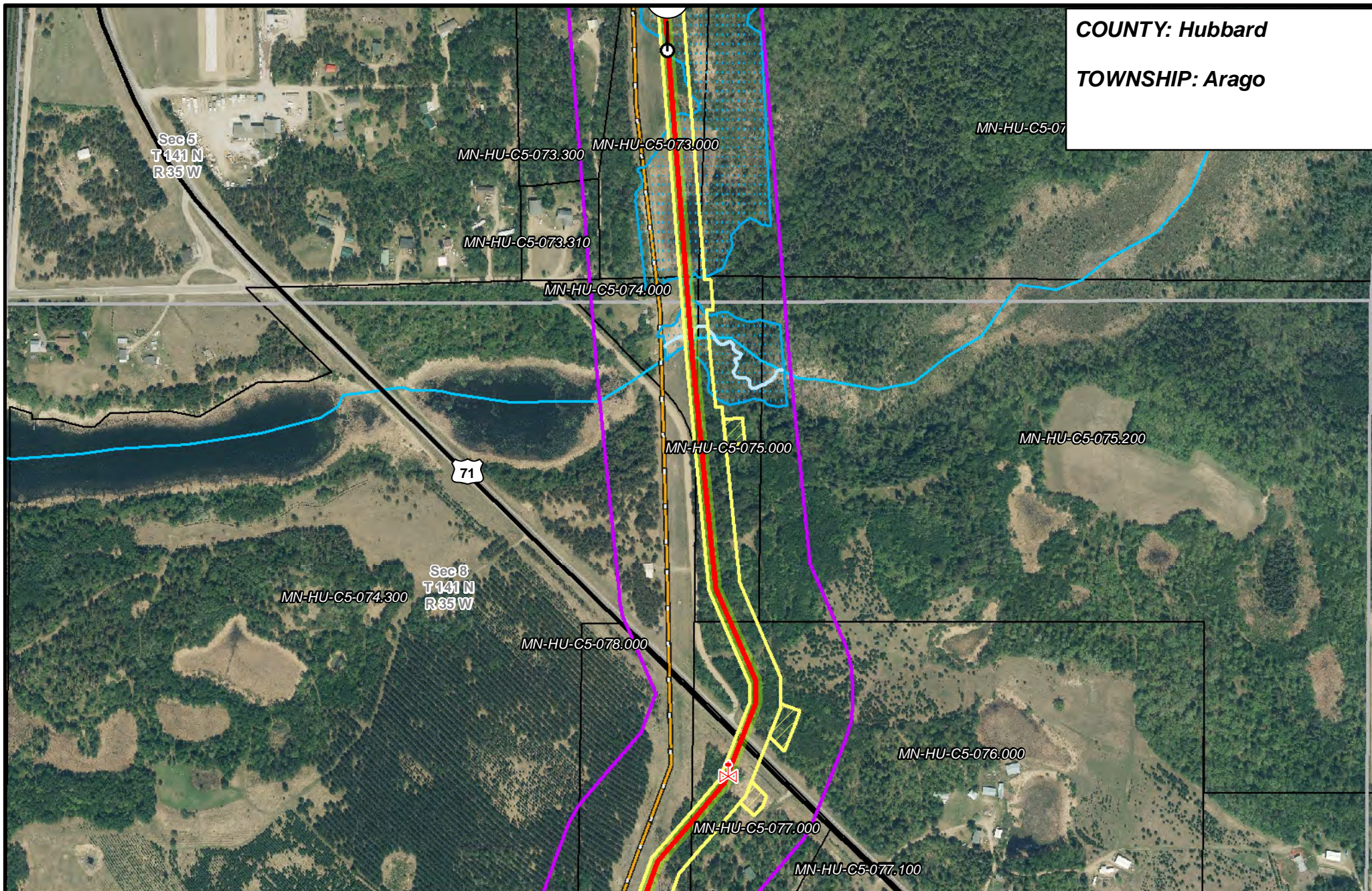


LINE 3 REPLACEMENT PIPELINE ROUTE

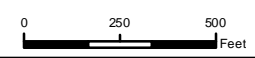
DRAWN: MLB CHECKED: --
 DATE: August 31, 2018 SCALE: 1:5,000

Map 200 of 378

COUNTY: Hubbard
TOWNSHIP: Arago



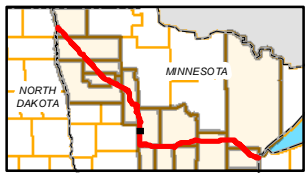
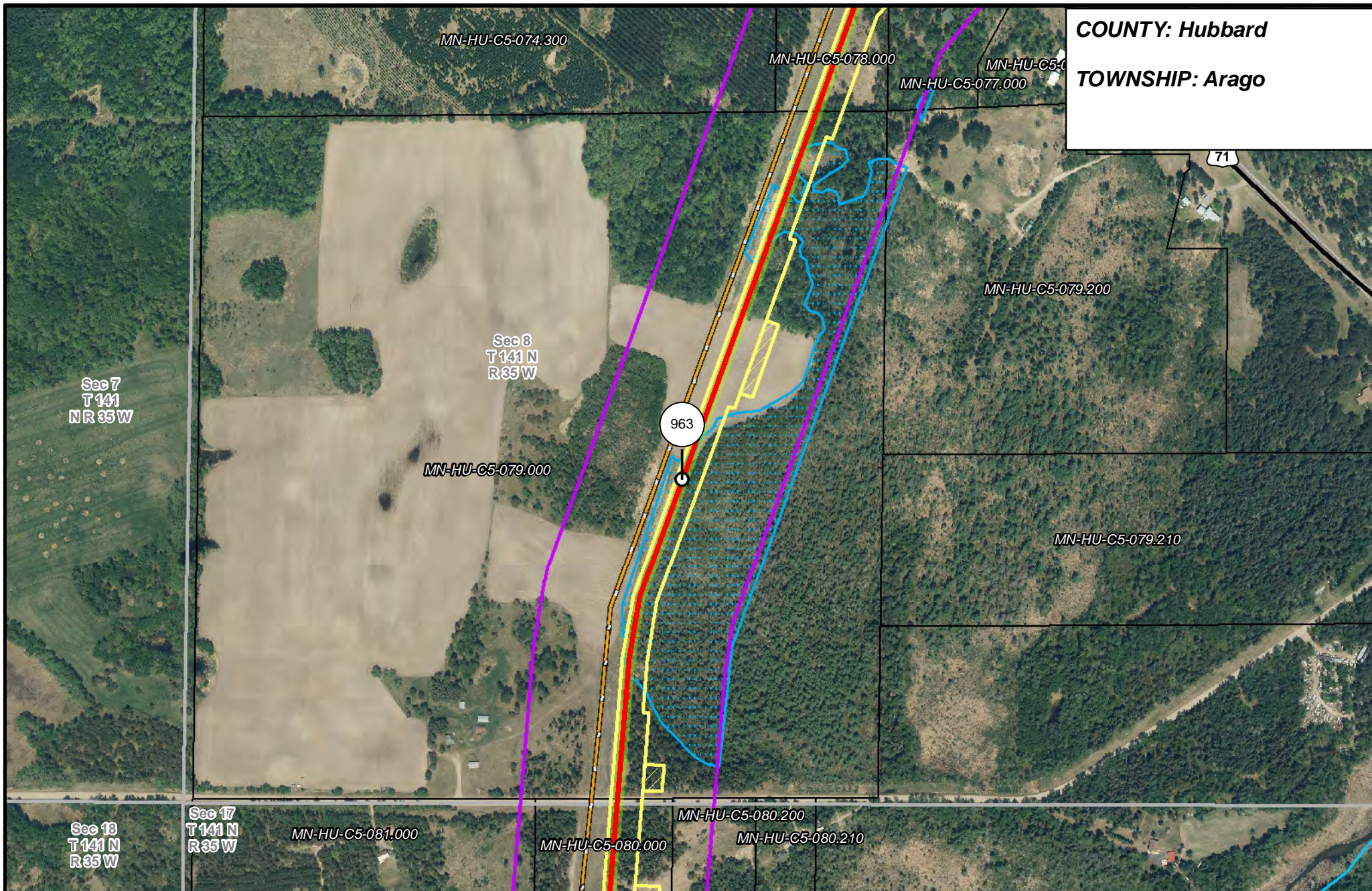
- | | | | |
|-----------------------|--------------------------------|----------------------|------------------------|
| PUC Designated Route | Mile Post | Surveyed Waterbodies | Tract Boundary |
| ROW | Temporary Workspace | ESA | MN Section Boundary |
| Line 3R Pipeline | Additional Temporary Workspace | Surveyed Wetlands | Township/City Boundary |
| Valve Location | Existing Enbridge Pipelines | NWI Wetlands | County Boundary |
| Enbridge Pump Station | Existing Electric Transmission | | |
| | Existing Third Party Pipelines | | |



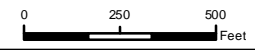
LINE 3 REPLACEMENT PIPELINE ROUTE

DRAWN: MLB CHECKED: --
 DATE: August 31, 2018 SCALE: 1:5,000
 Map 201 of 378

COUNTY: Hubbard
TOWNSHIP: Arago



- | | | | |
|-----------------------|--------------------------------|--------------------------------|------------------------|
| PUC Designated Route | Mile Post | Surveyed Waterbodies | Tract Boundary |
| ROW | Temporary Workspace | ESA | MN Section Boundary |
| Line 3R Pipeline | Additional Temporary Workspace | Surveyed Wetlands | Township/City Boundary |
| Valve Location | Existing Enbridge Pipelines | NWI Wetlands | County Boundary |
| Enbridge Pump Station | Existing Electric Transmission | Existing Third Party Pipelines | |



LINE 3 REPLACEMENT PIPELINE ROUTE

DRAWN: MLB CHECKED: --
 DATE: August 31, 2018 SCALE: 1:5,000

Map 202 of 378

COUNTY: Hubbard
TOWNSHIP: Arago

Sec 18
 T 141
 NR 35 W

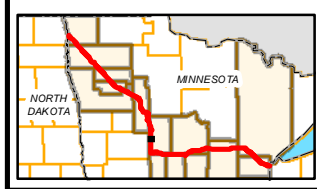
Sec 17
 T 141 N
 R 35 W

MN-HU-C5-080.000 MN-HU-C5-080.200
 MN-HU-C5-080.210

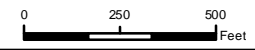
MN-HU-C5-081.000

MN-HU-C5-082.000

Hay
 Creek



- PUC Designated Route
- Mile Post
- Surveyed Waterbodies
- Tract Boundary
- ROW
- Temporary Workspace
- ESA
- MN Section Boundary
- Line 3R Pipeline
- Additional Temporary Workspace
- Surveyed Wetlands
- Township/City Boundary
- Valve Location
- Existing Enbridge Pipelines
- NWI Wetlands
- County Boundary
- Enbridge Pump Station
- Existing Electric Transmission
- Existing Third Party Pipelines

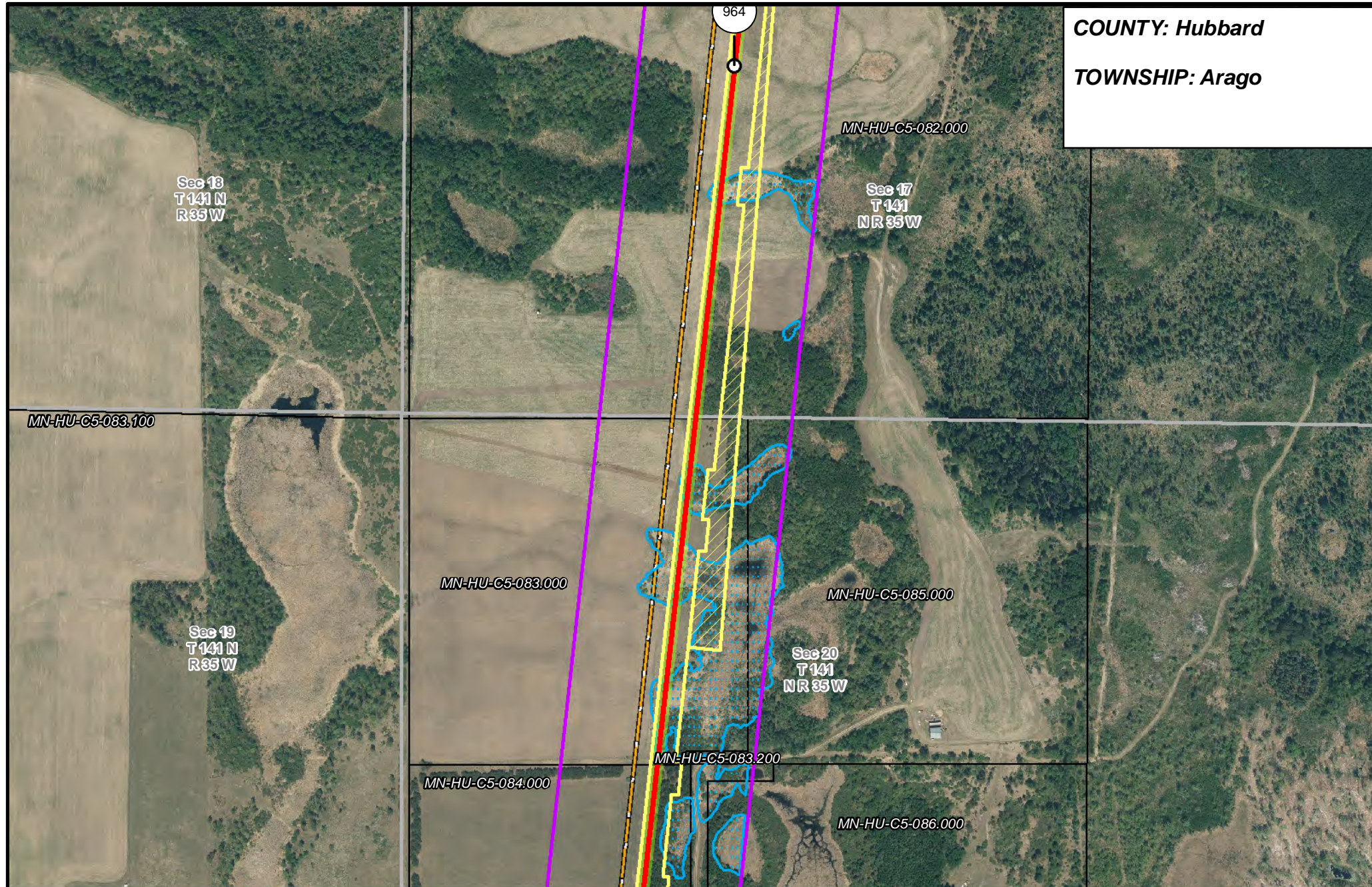


**LINE 3 REPLACEMENT
 PIPELINE ROUTE**

DRAWN: MLB CHECKED: --
 DATE: August 31, 2018 SCALE: 1:5,000
 Map 203 of 378

COUNTY: Hubbard

TOWNSHIP: Arago



Sec 18
T 141 N
R 35 W

Sec 17
T 141
NR 35 W

Sec 19
T 141 N
R 35 W

Sec 20
T 141
NR 35 W

MN-HU-C5-083.100

MN-HU-C5-083.000

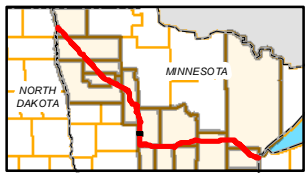
MN-HU-C5-085.000

MN-HU-C5-083.200

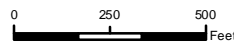
MN-HU-C5-084.000

MN-HU-C5-086.000

964



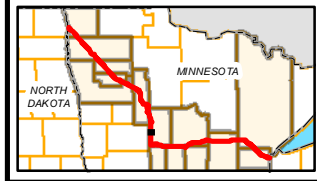
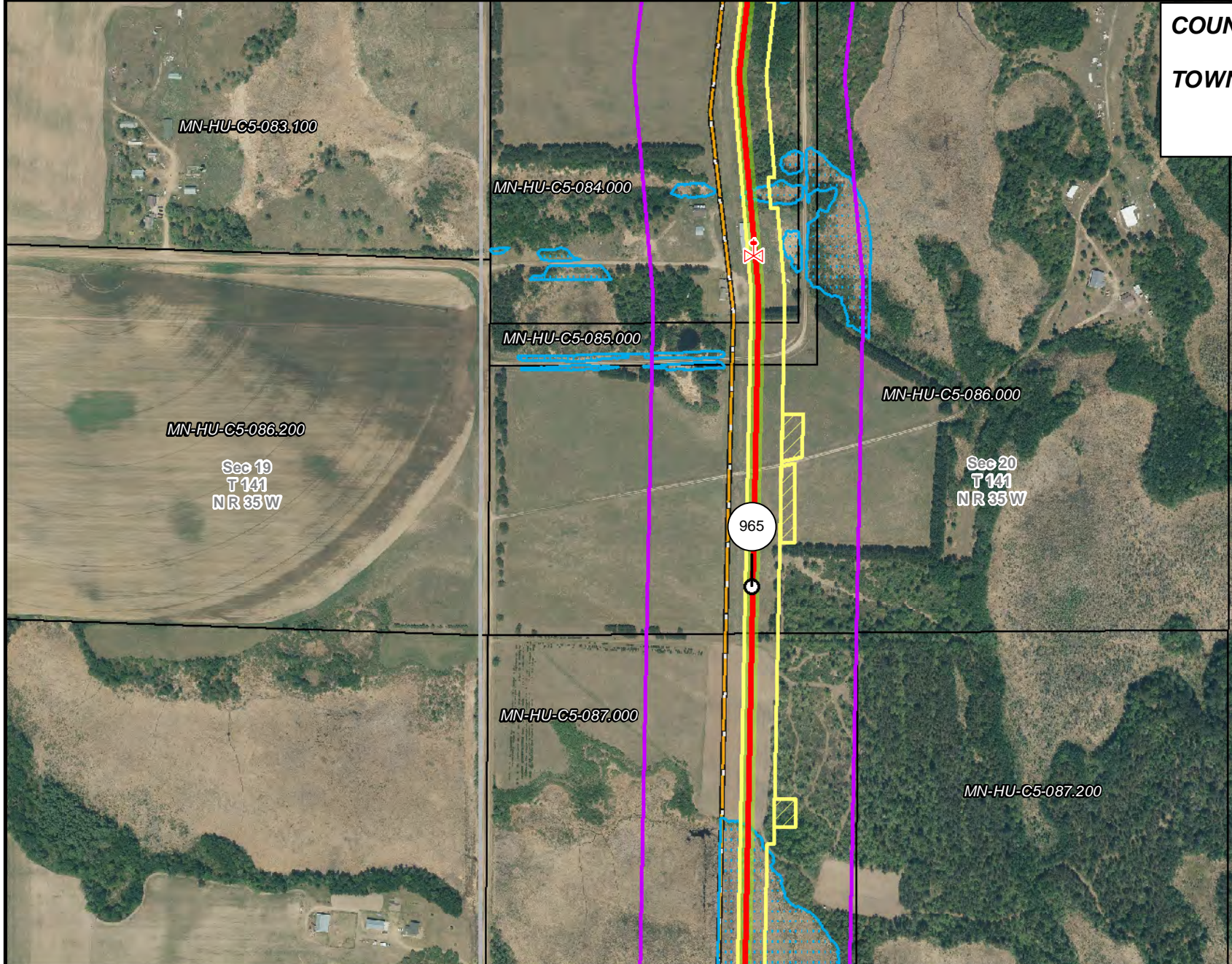
- PUC Designated Route
- ROW
- Line 3R Pipeline
- Valve Location
- Enbridge Pump Station
- Mile Post
- Temporary Workspace
- Additional Temporary Workspace
- Existing Enbridge Pipelines
- Existing Electric Transmission
- Existing Third Party Pipelines
- Surveyed Waterbodies
- ESA
- Surveyed Wetlands
- NWI Wetlands
- Tract Boundary
- MN Section Boundary
- Township/City Boundary
- County Boundary



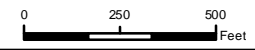
LINE 3 REPLACEMENT PIPELINE ROUTE

DRAWN: MLB CHECKED: --
DATE: August 31, 2018 SCALE: 1:5,000
Map 204 of 378

COUNTY: Hubbard
TOWNSHIP: Arago



- | | | | |
|-----------------------|--------------------------------|----------------------|------------------------|
| PUC Designated Route | Mile Post | Surveyed Waterbodies | Tract Boundary |
| ROW | Temporary Workspace | ESA | MN Section Boundary |
| Line 3R Pipeline | Additional Temporary Workspace | Surveyed Wetlands | Township/City Boundary |
| Valve Location | Existing Enbridge Pipelines | NWI Wetlands | County Boundary |
| Enbridge Pump Station | Existing Electric Transmission | | |
| | Existing Third Party Pipelines | | |



LINE 3 REPLACEMENT PIPELINE ROUTE

DRAWN: MLB CHECKED: --
 DATE: August 31, 2018 SCALE: 1:5,000
 Map 205 of 378