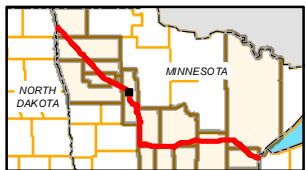
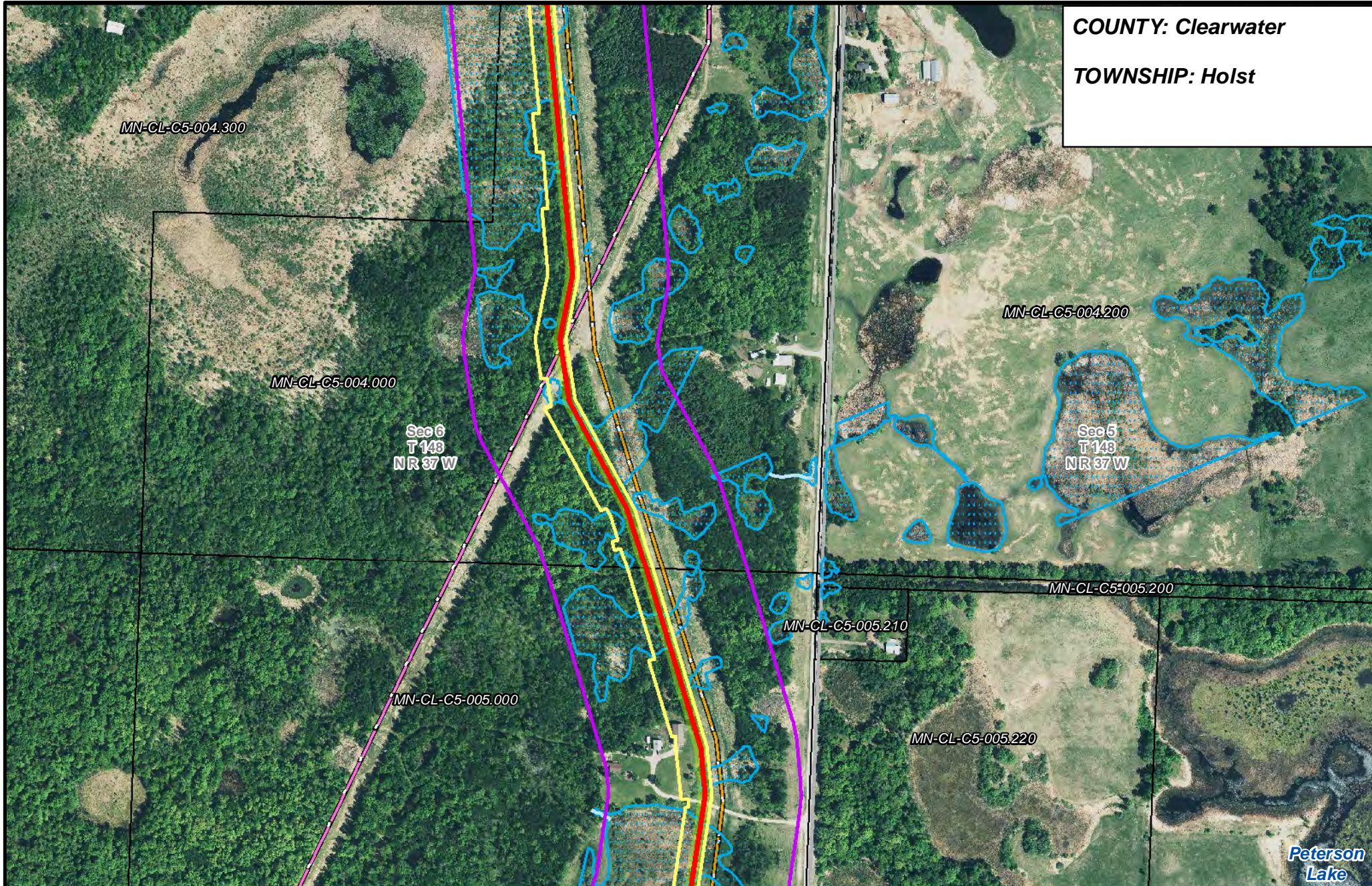
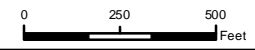


COUNTY: Clearwater

TOWNSHIP: Holst



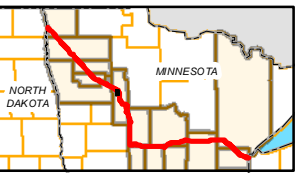
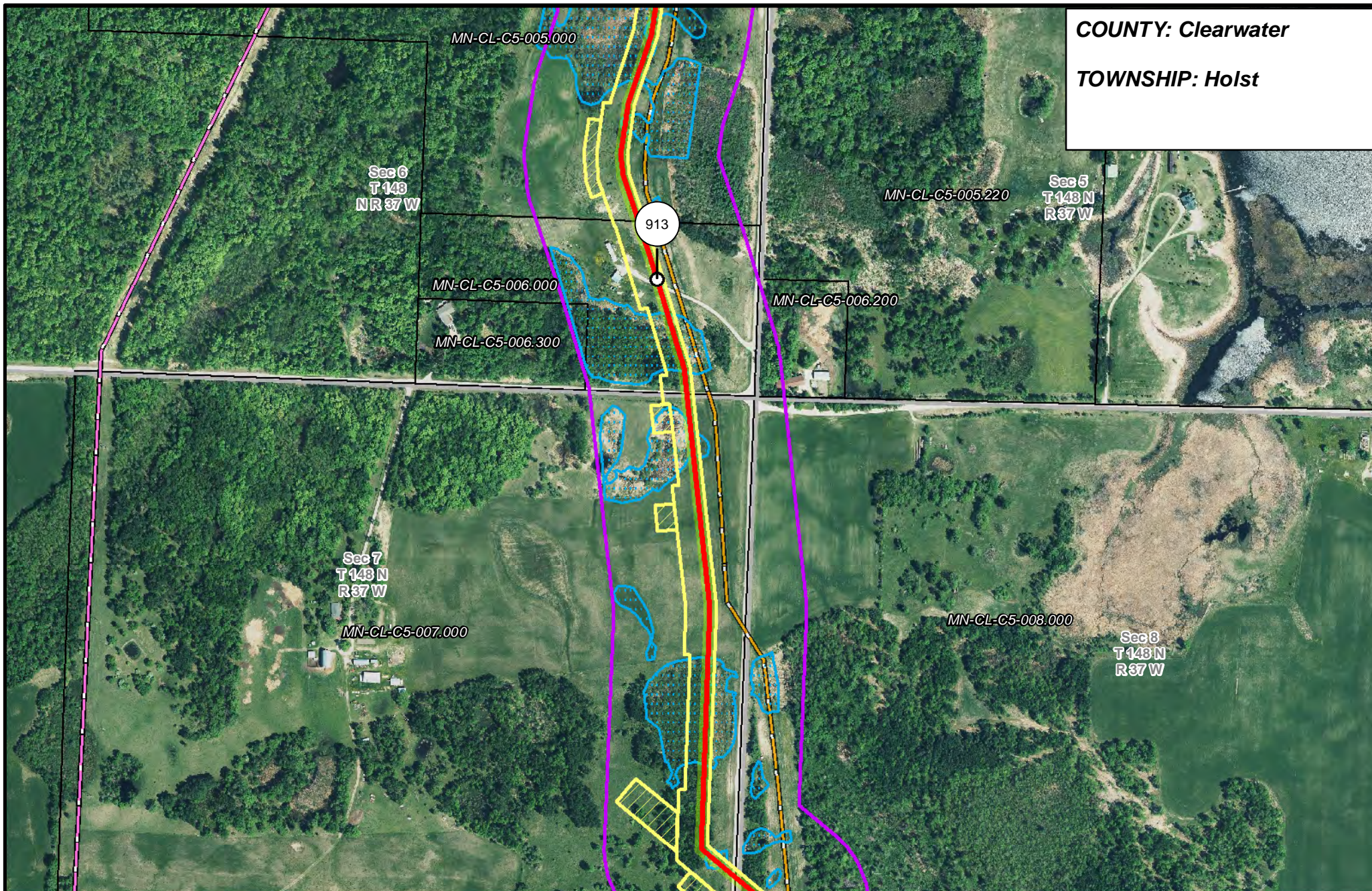
- PUC Designated Route
- ROW
- Line 3R Pipeline
- Valve Location
- Enbridge Pump Station
- Mile Post
- Temporary Workspace
- Additional Temporary Workspace
- Existing Enbridge Pipelines
- Existing Electric Transmission
- Existing Third Party Pipelines
- Surveyed Waterbodies
- ESA
- Surveyed Wetlands
- NWI Wetlands
- Tract Boundary
- MN Section Boundary
- Township/City Boundary
- County Boundary



LINE 3 REPLACEMENT PIPELINE ROUTE

DRAWN: MLB CHECKED: --
DATE: August 31, 2018 SCALE: 1:5,000
Map 130 of 378

COUNTY: Clearwater
TOWNSHIP: Holst



- | | | | |
|-----------------------|--------------------------------|--------------------------------|------------------------|
| PUC Designated Route | Mile Post | Surveyed Waterbodies | Tract Boundary |
| ROW | Temporary Workspace | ESA | MN Section Boundary |
| Line 3R Pipeline | Additional Temporary Workspace | Surveyed Wetlands | Township/City Boundary |
| Valve Location | Existing Enbridge Pipelines | NWI Wetlands | County Boundary |
| Enbridge Pump Station | Existing Electric Transmission | Existing Third Party Pipelines | |



LINE 3 REPLACEMENT PIPELINE ROUTE

DRAWN: MLB CHECKED: --
 DATE: August 31, 2018 SCALE: 1:5,000
 Map 131 of 378

COUNTY: Clearwater

TOWNSHIP: Holst

MN-CL-C5-007.000

MN-CL-C5-008.000

MN-CL-C5-009.300

Sec 7
T148N
R37W

MN-CL-C5-009.000

Sec 8
T148
N R 37 W

MN-CL-C5-010.300

MN-CL-C5-010.000

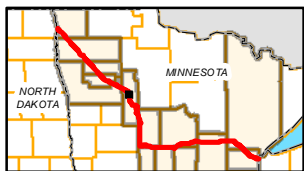
914

MN-CL-C5-011.300

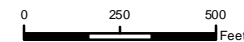
MN-CL-C5-011.300

MN-CL-C5-011.000

223



- PUC Designated Route
- ROW
- Line 3R Pipeline
- Valve Location
- Enbridge Pump Station
- Temporary Workspace
- Additional Temporary Workspace
- Existing Enbridge Pipelines
- Existing Electric Transmission
- Existing Third Party Pipelines
- Mile Post
- Surveyed Waterbodies
- ESA
- Surveyed Wetlands
- NWI Wetlands
- Tract Boundary
- MN Section Boundary
- Township/City Boundary
- County Boundary

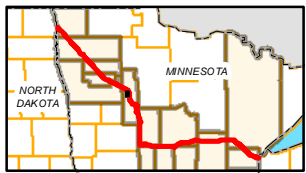
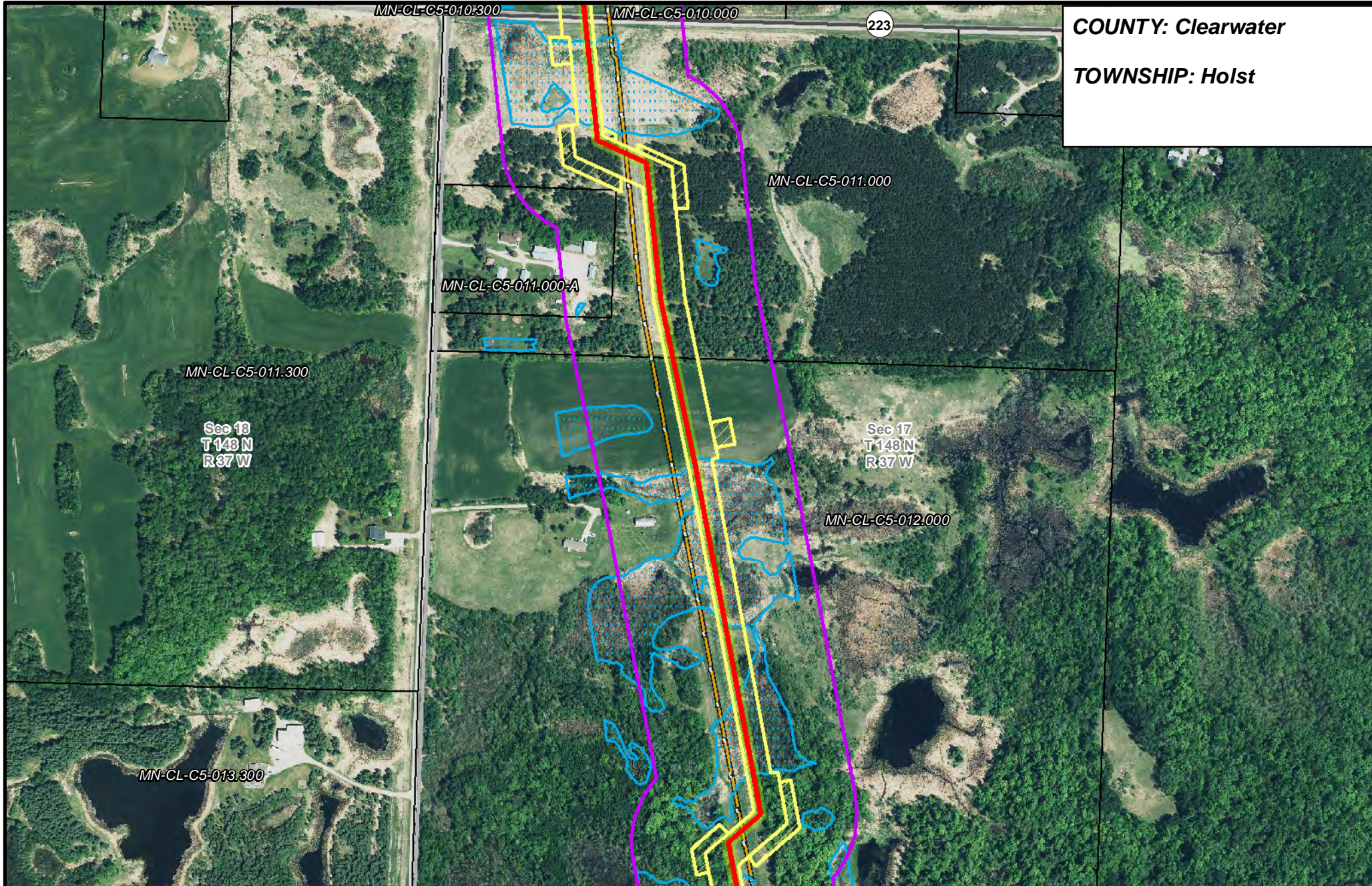


LINE 3 REPLACEMENT PIPELINE ROUTE

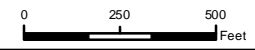
DRAWN: MLB CHECKED: --
 DATE: August 31, 2018 SCALE: 1:5,000
 Map 132 of 378

COUNTY: Clearwater

TOWNSHIP: Holst



- PUC Designated Route
- ROW
- Line 3R Pipeline
- Valve Location
- Enbridge Pump Station
- Mile Post
- Temporary Workspace
- Additional Temporary Workspace
- Existing Enbridge Pipelines
- Existing Electric Transmission
- Existing Third Party Pipelines
- Surveyed Waterbodies
- ESA
- Surveyed Wetlands
- NWI Wetlands
- Tract Boundary
- MN Section Boundary
- Township/City Boundary
- County Boundary

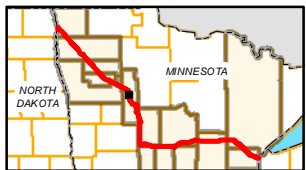
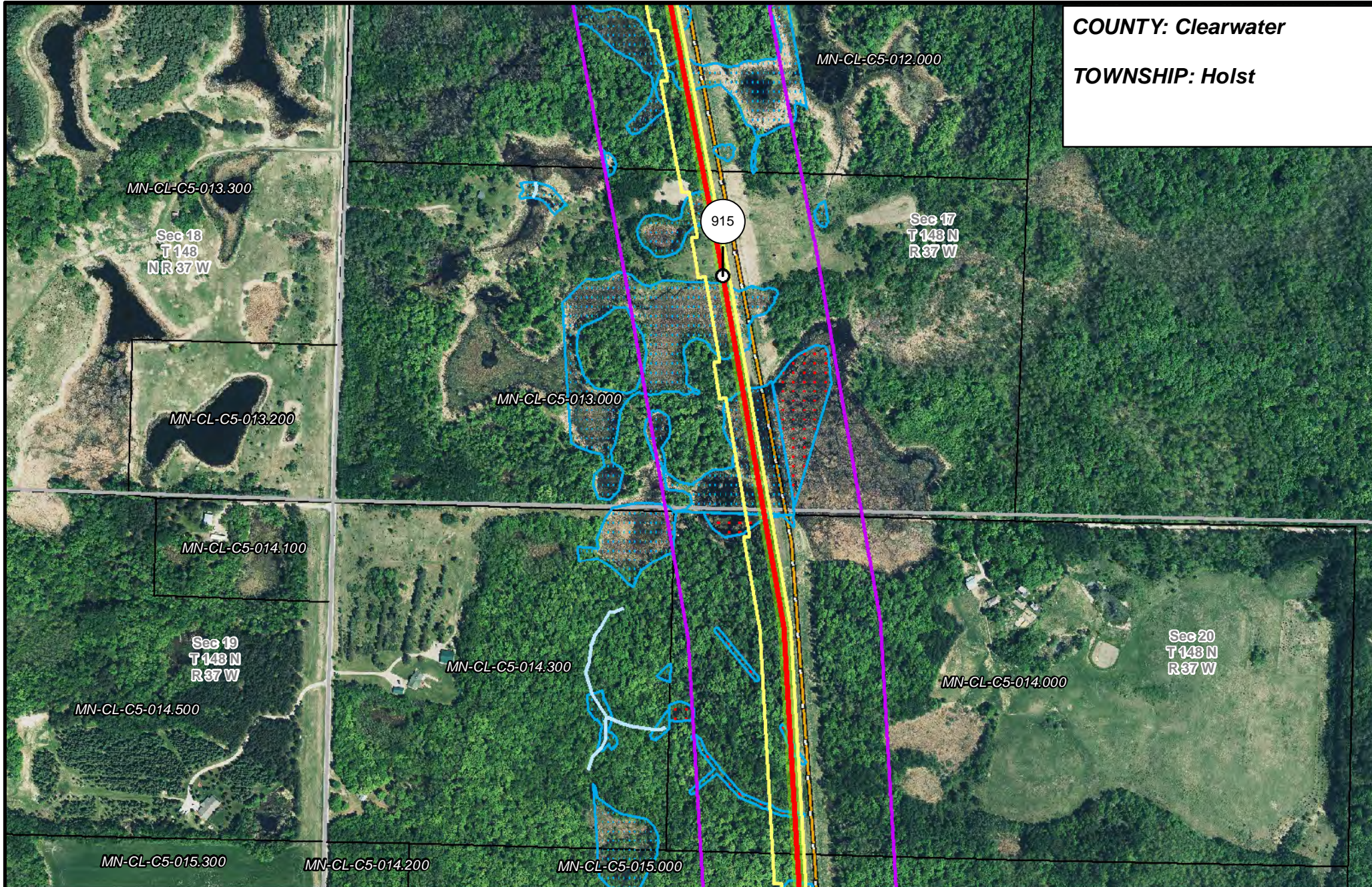


LINE 3 REPLACEMENT PIPELINE ROUTE

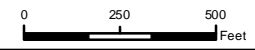
DRAWN: MLB CHECKED: --
DATE: August 31, 2018 SCALE: 1:5,000
Map 133 of 378

COUNTY: Clearwater

TOWNSHIP: Holst



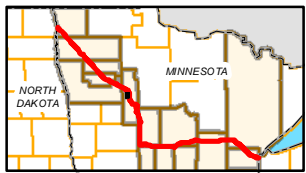
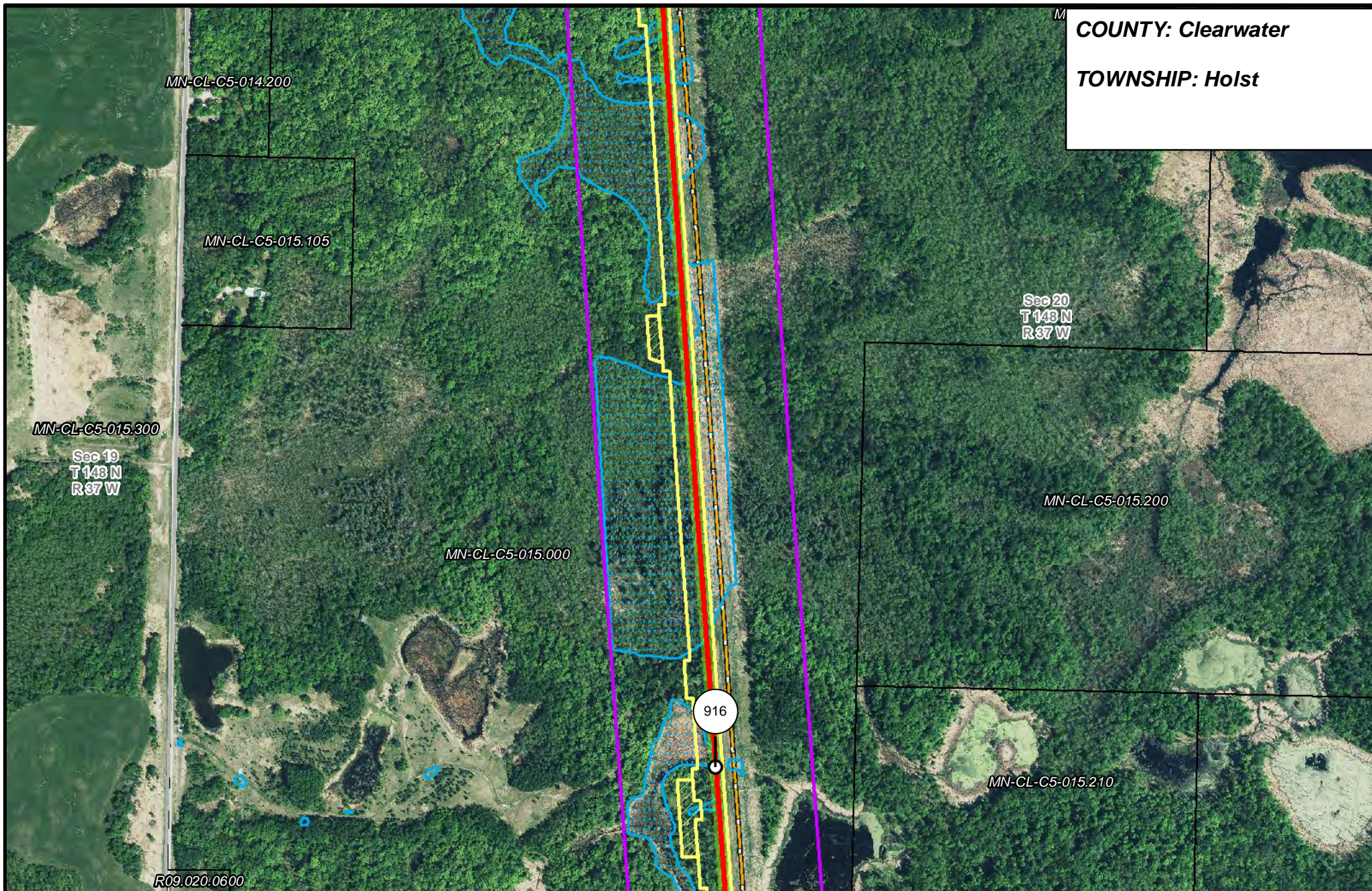
- PUC Designated Route
- ROW
- Line 3R Pipeline
- Valve Location
- Enbridge Pump Station
- Mile Post
- Temporary Workspace
- Additional Temporary Workspace
- Existing Enbridge Pipelines
- Existing Electric Transmission
- Existing Third Party Pipelines
- Surveyed Waterbodies
- ESA
- Surveyed Wetlands
- NWI Wetlands
- Tract Boundary
- MN Section Boundary
- Township/City Boundary
- County Boundary



LINE 3 REPLACEMENT PIPELINE ROUTE

DRAWN: MLB CHECKED: --
DATE: August 31, 2018 SCALE: 1:5,000
Map 134 of 378

COUNTY: Clearwater
TOWNSHIP: Holst



- | | | | |
|-----------------------|--------------------------------|----------------------|------------------------|
| PUC Designated Route | Mile Post | Surveyed Waterbodies | Tract Boundary |
| ROW | Temporary Workspace | ESA | MN Section Boundary |
| Line 3R Pipeline | Additional Temporary Workspace | Surveyed Wetlands | Township/City Boundary |
| Valve Location | Existing Enbridge Pipelines | NWI Wetlands | County Boundary |
| Enbridge Pump Station | Existing Electric Transmission | | |
| | Existing Third Party Pipelines | | |

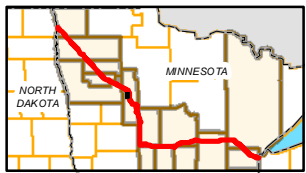
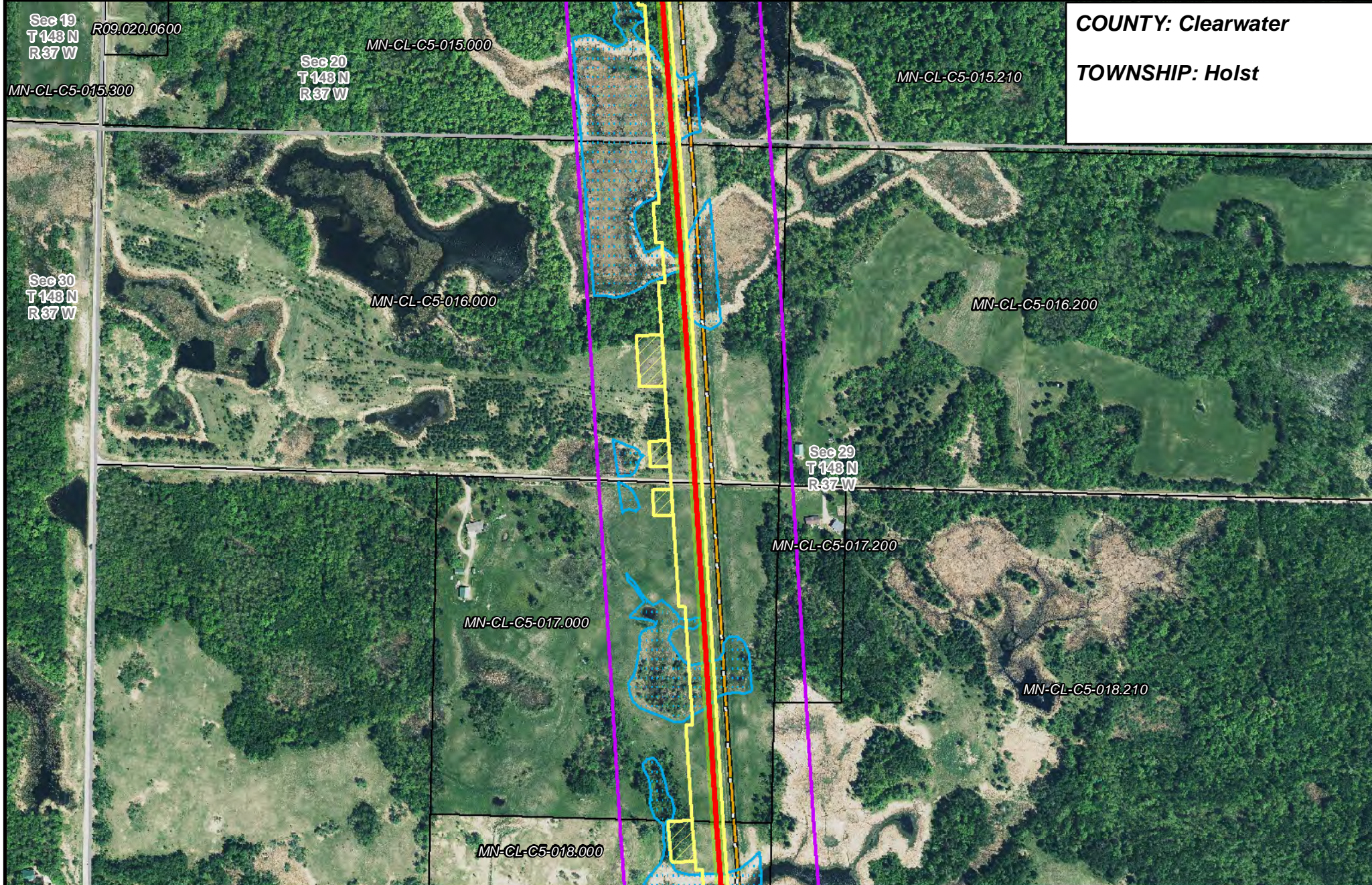


LINE 3 REPLACEMENT PIPELINE ROUTE

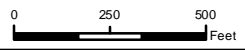
DRAWN: MLB CHECKED: --
 DATE: August 31, 2018 SCALE: 1:5,000
 Map 135 of 378

COUNTY: Clearwater

TOWNSHIP: Holst



- | | | | |
|-----------------------|--------------------------------|----------------------|------------------------|
| PUC Designated Route | Mile Post | Surveyed Waterbodies | Tract Boundary |
| ROW | Temporary Workspace | ESA | MN Section Boundary |
| Line 3R Pipeline | Additional Temporary Workspace | Surveyed Wetlands | Township/City Boundary |
| Valve Location | Existing Enbridge Pipelines | NWI Wetlands | County Boundary |
| Enbridge Pump Station | Existing Electric Transmission | | |
| | Existing Third Party Pipelines | | |



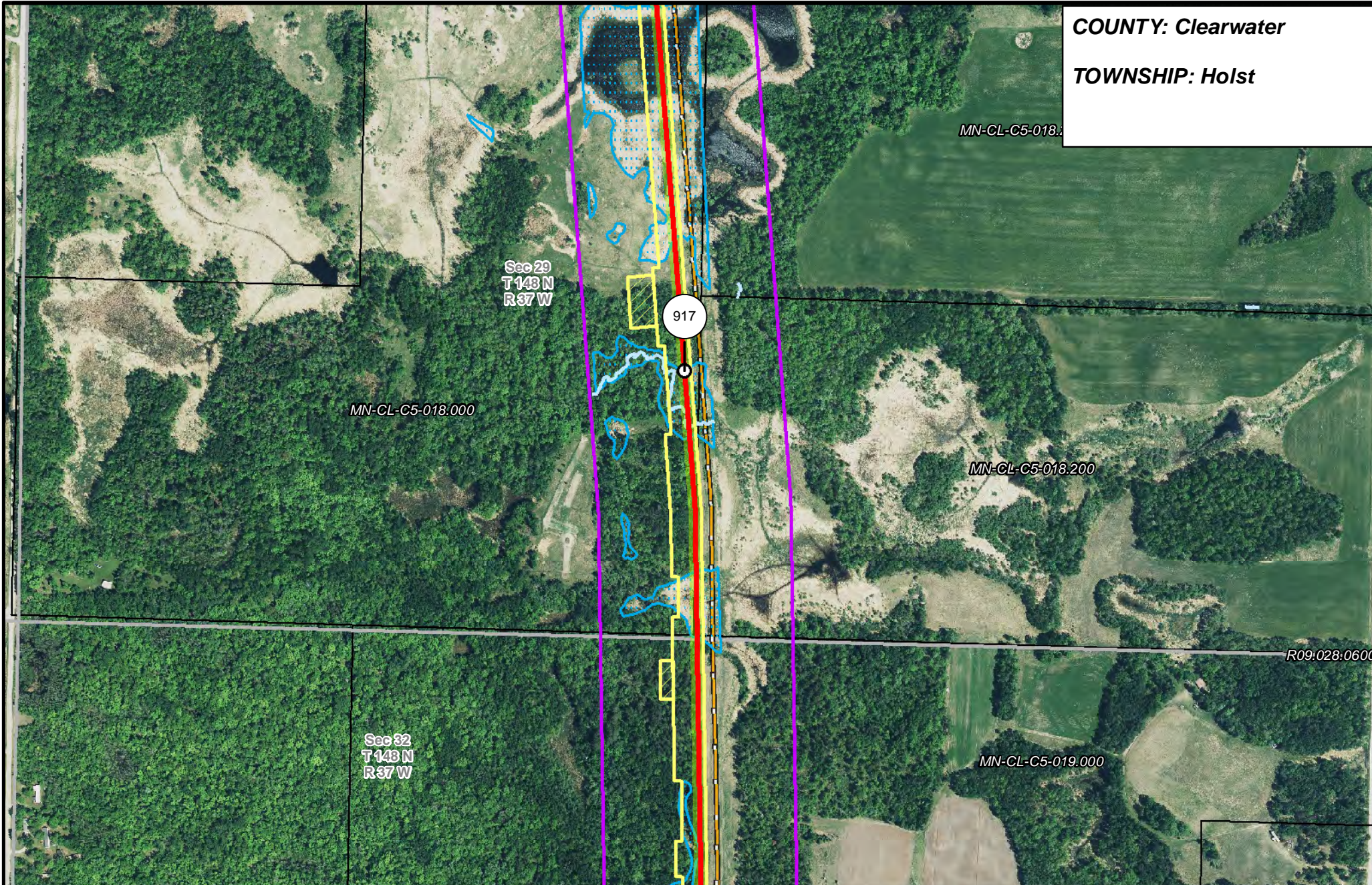
LINE 3 REPLACEMENT PIPELINE ROUTE

DRAWN: MLB CHECKED: --
 DATE: August 31, 2018 SCALE: 1:5,000

Map 136 of 378

COUNTY: Clearwater

TOWNSHIP: Holst



Sec 29
T 143 N
R 37 W

MN-CL-C5-018.000

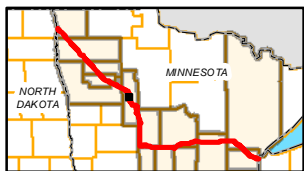
917

MN-CL-C5-018.200

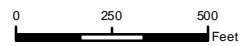
Sec 32
T 143 N
R 37 W

MN-CL-C5-019.000

R09:028:0600



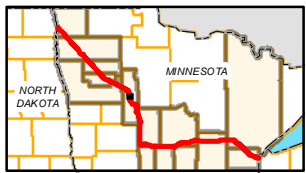
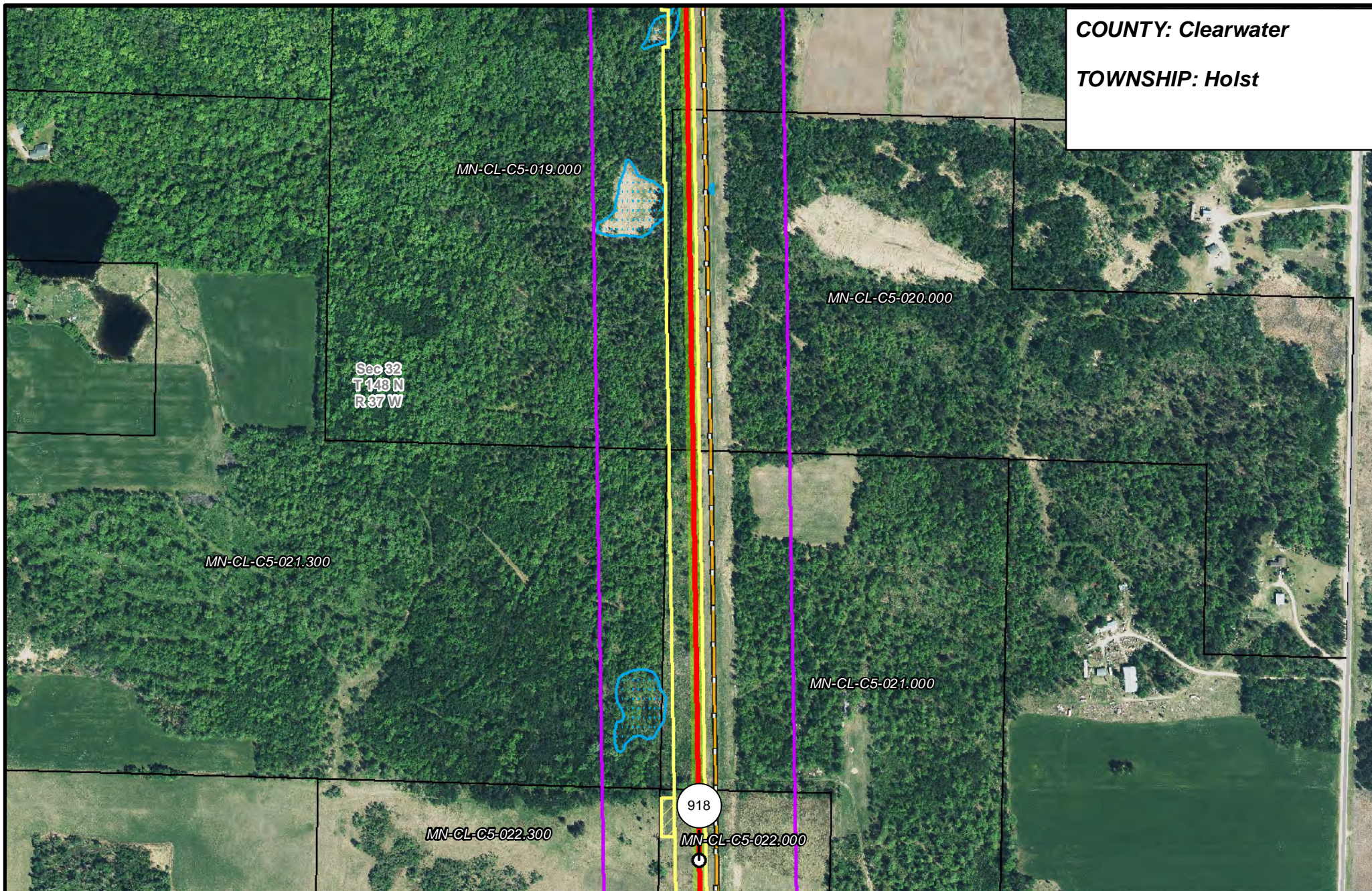
- PUC Designated Route
- ROW
- Line 3R Pipeline
- Valve Location
- Enbridge Pump Station
- Mile Post
- Temporary Workspace
- Additional Temporary Workspace
- Existing Enbridge Pipelines
- Existing Electric Transmission
- Existing Third Party Pipelines
- Surveyed Waterbodies
- ESA
- Surveyed Wetlands
- NWI Wetlands
- Tract Boundary
- MN Section Boundary
- Township/City Boundary
- County Boundary



LINE 3 REPLACEMENT PIPELINE ROUTE

DRAWN: MLB CHECKED: --
DATE: August 31, 2018 SCALE: 1:5,000
Map 137 of 378

COUNTY: Clearwater
TOWNSHIP: Holst



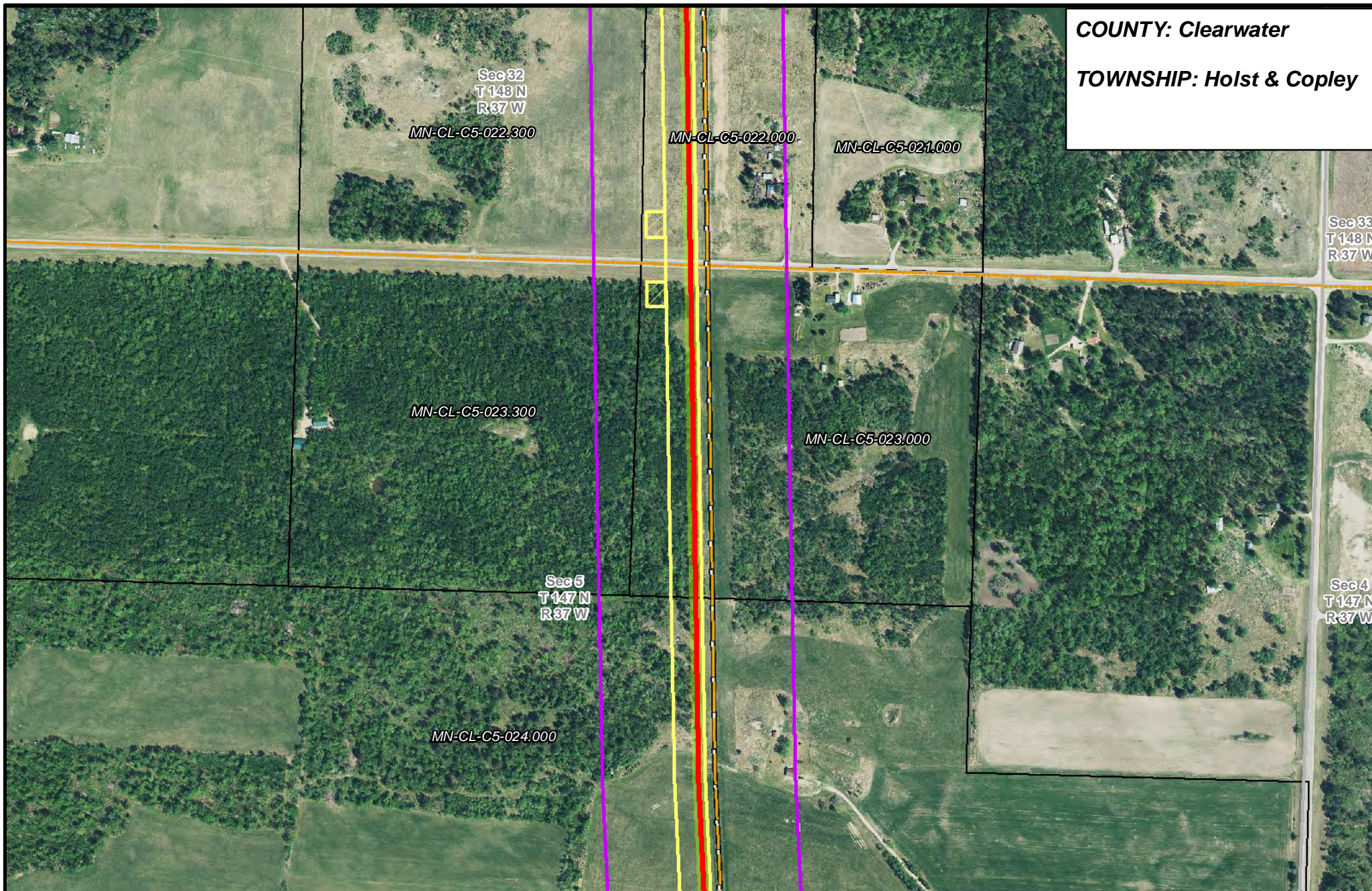
- | | | | |
|-----------------------|--------------------------------|----------------------|------------------------|
| PUC Designated Route | Mile Post | Surveyed Waterbodies | Tract Boundary |
| ROW | Temporary Workspace | ESA | MN Section Boundary |
| Line 3R Pipeline | Additional Temporary Workspace | Surveyed Wetlands | Township/City Boundary |
| Valve Location | Existing Enbridge Pipelines | NWI Wetlands | County Boundary |
| Enbridge Pump Station | Existing Electric Transmission | | |
| | Existing Third Party Pipelines | | |



LINE 3 REPLACEMENT PIPELINE ROUTE

DRAWN: MLB CHECKED: --
 DATE: August 31, 2018 SCALE: 1:5,000
 Map 138 of 378

COUNTY: Clearwater
TOWNSHIP: Holst & Copley



Sec 32
T 148 N
R 37 W
MN-CL-C5-022.300

MN-CL-C5-022.000

MN-CL-C5-021.000

Sec 33
T 148 N
R 37 W

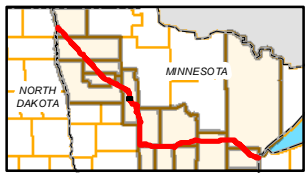
MN-CL-C5-023.300

MN-CL-C5-023.000

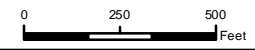
Sec 5
T 147 N
R 37 W

Sec 4
T 147 N
R 37 W

MN-CL-C5-024.000



- | | | | |
|-----------------------|--------------------------------|----------------------|------------------------|
| PUC Designated Route | Mile Post | Surveyed Waterbodies | Tract Boundary |
| ROW | Temporary Workspace | ESA | MN Section Boundary |
| Line 3R Pipeline | Additional Temporary Workspace | Surveyed Wetlands | Township/City Boundary |
| Valve Location | Existing Enbridge Pipelines | NWI Wetlands | County Boundary |
| Enbridge Pump Station | Existing Electric Transmission | | |
| | Existing Third Party Pipelines | | |

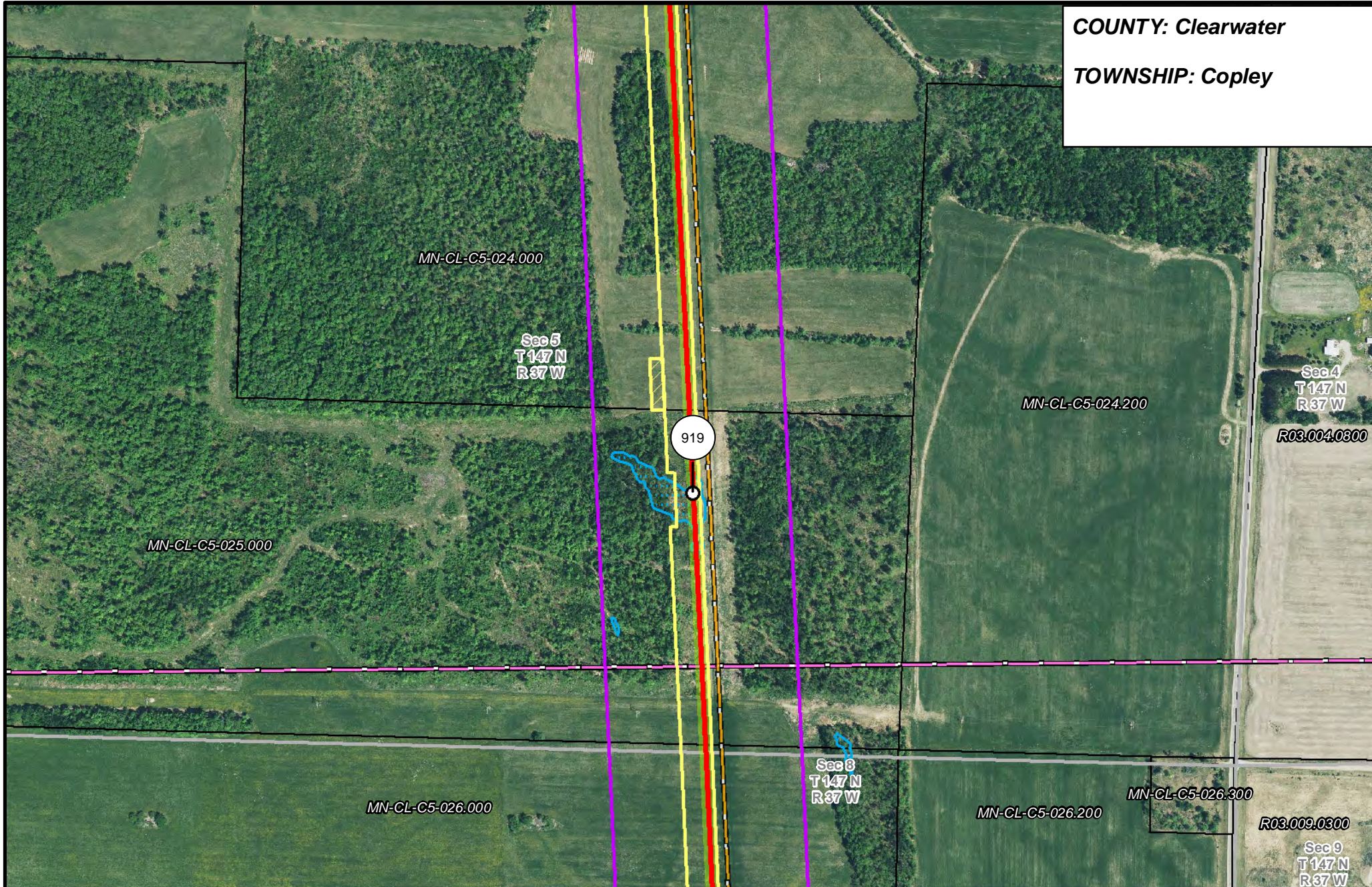


**LINE 3 REPLACEMENT
PIPELINE ROUTE**

DRAWN: MLB CHECKED: --
 DATE: August 31, 2018 SCALE: 1:5,000
 Map 139 of 378

COUNTY: Clearwater

TOWNSHIP: Copley



MN-CL-C5-024.000

Sec 5
T147 N
R37 W

MN-CL-C5-024.200

Sec 4
T147 N
R37 W

R03.004.0300

MN-CL-C5-025.000

919

Sec 8
T147 N
R37 W

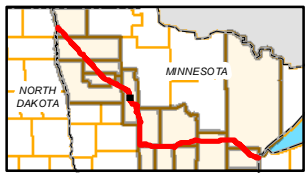
MN-CL-C5-026.000

MN-CL-C5-026.200

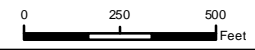
MN-CL-C5-026.300

R03.009.0300

Sec 9
T147 N
R37 W



- PUC Designated Route
- ROW
- Line 3R Pipeline
- Valve Location
- Enbridge Pump Station
- Mile Post
- Temporary Workspace
- Additional Temporary Workspace
- Existing Enbridge Pipelines
- Existing Electric Transmission
- Existing Third Party Pipelines
- Surveyed Waterbodies
- ESA
- Surveyed Wetlands
- NWI Wetlands
- Tract Boundary
- MN Section Boundary
- Township/City Boundary
- County Boundary



LINE 3 REPLACEMENT PIPELINE ROUTE

DRAWN: MLB CHECKED: --
DATE: August 31, 2018 SCALE: 1:5,000
Map 140 of 378

COUNTY: Clearwater

TOWNSHIP: Copley

MN-CL-C5-026.000

MN-CL-C5-027.000

MN-CL-C5-026.200

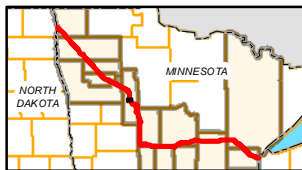
R03.009.0300

Sec 8
T147 N
R37 W

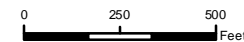
Sec 9
T147 N
R37 W

MN-CL-C5-028.200

MN-CL-C5-028.000



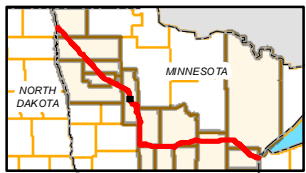
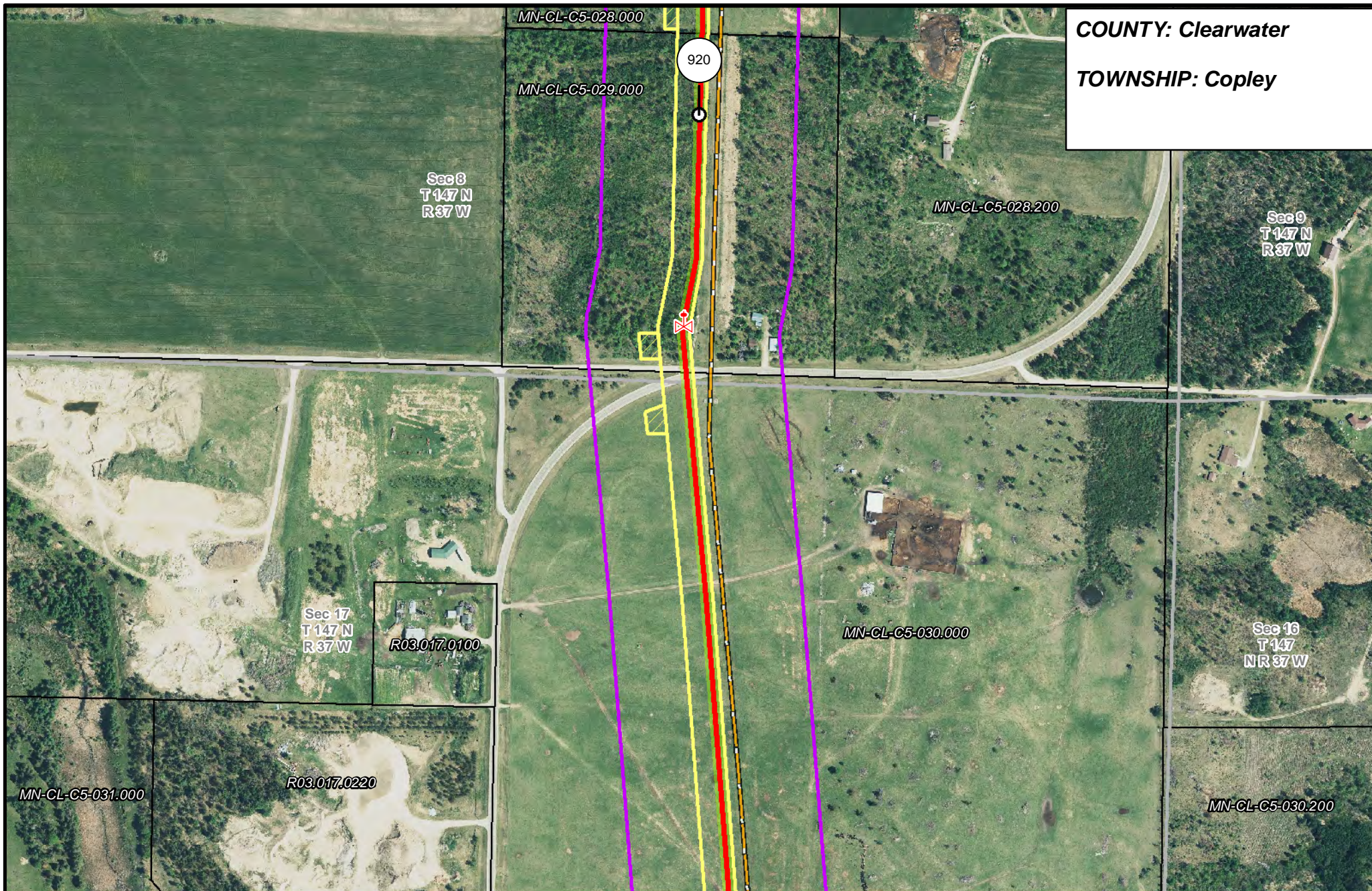
- PUC Designated Route
- ROW
- Line 3R Pipeline
- Valve Location
- Enbridge Pump Station
- Mile Post
- Temporary Workspace
- Additional Temporary Workspace
- Existing Enbridge Pipelines
- Existing Electric Transmission
- Existing Third Party Pipelines
- Surveyed Waterbodies
- ESA
- Surveyed Wetlands
- NWI Wetlands
- Tract Boundary
- MN Section Boundary
- Township/City Boundary
- County Boundary



LINE 3 REPLACEMENT PIPELINE ROUTE

DRAWN: MLB CHECKED: --
 DATE: August 31, 2018 SCALE: 1:5,000
 Map 141 of 378

COUNTY: Clearwater
TOWNSHIP: Copley



- | | | | |
|-----------------------|--------------------------------|----------------------|------------------------|
| PUC Designated Route | Mile Post | Surveyed Waterbodies | Tract Boundary |
| ROW | Temporary Workspace | ESA | MN Section Boundary |
| Line 3R Pipeline | Additional Temporary Workspace | Surveyed Wetlands | Township/City Boundary |
| Valve Location | Existing Enbridge Pipelines | NWI Wetlands | County Boundary |
| Enbridge Pump Station | Existing Electric Transmission | | |
| | Existing Third Party Pipelines | | |



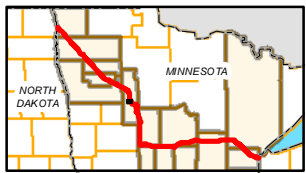
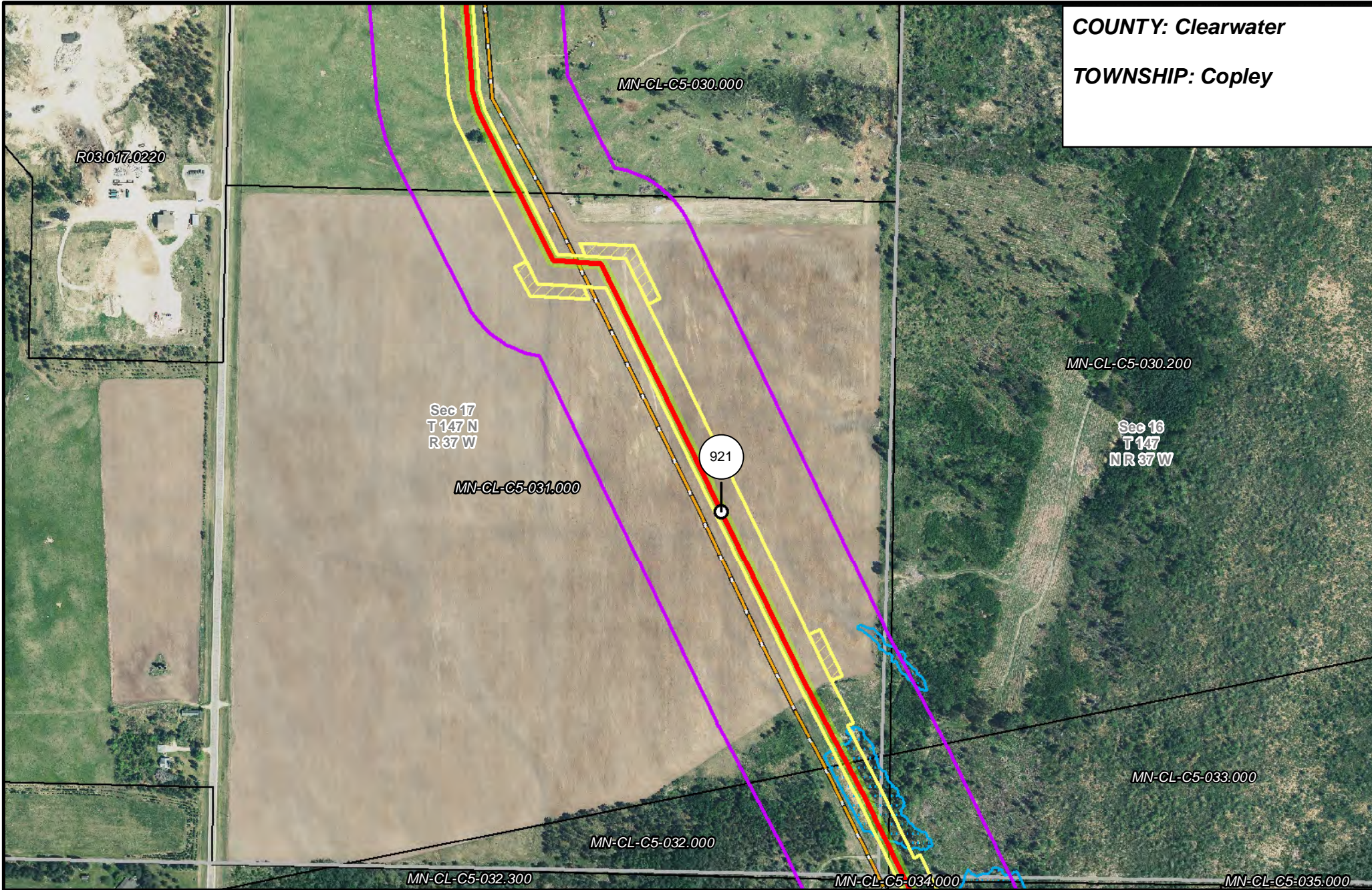
LINE 3 REPLACEMENT PIPELINE ROUTE

DRAWN: MLB CHECKED: --
 DATE: August 31, 2018 SCALE: 1:5,000

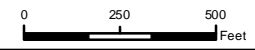
Map 142 of 378

COUNTY: Clearwater

TOWNSHIP: Copley



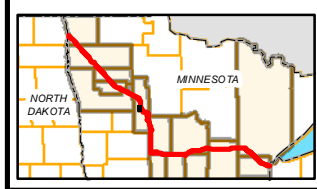
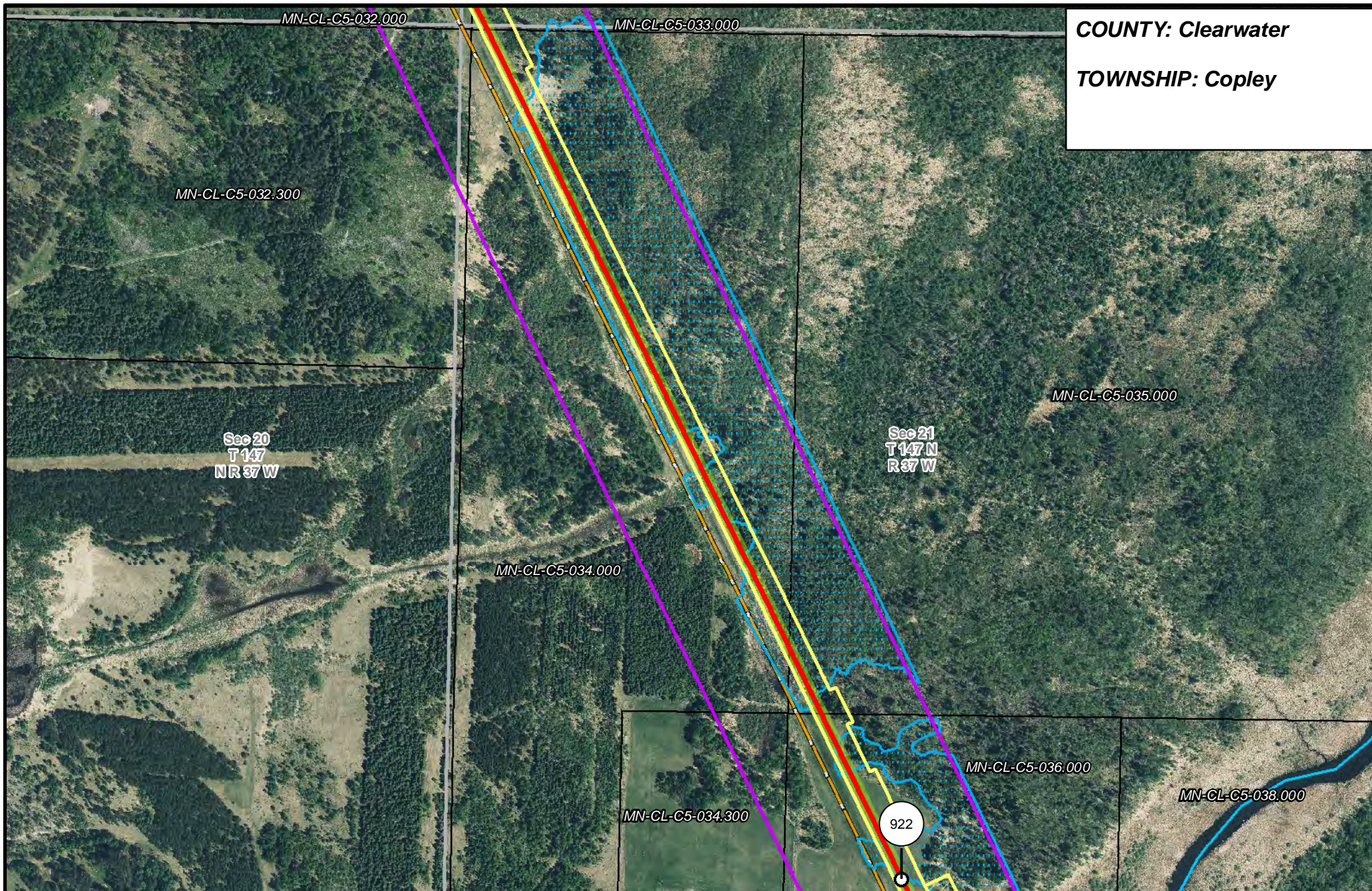
- PUC Designated Route
- ROW
- Line 3R Pipeline
- Valve Location
- Enbridge Pump Station
- Mile Post
- Temporary Workspace
- Additional Temporary Workspace
- Existing Enbridge Pipelines
- Existing Electric Transmission
- Existing Third Party Pipelines
- Surveyed Waterbodies
- ESA
- Surveyed Wetlands
- NWI Wetlands
- Tract Boundary
- MN Section Boundary
- Township/City Boundary
- County Boundary



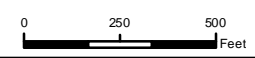
LINE 3 REPLACEMENT PIPELINE ROUTE

DRAWN: MLB CHECKED: --
DATE: August 31, 2018 SCALE: 1:5,000
Map 143 of 378

COUNTY: Clearwater
TOWNSHIP: Copley



- | | | | |
|-----------------------|--------------------------------|----------------------|------------------------|
| PUC Designated Route | Mile Post | Surveyed Waterbodies | Tract Boundary |
| ROW | Temporary Workspace | ESA | MN Section Boundary |
| Line 3R Pipeline | Additional Temporary Workspace | Surveyed Wetlands | Township/City Boundary |
| Valve Location | Existing Enbridge Pipelines | NWI Wetlands | County Boundary |
| Enbridge Pump Station | Existing Electric Transmission | | |
| | Existing Third Party Pipelines | | |

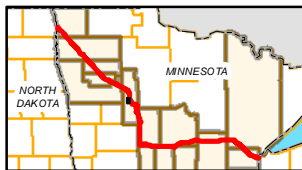
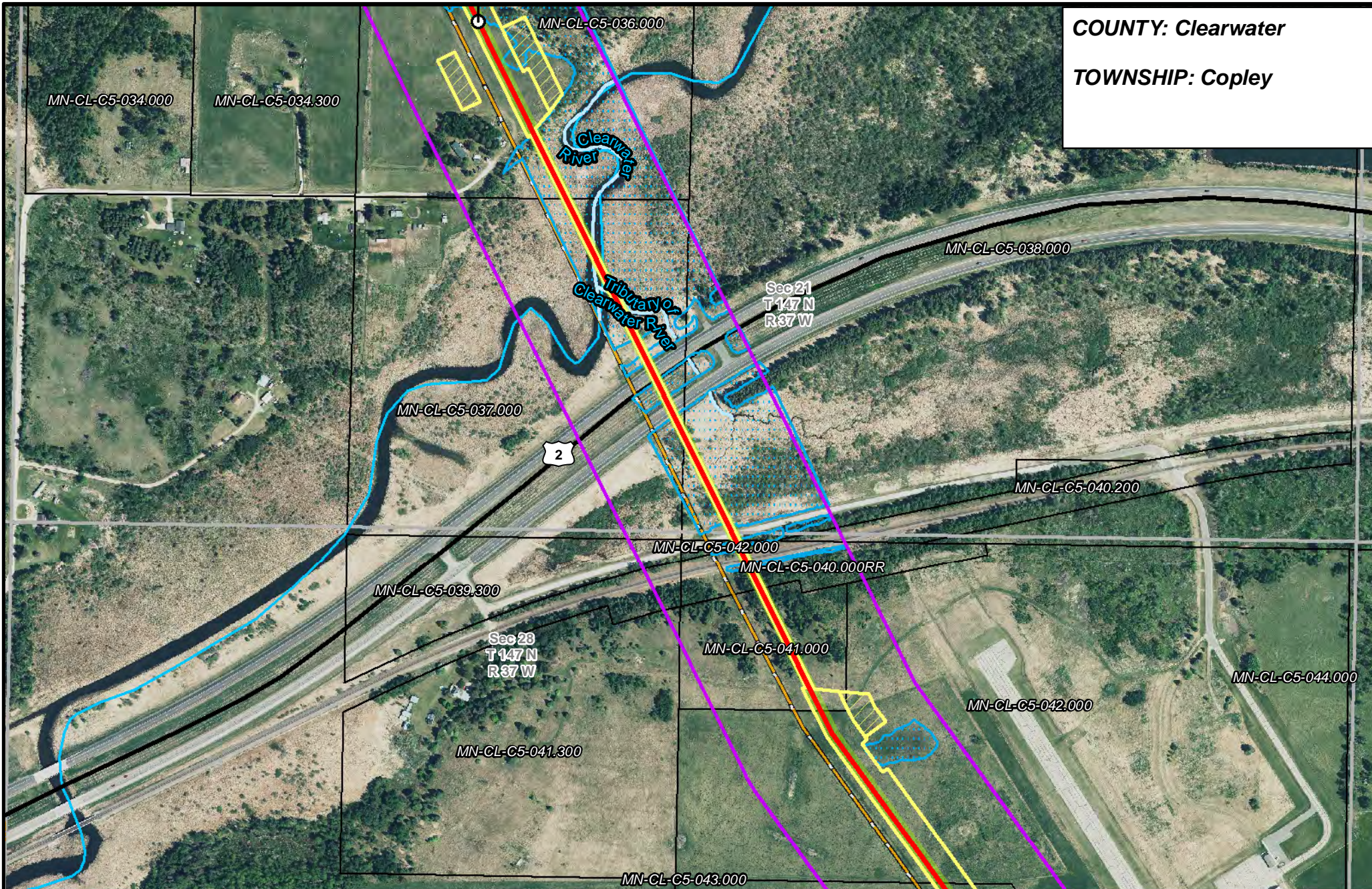


**LINE 3 REPLACEMENT
PIPELINE ROUTE**

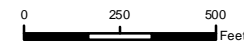
DRAWN: MLB CHECKED: --
DATE: August 31, 2018 SCALE: 1:5,000
Map 144 of 378

COUNTY: Clearwater

TOWNSHIP: Copley



- | | | | |
|-----------------------|--------------------------------|----------------------|------------------------|
| PUC Designated Route | Mile Post | Surveyed Waterbodies | Tract Boundary |
| ROW | Temporary Workspace | ESA | MN Section Boundary |
| Line 3R Pipeline | Additional Temporary Workspace | Surveyed Wetlands | Township/City Boundary |
| Valve Location | Existing Enbridge Pipelines | NWI Wetlands | County Boundary |
| Enbridge Pump Station | Existing Electric Transmission | | |
| | Existing Third Party Pipelines | | |



LINE 3 REPLACEMENT PIPELINE ROUTE

DRAWN: MLB CHECKED: ---
DATE: August 31, 2018 SCALE: 1:5,000
Map 145 of 378

MN-CL-C5-041.300

COUNTY: Clearwater

TOWNSHIP: Copley

MN-CL-C5-042.000

923

Sec 28
T 147 N
R 37 W

MN-CL-C5-043.000

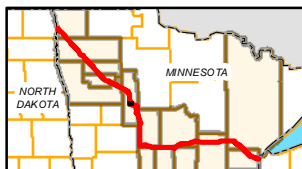
Sec 27
T 147
N R 37 W

MN-CL-C5-044.000

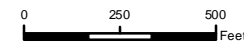
MN-CL-C5-043.300

MN-CL-C5-045.000-A

MN-CL-C5-045.000



- PUC Designated Route
- ROW
- Line 3R Pipeline
- Valve Location
- Enbridge Pump Station
- Mile Post
- Temporary Workspace
- Additional Temporary Workspace
- Existing Enbridge Pipelines
- Existing Electric Transmission
- Existing Third Party Pipelines
- Surveyed Waterbodies
- ESA
- Surveyed Wetlands
- NWI Wetlands
- Tract Boundary
- MN Section Boundary
- Township/City Boundary
- County Boundary

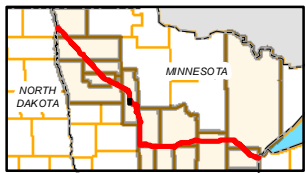
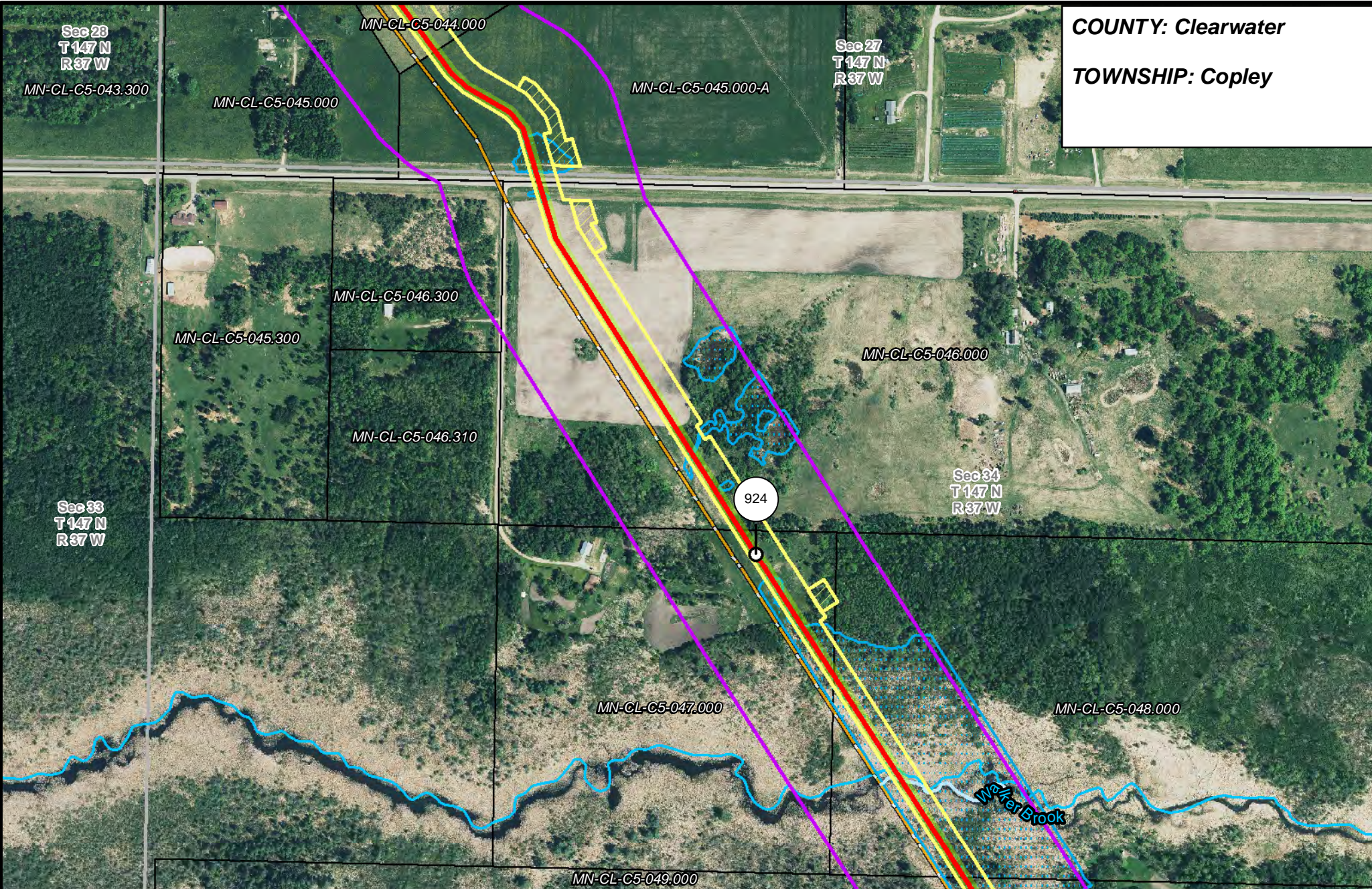


LINE 3 REPLACEMENT PIPELINE ROUTE

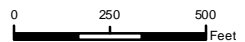
DRAWN: MLB CHECKED: --
 DATE: August 31, 2018 SCALE: 1:5,000
 Map 146 of 378

COUNTY: Clearwater

TOWNSHIP: Copley



- ▬ PUC Designated Route
- ▬ ROW
- ▬ Line 3R Pipeline
- ⊕ Valve Location
- Enbridge Pump Station
- Mile Post
- Temporary Workspace
- Additional Temporary Workspace
- Existing Enbridge Pipelines
- Existing Electric Transmission
- Existing Third Party Pipelines
- Surveyed Waterbodies
- ESA
- Surveyed Wetlands
- NWI Wetlands
- Tract Boundary
- MN Section Boundary
- Township/City Boundary
- County Boundary



LINE 3 REPLACEMENT PIPELINE ROUTE

DRAWN: MLB CHECKED: --
 DATE: August 31, 2018 SCALE: 1:5,000
 Map 147 of 378